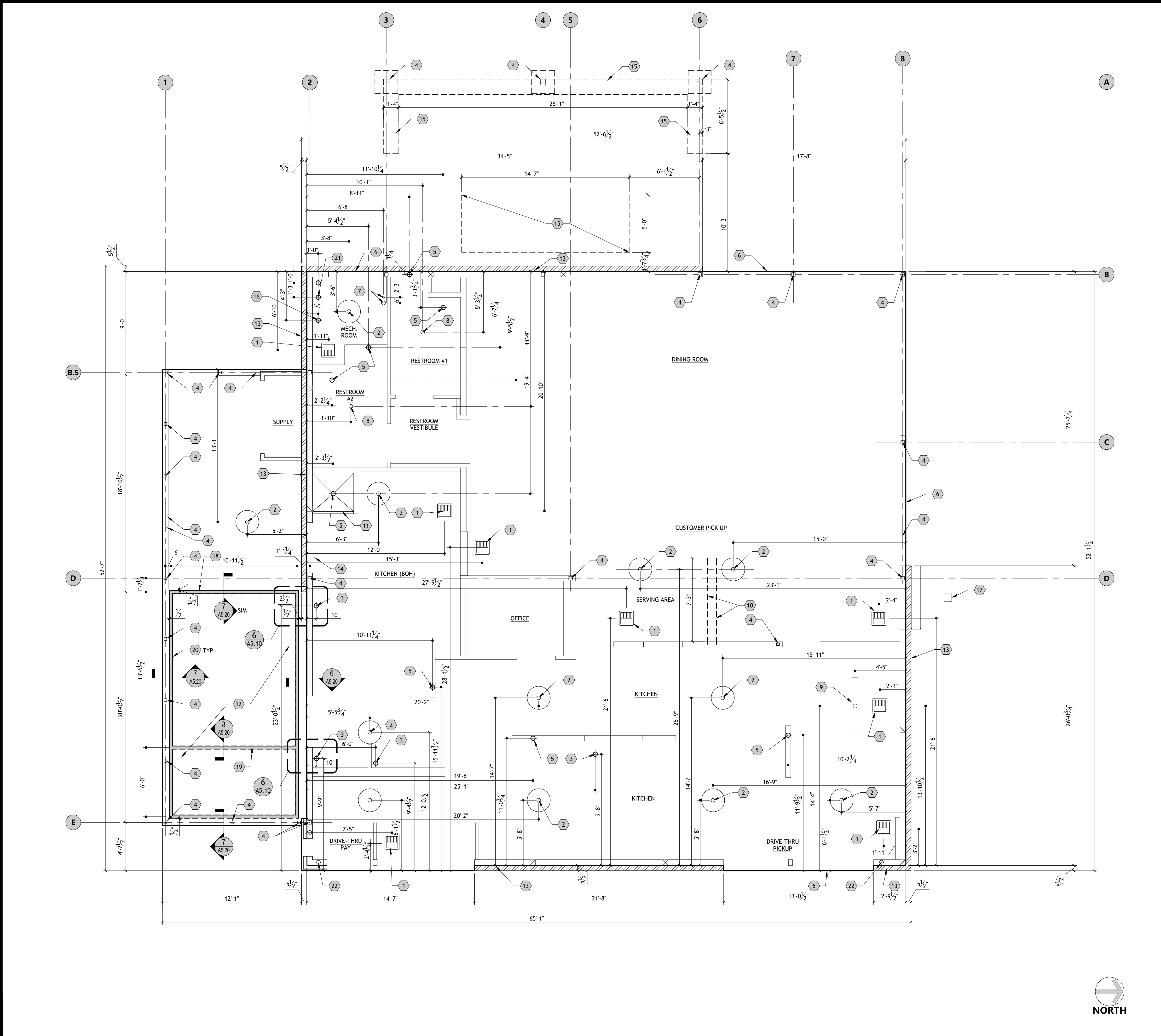


## SITE PLAN REVIEW







SLAB COORDINATION PLAN

SHEET NOTES

- A. REFER TO SHEET G0.01 FOR GENERAL NOTES.
- B. CONTRACTOR SHALL LOCATE SLAB CONTROL JOINTS IN THE FIELD AT 8'-0" O.C. MAX. COORDINATE WITH ALL DRAINS, RECESSES, SLOPES, CURBS, ETC.
- C. VERIFY & COORDINATE LOCATION OF FLOOR SINKS & FLOOR DRAINS W/EQUIPMENT SUPPLIERS ROUGH-IN DRAWINGS.
- D. ALL CONCRETE SHALL BE 3000 PSI NORMAL WT CONCRETE OR GREATER AS SPECIFIED ON THE FOUNDATION PLAN AND GEO REPORT. NO FLY ASH IS TO BE USED, IF FLY ASH IS REQUIRED BY LOCAL MUNICIPALITY, FLY ASH SHALL BE USED IN ADDITION TO REQUIRED STRENGTH.
- E. BY ALL MEANS POSSIBLE, WATER SHALL BE PREVENTED FROM STANDING WITHIN 10 FEET OF THIS SLAB.
- F. PREPARE BUILDING PAD PER GEOTECHNICAL REPORT RECOMMENDATIONS OR STRUCTURAL ENGINEER'S DRAWINGS, WHICHEVER IS THE GREATER. A COPY OF THE REPORT MAY BE OBTAINED FROM THE ARCHITECT. SEE SPECIAL SITE PREPARATIONS IN THE STRUCTURAL DRAWINGS.
- G. ALL DIMENSIONS OF FLOOR DRAINS, FLOOR SINKS, HUB DRAINS, ETC ARE TO THE CENTERLINE AND ARE TAKEN FROM THE EDGE OF SLAB, NOT BRICK LEDGE.
- H. FLOOR DRAINS SHALL BE SET 1/4" BELOW FINISH FLOOR U.N.O., SLOPE TO DRAIN 1/4" PER FOOT MAX.

KEYED NOTES

- 1. FLOOR SINK, RE: PLUMBING
- 2. FLOOR DRAIN, RE: PLUMBING
- 3. HUB DRAIN, RE: PLUMBING
- 4. COLUMN OR POST, RE: STRUCTURAL
- 5. PLUMBING FIXTURE DRAIN ROUGH-IN
- 6. DOWEL CONNECTION TO SIDEWALK PAVING AT ENTRY
- 7. DATA AND PHONE STUB-UPS
- 8. FLOOR DRAIN TO BE FLUSH WITH FINISH FLOOR TILE
- 9. TRENCH DRAIN, RE: PLUMBING
- 10. ROUTE CONDUITS FOR REGISTERS UNDER SLAB, RE: ELECTRICAL
- 11. EDGE OF MOP SINK SLOPE 1:3, RE: 10/A5.30
- 12. INSULATED COOLER / FREEZER SLAB
- 13. BRICK LEDGE
- 14. NOT USED
- 15. THICKENED SLAB FOR FURNITURE ANCHORING
- 16. WATER RISER, RE: PLUMBING
- 17. SQUARE UPLIGHT RECESSED INTO PAVING, RE: ELECTRICAL
- 18. 2x PRESSURE TREATED WOOD BLOCKING
- 19. 2x PRESSURE TREATED WOOD BLOCKING THERMAL BREAK
- 20. DASHED LINE INDICATES COOLER PANEL
- 21. FIRE RISER
- 22. PRIMARY STORM DRAIN

LEGEND

KEY	DESCRIPTION
	BRICK LEDGE

CSRS

8555 United Plaza Blvd.  
Baton Rouge, Louisiana 70809  
Telephone: 225 769-0546  
www.csrsinc.com

SEAL:

FOR INTERNAL  
REVIEW ONLY.  
NOT FOR  
DISTRIBUTION

CONSULTANT:



RAISING CANE'S  
RESTAURANT NO.: #1507  
(I-30 & REYNOLDS)  
BRYANT, AR 72022

PROTOTYPE PG-AV  
SCHEME A of B  
VERSION 2025-1.0

REV	DATE	DESCRIPTION

DRAWN BY: X  
CHECKED BY: XX  
ARCH. PROJECT NO.: 225000.01.507  
SHEET NAME: SLAB COORDINATION PLAN  
SHEET NUMBER: A1.30

SITE PLAN REVIEW








$$1/4'' = 1'-0''$$

1

**CSRS**  
8555 United Plaza Blvd.  
Baton Rouge, Louisiana 70809  
Telephone: 225 769-0546  
[www.csrsinc.com](http://www.csrsinc.com)

**FOR INTERNAL  
REVIEW ONLY.  
NOT FOR  
DISTRIBUTION**

■ **CONSULTANT:**

5 1/2'

26'-7 3/4'

12'-7 1/4'

2'-8 3/4'

7'-2"

B

E

REFER TO TRUSS  
DRAWINGS FOR  
L TRUSS BRIDGING

**NOTE: REFER TO TRUSS  
SHOPS DRAWINGS FOR  
ACTUAL TRUSS BRIDGING**

**RAISING CANE'S**  
RESTAURANT NO.: #1507  
(1-30 & REYNOLDS)  
BRYANT, AR 72022

[illegible]

DRAWN BY: X  
CHECKED BY: XX

ARCH. PROJECT NO.: 225000.01.507

SHEET NAME: TRUSS  
COORDINATION  
PLAN

SHEET NUMBER:

# A1.50

## **SITE PLAN REVIEW**



---

# SITE PLAN REVIEW





- A. REFER TO SHEET G0.01 FOR GENERAL NOTES.
- B. REFER TO SHEET A6.30 FOR FINISH SCHEDULES.
- C. SIGNAGE TO BE APPROVED UNDER SEPARATE PERMIT.
- D. AWINGS ARE REQUESTED AS DEFERRED SUBMITTALS AS INDICATED ON SHEET G0.00. G.C. TO SUBMIT AWINGS USING MANUFACTURER SPECIFICATIONS AND SHOP DRAWINGS FOR APPROVAL
- E. CONFIRM OUTDOOR SPEAKERS, CAMERAS AND WI-FI LOCATIONS WITH I.T.
- F. VERIFY LOGO SIGNS, PAINTED MURAL, ARTWORK W/ SIGNAGE VENDOR.

- A. PROVIDE SEALANT & BACKER RODS AT ALL DISSIMILAR MATERIALS.
- B. MATCH FRAME COLOR AT ALL DOORS AND WINDOWS. MATCH ADJACENT WALL MATERIAL COLOR AT WALL PENETRATIONS AND CONSTRUCTION JOINTS; AT JOINT BETWEEN TWO DIFFERENT WALL MATERIALS, MATCH DARKER MATERIAL.

1. SIGN, BY OWNER. PROVIDE BLOCKING AS REQUIRED (4'-0" x 8'-0" OVAL).
2. LED COVE LIGHTING BY OTHERS
3. WALL ART BY OWNER
4. MESH PARAPET ASSEMBLY BY OWNER
5. METAL PANELS BY OWNER
6. METAL COUNTER FLASHING AT SLOPED ROOF
7. CANOPY, RE: RCP
8. ADDRESS NUMBERS IN 6" CHARACTERS, SIZE AND LOCATION AS REQUIRED BY AHJ
9. METAL, GUTTER & DOWNSPOUT, FINISH AS NOTED, RE: CIVIL FOR CONTINUATION.
10. BREAK METAL SILL
11. ELECTRICAL EQUIPMENT, PAINT TO MATCH ADJACENT CLADDING MATERIAL
12. ROOFTOP EQUIPMENT BEHIND SCREEN, REFER TO ROOF PLAN.
13. GAS METER - PAINTED TO MATCH ADJACENT CLADDING MATERIAL
14. BRAKE METAL BETWEEN WINDOWS PRE-FINISHED TO MATCH STOREFRONT
15. EXTERIOR SPEAKERS
16. OVERFLOW DRAIN DOWNSPOUT COVER, RE: PLUMBING
17. 4" BOLLARD W/ BLACK PLASTIC SLEEVE RE: 2/A0.50
18. 2x WOOD BLOCKING REQUIRED IN WALL CAVITY. REFER TO WALL SECTIONS
19. DARPRO OUTLET AND SECURITY BOX
20. ORIA 4-DIGIT KEY STORAGE BOX
21. CO2 PORT
22. PENETRATION FOR SECURITY CAMERAS
23. PENETRATION FOR WIFI EQUIPMENT
24. KNOX BOX - COORDINATE LOCATION WITH FIRE MARSHAL
25. 8" ACCENT BAND, 1" PROJECTION, ALIGN TOP OF BAND WITH LOWER PARAPET
26. WALL HYDRANT, RE: PLUMBING
27. 1" x 1" 14 ga BLACK WIRE MESH INFILL
28. PRIMARY DRAIN RAIN LEADER CLEAN-OUT
29. EXPO CANOPY, RE: SHEET A0.41
30. BLANK PLATE INSTALLED ON EXTERIOR SIDE OF GLASS TO HIDE SIGNAGE
31. NOT USED
32. FDC

## MATERIAL LEGEND

TAG	DESCRIPTION
EM-1	STANDING SEAM METAL ROOF / METAL FASCIA
EM-2	METAL CAP FLASHING
EM-3	POWDER COATED ALUMINUM
EM-4	METAL ACCENT PANELS
EWf-1	BRICK CLADDING
EWf-2	BRICK CLADDING
EWf-3	ARCHITECTURAL PANELS
EWf-4	COMPOSITE LUMBER
EWs-1	DRIVE-THRU WINDOW
EWs-2	ALUMINUM STOREFRONT
EWs-3	ALUMINUM SLIDING DOOR
P-5	EXTERIOR PAINT
P-10	EXTERIOR PAINT

**CSRS**  
8555 United Plaza Blvd.  
Baton Rouge, Louisiana 70809  
Telephone: 225 769-0546  
[www.csrsinc.com](http://www.csrsinc.com)

■ **SEAL:**

**FOR INTERNAL  
REVIEW ONLY.  
NOT FOR  
DISTRIBUTION**

■ **CONSULTANT:**

PROTOTYPE P6-AV  
SCHEME A or B  
VERSION 2025-1.0

**RAISING CANE'S**  
**RESTAURANT NO.: #1507**

(I-30 & REYNOLDS)  
BRYANT, AR 72022

[illegible]

DRAWN BY: MC  
CHECKED BY: CJ

ARCH. PROJECT NO.: 225000.01.507

SHEET NAME:

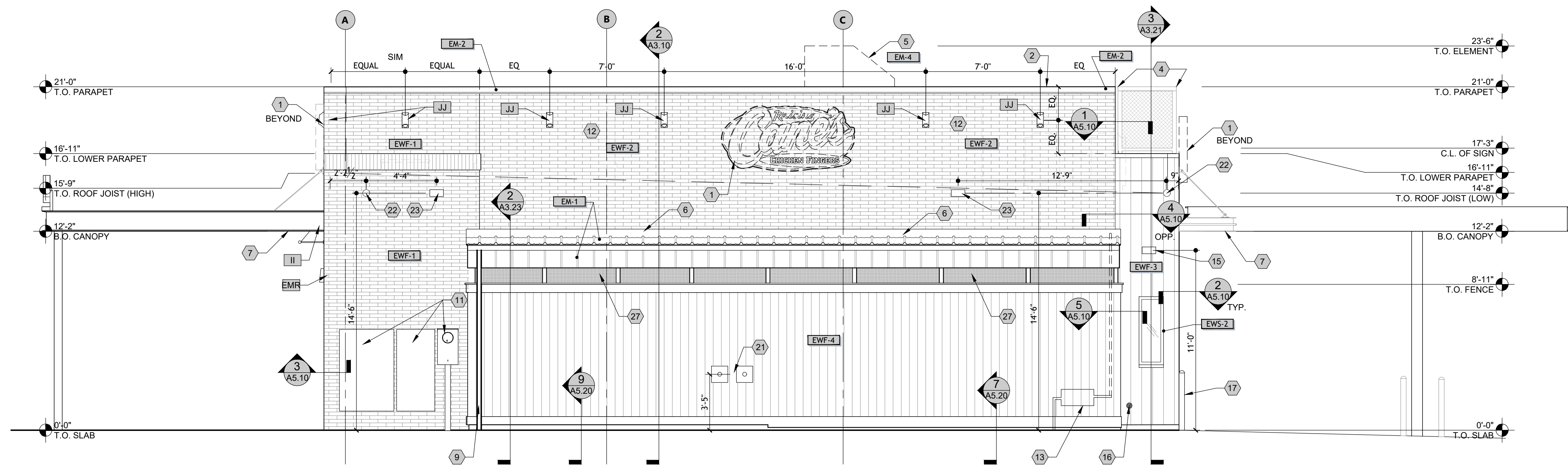
## EXTERIOR ELEVATIONS

**SHEET NUMBER:**

## A2.10

## SITE PLAN REVIEW

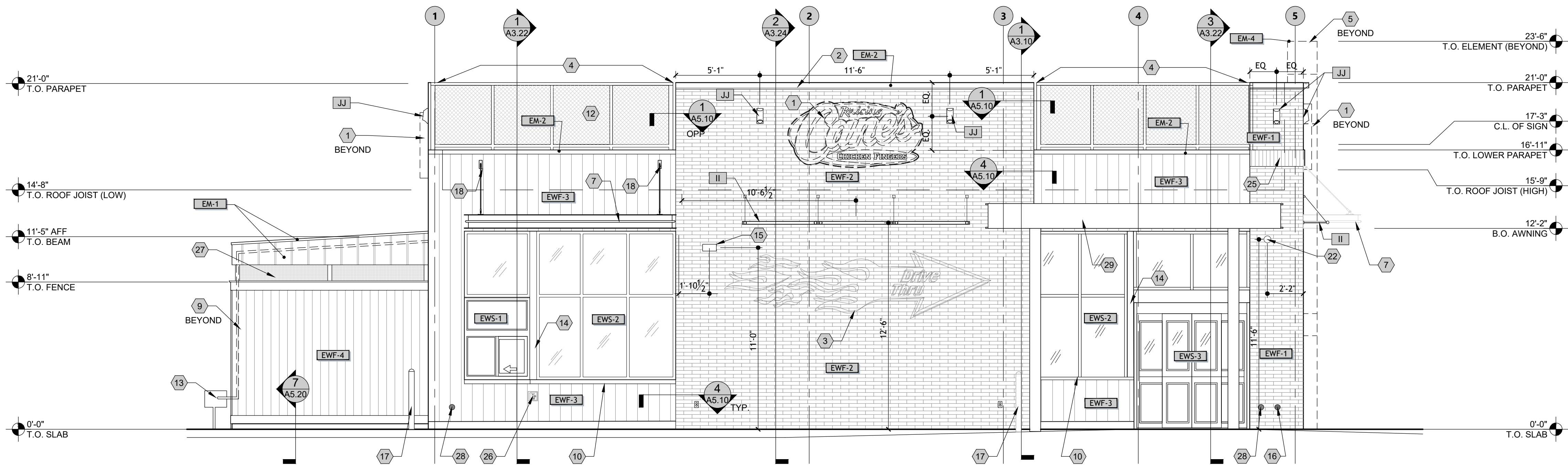




### REAR ELEVATION (NORTH)

---

1/4" = 1'-0"



### DRIVE-THRU ELEVATION (WEST)

---

1/4" = 1'-0"

## SHEET NOTES

- A. REFER TO SHEET G0.01 FOR GENERAL NOTES.
- B. REFER TO SHEET A6.30 FOR FINISH SCHEDULES.
- C. SIGNAGE TO BE APPROVED UNDER SEPARATE PERMIT.
- D. AWNINGS ARE REQUESTED AS DEFERRED SUBMITTALS AS INDICATED ON SHEET G0.00. G.C. TO PROVIDE AWNINGS USING MANUFACTURER SPECIFICATIONS AND SHOP DRAWINGS FOR APPROVAL.
- E. CONFIRM OUTDOOR SPEAKERS, CAMERAS AND WI-FI LOCATIONS WITH I.T.
- F. VERIFY LOG SIGNS, PAINTED MURAL, ARTWORK W/ SIGNAGE VENDOR.

## SEALANT NOTES

- A. PROVIDE SEALANT & BACKER RODS AT ALL DISSIMILAR MATERIALS.
- B. MATCH FRAME COLOR AT ALL DOORS AND WINDOWS. MATCH ADJACENT WALL MATERIAL COLOR AT WALL PENETRATIONS AND CONSTRUCTION JOINTS; AT JOINT BETWEEN TWO DIFFERENT WALL MATERIALS, MATCH DARKER MATERIAL.

## KEYED NOTES

1. SIGN, BY OWNER. PROVIDE BLOCKING AS REQUIRED (4'-0" x 8'-0" OVAL).
2. LED COVE LIGHTING BY OTHERS
3. WALL ART BY OWNER
4. MESH PARAPET ASSEMBLY BY OWNER
5. METAL PANELS BY OWNER
6. METAL COUNTER FLASHING AT SLOPED ROOF
7. CANOPY, RE: RCP
8. ADDRESS NUMBERS IN 6" CHARACTERS, SIZE AND LOCATION AS REQUIRED BY AHJ
9. METAL, GUTTER & DOWNSPOUT, FINISH AS NOTED, RE: CIVIL FOR CONTINUATION.
10. BREAK METAL SILL
11. ELECTRICAL EQUIPMENT, PAINT TO MATCH ADJACENT CLADDING MATERIAL
12. ROOFTOP EQUIPMENT BEHIND SCREEN, REFER TO ROOF PLAN.
13. GAS METER - PAINTED TO MATCH ADJACENT CLADDING MATERIAL
14. BRAKE METAL BETWEEN WINDOWS PRE-FINISHED TO MATCH STOREFRONT
15. EXTERIOR SPEAKERS
16. OVERFLOW DRAIN DOWNSPOUT COVER, RE: PLUMBING
17. 4" BOLLARD W/ BLACK PLASTIC SLEEVE RE: 2/A0.50
18. 2x WOOD BLOCKING REQUIRED IN WALL CAVITY. REFER TO WALL SECTIONS
19. DARPRO OUTLET AND SECURITY BOX
20. ORIA 4-DIGIT KEY STORAGE BOX
21. CO2 PORT
22. PENETRATION FOR SECURITY CAMERAS
23. PENETRATION FOR WIFI EQUIPMENT
24. KNOX BOX - COORDINATE LOCATION WITH FIRE MARSHAL
25. 8" ACCENT BAND, 1" PROJECTION, ALIGN TOP OF BAND WITH LOWER PARAPET
26. WALL HYDRANT, RE: PLUMBING
27. 1" x 1" 14 ga BLACK WIRE MESH INFILL
28. PRIMARY DRAIN RAIN LEADER CLEAN-OUT
29. EXPO CANOPY, RE: SHEET A0.41
30. BLANK PLATE INSTALLED ON EXTERIOR SIDE OF GLASS TO HIDE SIGNAGE
31. NOT USED
32. FDC

## MATERIAL LEGEND

TAG	DESCRIPTION
EM-1	STANDING SEAM METAL ROOF/ METAL FASCIA
EM-2	METAL CAP FLASHING
EM-3	POWDER COATED ALUMINUM
EM-4	METAL ACCENT PANELS
EWf-1	BRICK CLADDING
EWf-2	BRICK CLADDING
EWf-3	ARCHITECTURAL PANELS
EWf-4	COMPOSITE LUMBER
EWS-1	DRIVE-THRU WINDOW
EWS-2	ALUMINUM STOREFRONT
EWS-3	ALUMINUM SLIDING DOOR
P-5	EXTERIOR PAINT
P-10	EXTERIOR PAINT

**CSRS**  
8555 United Plaza Blvd.  
Baton Rouge, Louisiana 70809  
Telephone: 225 769-0546  
[www.csrsinc.com](http://www.csrsinc.com)

**FOR INTERNAL  
REVIEW ONLY.  
NOT FOR  
DISTRIBUTION**

**CONSULTANT:**



PROTOTYPE P6-AV  
SCHEME A or B  
VERSION 2025-1.0

**RAISING CANE'S**  
RESTAURANT NO.: #1507

(I-30 & REYNOLDS)  
BRYANT, AR 72022

[illegible]

DRAWN BY: MC  
CHECKED BY: CJ

ARCH. PROJECT NO.: 225000.01.507

SHEET NAME:

## EXTERIOR ELEVATIONS

**SHEET NUMBER**

## A2.11

## SITE PLAN REVIEW