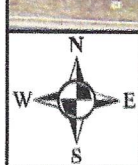
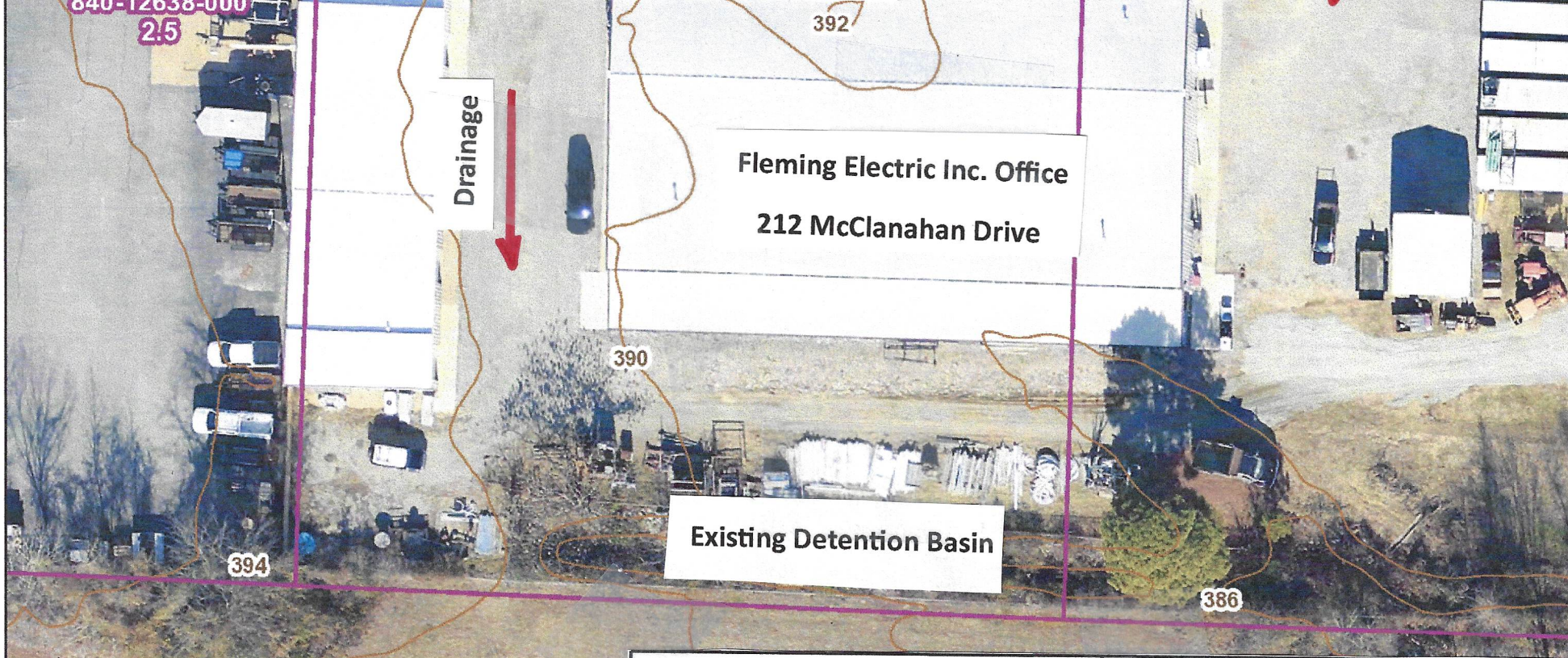
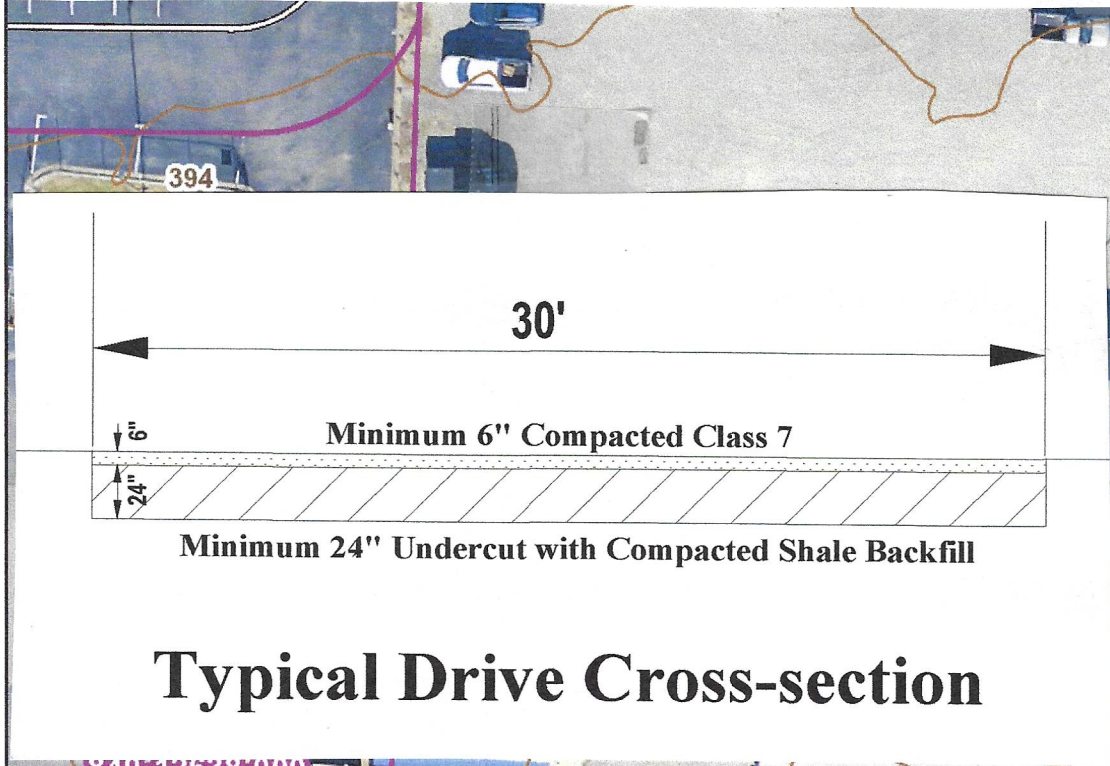


Note: Existing storm water detention is provided by the existing storm water basin located south of office building.



County Disclaimer: This map was created by the Saline County Assessor's office in accordance with Arkansas Code 15-21-502 (2) (B), which states, "The digital cadastral map and associated information... does not represent legal property boundaries nor is it suitable for boundary determination of the individual parcels included in the map." Code 15-21-502 (6) indicates that "Digital cadastral" means the storage and computerized representations of parcel maps and linked data bases. The parcel map is considered a graphical representation of the actual boundaries. The Assessor's office is not responsible for or liable for any misrepresentation or re-use of this map.

HURRICANE VALLEY INC. <i>Professional Engineering Consultants</i>		Fleming Electric Inc. West Entrance Drive 212 McClanahan Bryant, Arkansas	
P.O. Box 118 Bryant, Arkansas	501-231-5136		
HVI Job No. 16141	SCALE: N.T.S.	Date: 4-10-25	2/2