

SPECIFICATIONS

Notes:

- 1. 6" plain end inlet/outlet
- 2. Unit weight - w/ cast iron covers: 824 lbs. (for wet weight add 8,413 lbs.)
- 3. Maximum operating temperature: 150° F continuous
- 4. Capacities - Liquid: 1,000 gal.;  
Grease: 5,495 lbs. (753 gal.) @100GPM  
Grease: 4,959 lbs (679 gal.) @200GPM  
Solids: 211 gal.
- 5. Satisfies Miami DERM 99% efficiency requirements; retaining the following capacities at 99.0% efficiency:  
5,272 lbs. (722 gal.) @100GPM  
3,127 lbs. (428 gal.) @200GPM
- 6. For gravity drainage applications only.
- 7. Do not use for pressure applications.
- 8. Cover placement allows full access to tank for proper maintenance.
- 9. Vent not required unless per local code.
- 10. Engineered inlet and outlet diffusers with inspection ports are removable to inspect / clean piping.
- 11. Integral air relief / Anti-siphon / Sampling access.
- 12. Adjustable cover adapters provide up to 4" of additional height.
- 13. Designed for below-grade, above-grade, indoor or outdoor installations.
- 14. Safety Star®, access restrictor built into each cover adapter, prevents accidental entry to tanks (450 lb rating).

ENGINEER SPECIFICATION GUIDE

Schier Great Basin™ grease interceptor model # GB-1000 shall be lifetime guaranteed and made in USA of seamless, molded polyethylene with minimum 7/16" uniform wall thickness. Interceptor shall be furnished for above or below-grade installation with adjustable cover adapter and Safety Star® access restrictor built into each cover adapter. Interceptor shall be certified to ASME A112.14.3 (Type D) and CSA B481.1 as well as certified to IAPMO/ANSI Z1001-2021. Interceptor flow rate shall be 100 GPM or 200GPM. Interceptor grease capacity shall be 5,495 lbs. Cover shall provide water/gas-tight seal and have minimum 16,000 lbs. load capacity.

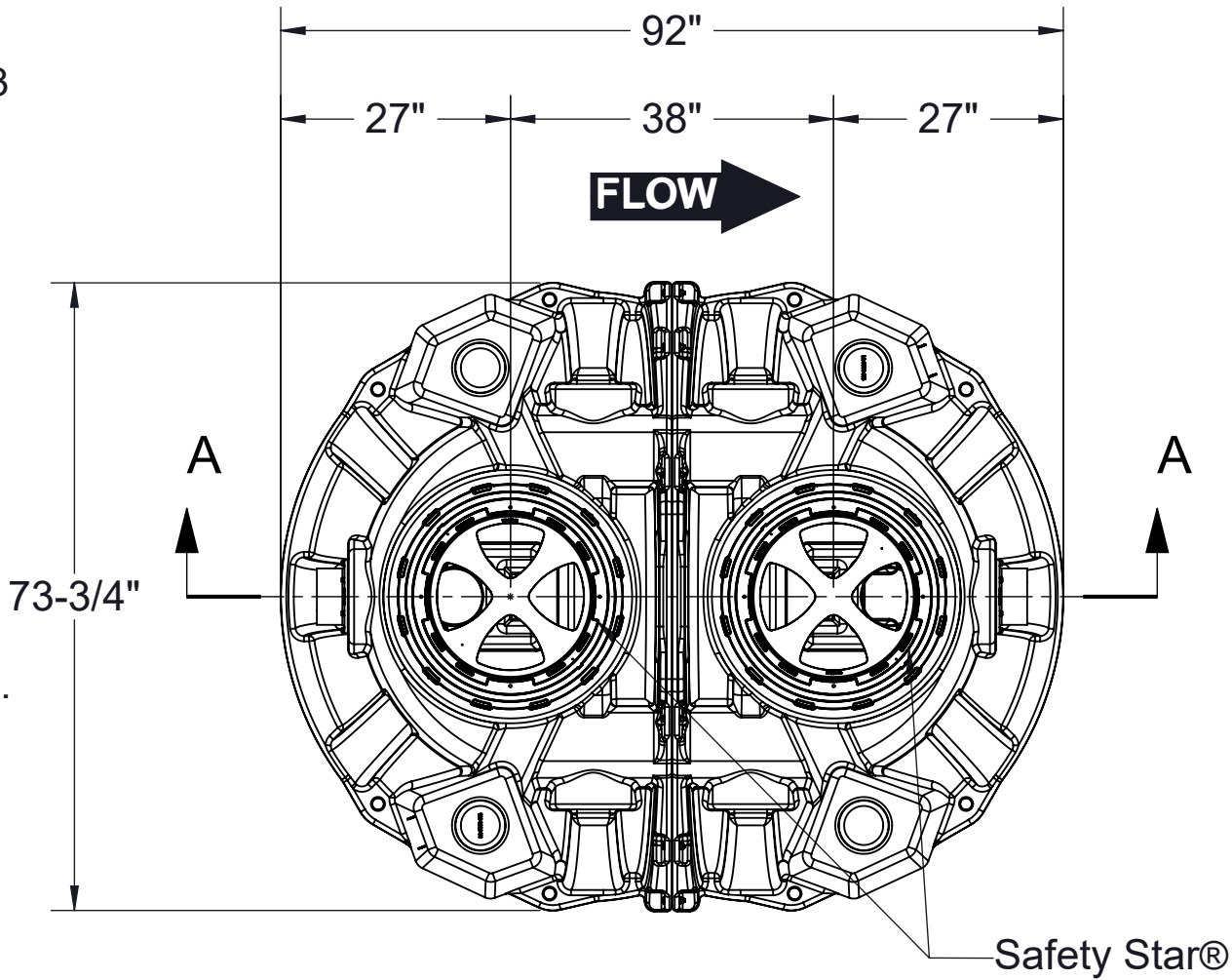
CERTIFIED PERFORMANCE

Great Basin™ hydromechanical grease interceptors are third party performance-tested and listed by IAPMO to ASME #A112.14.3 and CSA B481.1 grease interceptor standards and greatly exceed requirements for grease separation and storage. They are compliant to the Uniform Plumbing Code and the International Plumbing Code.

Type D certification does not require a flow control



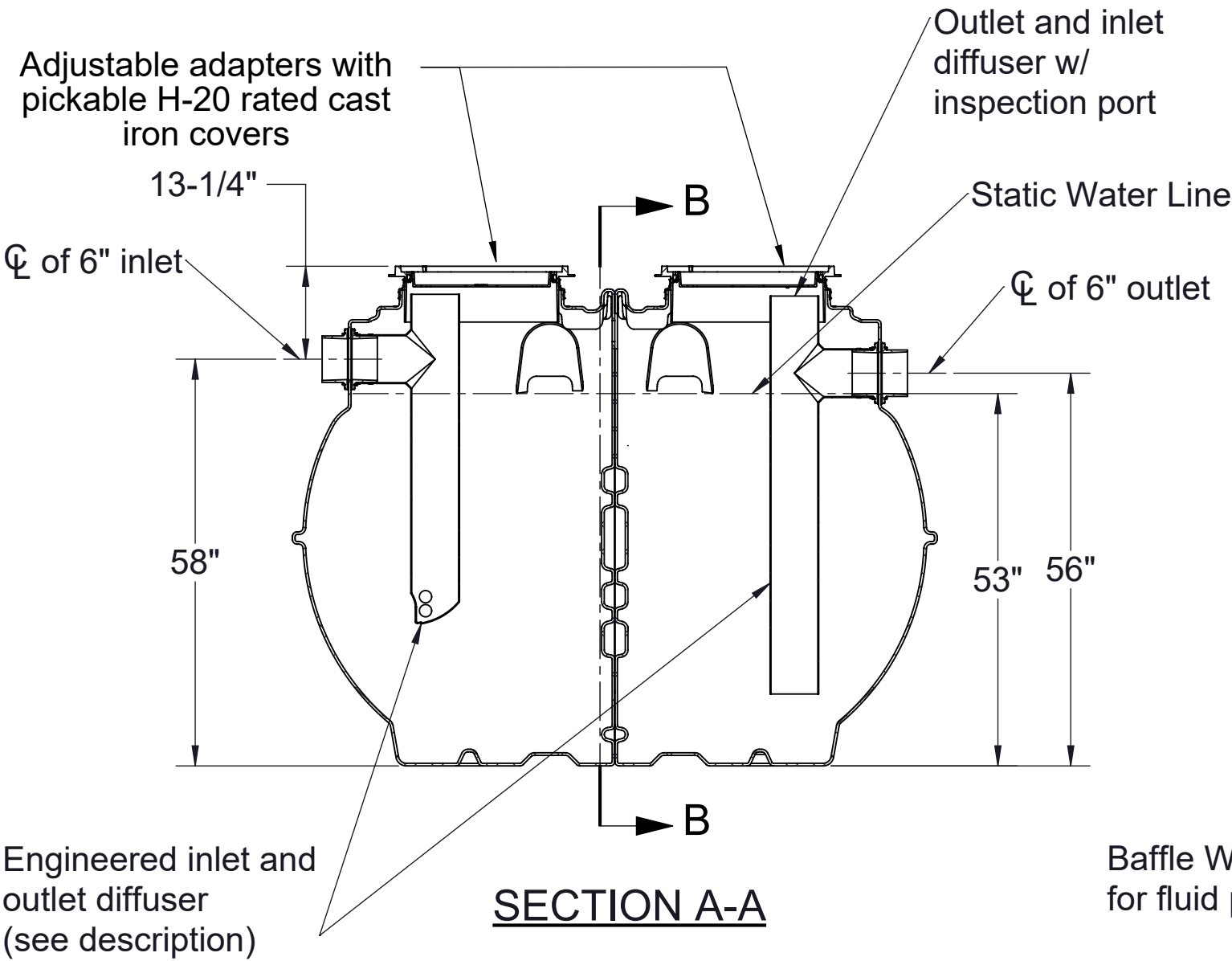
Satisfies Miami DERM 99% efficiency requirements. Product labels are permanently attached to inside and outside of unit for easy viewing.



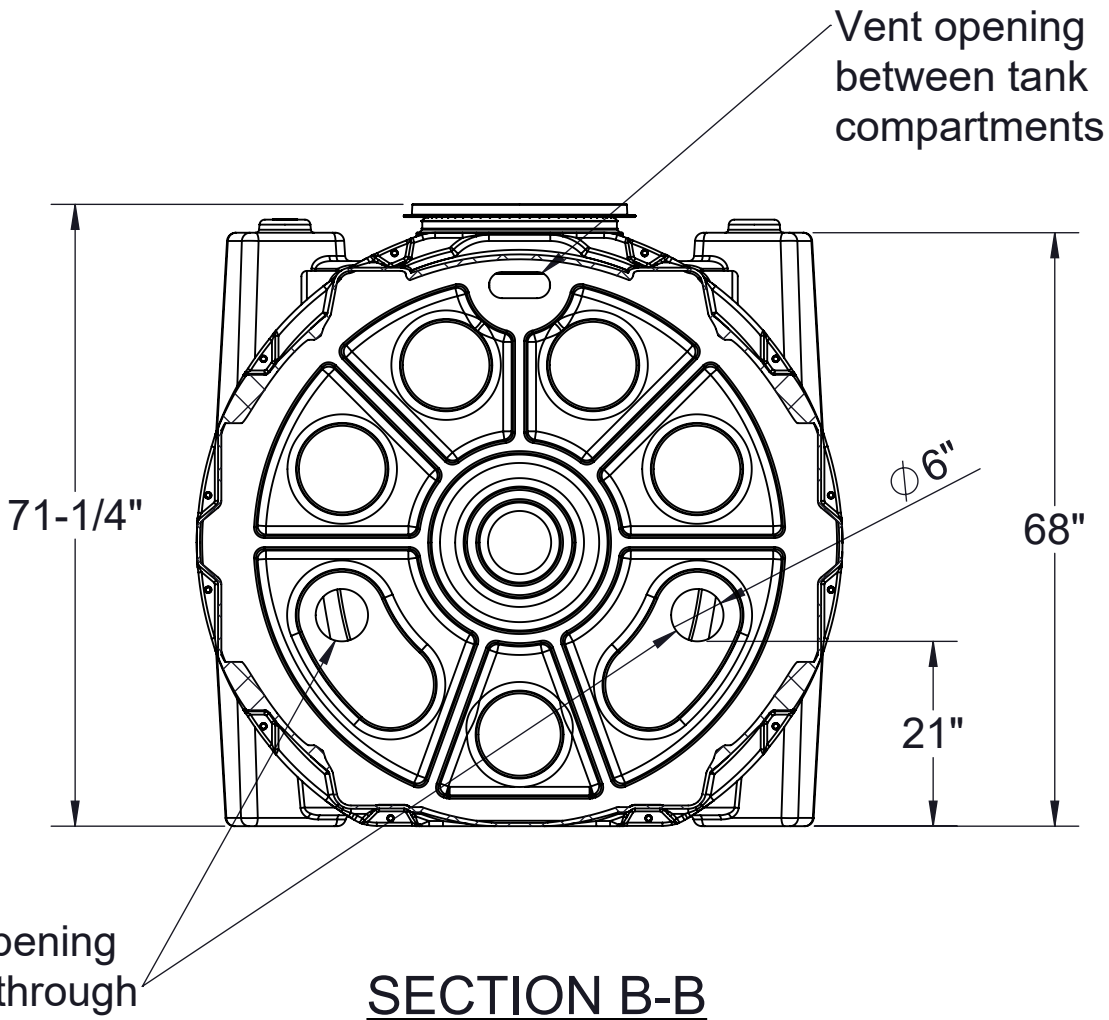
TOP VIEW  
(COVERS REMOVED FOR CLARITY)



ISOMETRIC VIEW



SECTION A-A



SECTION B-B

SPECIFICATION SHEET

MODEL NUMBER:

GB-1000

PROPRIETARY AND CONFIDENTIAL

THE INFORMATION CONTAINED IN THIS DRAWING IS THE SOLE PROPERTY OF SCHIER PRODUCTS. ANY REPRODUCTION IN PART OR AS A WHOLE WITHOUT THE WRITTEN PERMISSION OF SCHIER PRODUCTS IS PROHIBITED.

PART NUMBER:

4080-002-01

DESCRIPTION:

GB-1000 GREASE INTERCEPTOR 100 GPM/ 200 GPM  
6" INLET/OUTLET, H-20 RATED CAST IRON COVER

DWG BY:

B.BROWN

DATE:

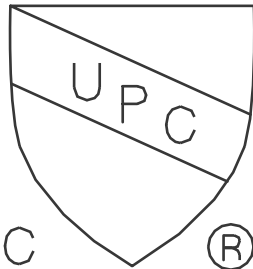
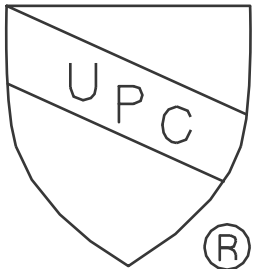
10/18/2021

REV:

02

ECO:

032822TA



SCHIER

6455 Woodland Dr  
Shawnee, KS 66218  
Tel: 913-951-3300  
Fax: 913-951-3399  
schierproducts.com



© 2025 bDot Architecture, Inc.  
Drawings, design concepts, and written materials shall not be used or reproduced in whole or part in any form or format without prior written consent of bDot Architecture, Inc.

All discrepancies in the construction drawings and / or specifications not brought to the architect's attention during the bid or pricing phase of the project shall become subject to the interpretation of the architect during the construction process and will not be grounds for a change order of any kind.



REVISIONS:

---

---

---

---

---

---

DATE:

01/17/2025

---

PROJECT NUMBER:

2421

---

SHEET NAME :

DUMPSTER ENCLOSURE  
ELEVATIONS, PLAN, AND  
DETAILS

SHEET NUMBER :

### A3.3