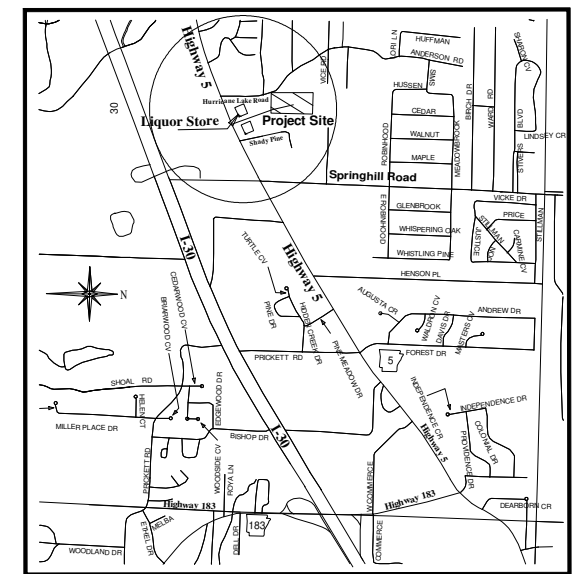
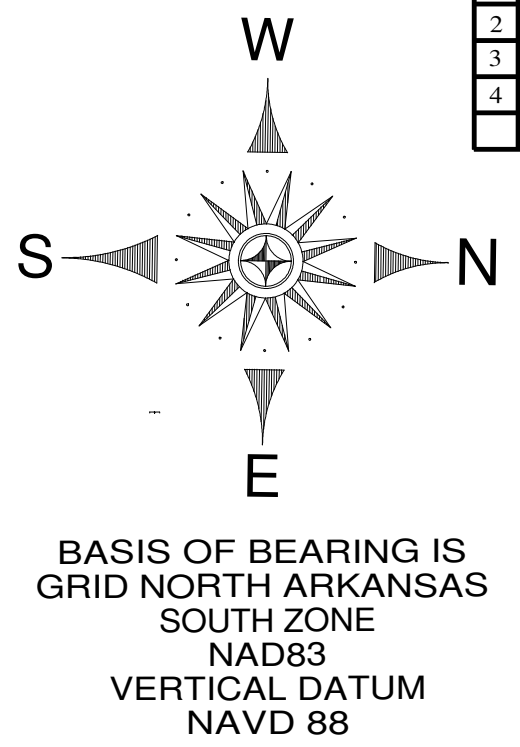
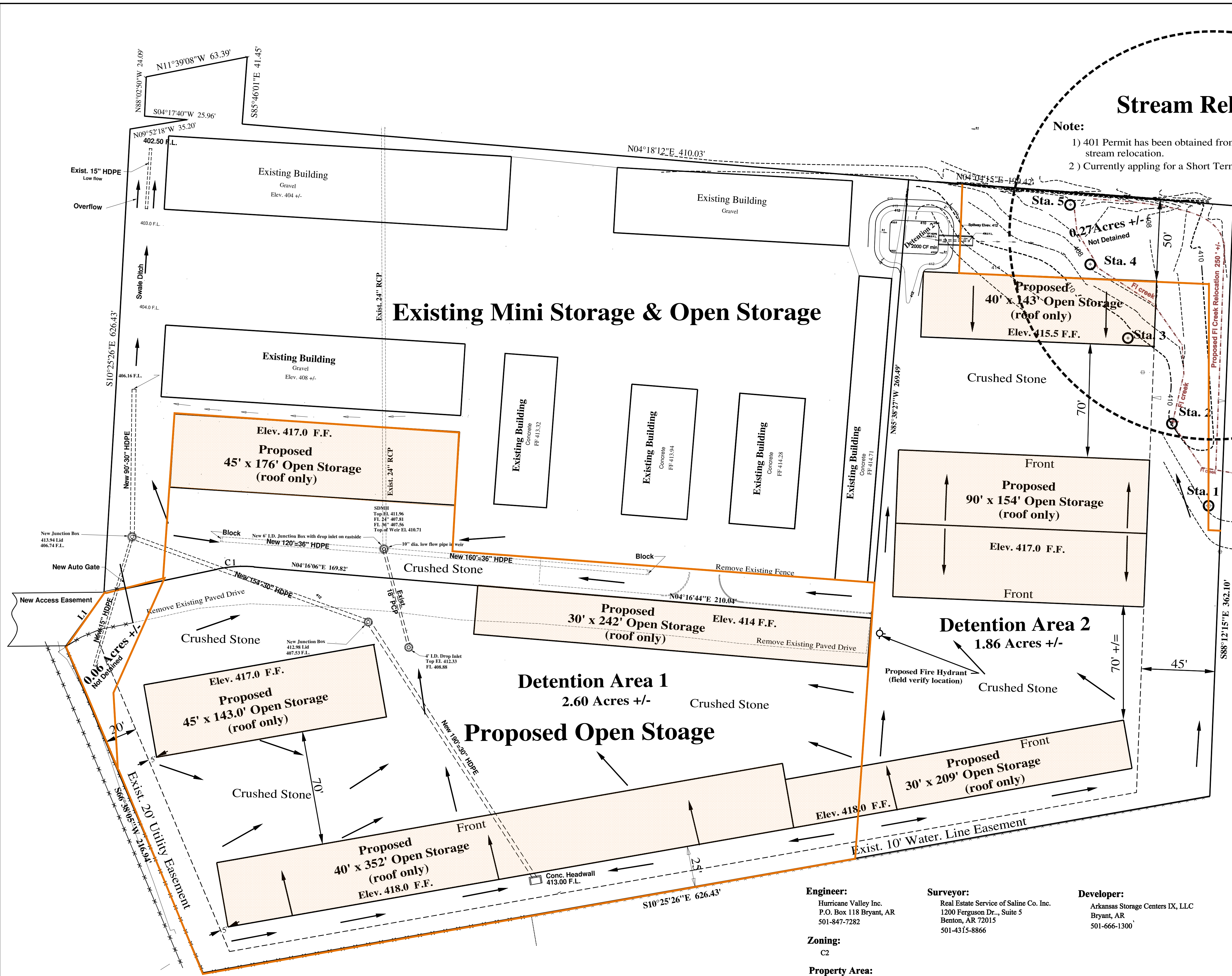


REVISED ON	BY	REASON
1	12-10-21	CB
2	12-14-21	CB
3	3-2-22	CB
4	3-3-22	CB



Stream Relocation

- Note:**
- 1) 401 Permit has been obtained from the COE in Vickburg for stream relocation.
 - 2) Currently applying for a Short Term Activity Authorization from ADEQ.



Sta. 1	34°37'02.71"	92°31'11.32"
Sta. 2	34°37'02.49"	92°31'11.89"
Sta. 3	34°37'02.21"	92°31'12.52"
Sta. 4	34°37'01.98"	92°31'13.06"
Sta. 5	34°37'01.85"	92°31'13.49"

Legal Description.

That portion of the SE1/4 of SE1/4, Section 20, T-1-S, R-14-W, Saline County, Arkansas, described as beginning at the NW corner of said SE1/4 of SE1/4, run thence N 87°16'02" W, along the north line thereof a distance of 284.76 feet; thence N 09°52'18" W, a distance of 35.20 feet; thence S 04°17'40" W, a distance of 25.96 feet; thence N 88°02'50" W, a distance of 24.09 feet; thence N 11°39'08" W, a distance of 63.39 feet; thence S 85°46'01" E, a distance of 41.45 feet; thence N 04°18'12" E, a distance of 410.03 feet; thence N 04°04'15" E, a distance of 199.42 feet; thence S 88°12'15" E, a distance of 362.10 feet; thence S 10°25'26" E, a distance of 626.43 feet; thence S 66°38'05" W, a distance of 216.94 feet; thence N 54°38'24" W, a distance of 40.56 feet to the point of beginning, containing 6.96 Acres, more or less.

LINE	BEARING	DISTANCE
L1	N54°31'16"W	40.56'

LINE	CHORD BEARING	RADIUS	DELTA	CHORD
C1	N04°04'34"W	78.00'	16°40'55"	22.63'

Engineer:
Hurricane Valley Inc.
P.O. Box 118 Bryant, AR
501-847-7282

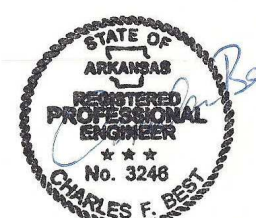
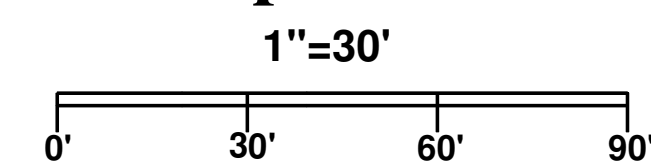
Surveyor:
Real Estate Service of Saline Co. Inc.
1200 Ferguson Dr., Suite 5
Benton, AR 72015
501-4315-8866

Developer:
Arkansas Storage Centers IX, LLC
Bryant, AR
501-666-1300

Zoning:
C2

Property Area:
6.96 Acres, 303,178 SF

Graphic Scale



HURRICANE VALLEY INC.
Professional Engineering Consultants

P.O. BOX 118
BRYANT, ARKANSAS 501-847-7282

SCALE: 1" = 30' DATE: 9-01-21

Open Storage
Site-Grading Plan

Bryant, Arkansas

HVI Job No. 16047

1 OF 1