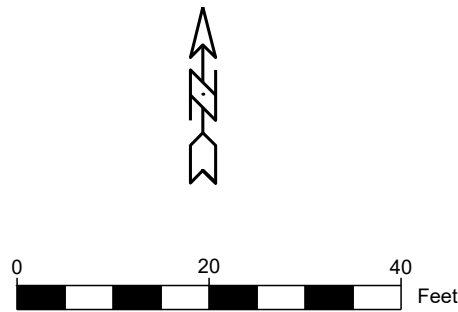


Y:\2025\2025 1010 FERGLSON ORIGINAL TOWN OF BRYANT\20251010 REPLAT.dwg | PLOTTED BY: Ray | PLOT DATE: 12/30/2025 5:53:29 AM | ©2024 ROBBINS PROFESSIONAL LAND SERVICES INCORPORATED

LEGEND	
●	SET 1/2" REBAR W/ CAP
○	FOUND MONUMENT
— R/W —	RIGHT-OF-WAY
— OHE —	OVERHEAD UTILITIES
— X —	FENCE
— + —	ROADWAY CENTERLINE
○	GUY WIRE
⊙	POWER/LIGHT POLE
(M)	MEASURED
(R)	RECORDED DISTANCE
(D)	PER DEED
—	BUILDING SETBACK LINE
—	UTILITY EASEMENT
⊗	WATER VALVE
⊗	FIRE HYDRANT
⊗	WATER METER
⊗	TELEPHONE PEDESTAL
⊗	LIGHT POLE
⊗	SANITARY SEWER MANHOLE
⊗	ELECTRIC BOX
⊗	STORM SEWER MANHOLE



LAND DESCRIPTION PROVIDED
LOTS 7 AND 8, BLOCK 14 OF THE TOWN, NOW CITY OF BRYANT, ARKANSAS.

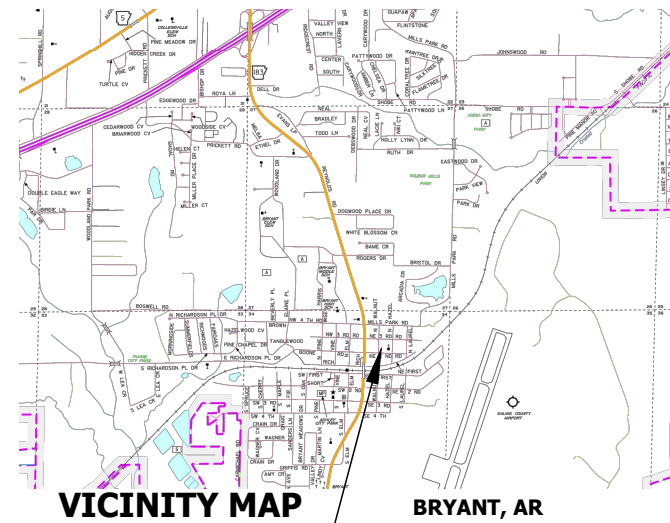
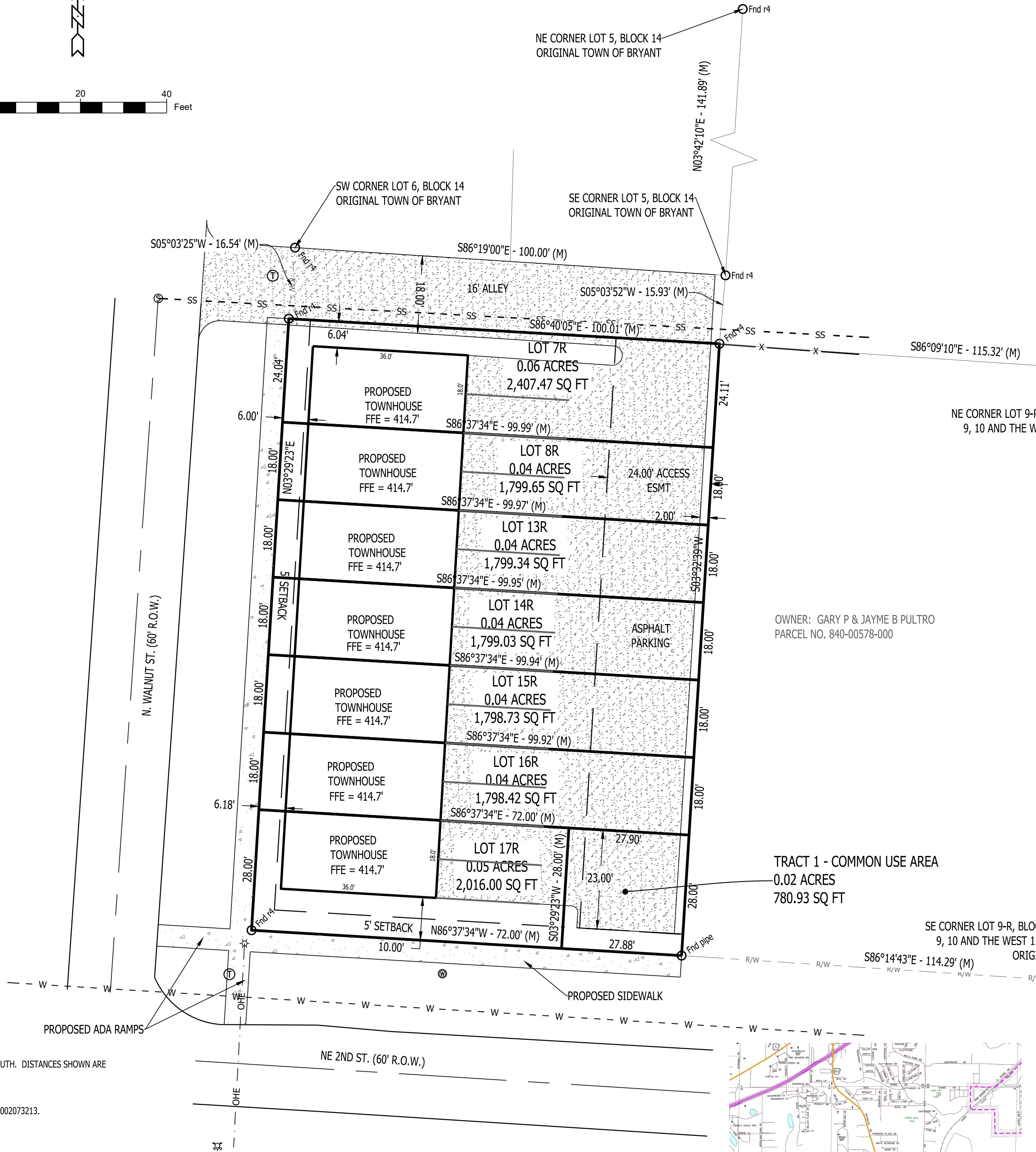
GENERAL NOTES

- BASIS OF BEARING FOR THIS SURVEY IS ARKANSAS GRID SOUTH. DISTANCES SHOWN ARE GROUND DISTANCES.
- REFERENCES:
 - PLAT OF THE TOWN OF BRYANT.
 - WARRANTY DEED TO MINA GLOVER. INSTRUMENT NO. 2002073213.

PROPERTY ADDRESS
203 NE SECOND ST
BRYANT, AR 72022

UTILITIES DISCLAIMER

UTILITIES SHOWN ARE NOTED BY VISIBLE OBSERVATION ONLY. UNDERGROUND UTILITIES ARE TAKEN FROM UTILITY MAPS; EXACT LOCATION OF UNDERGROUND UTILITIES ARE APPROXIMATE AS NO EXCAVATION HAS TAKEN PLACE AS OF THIS DATE TO DETERMINE THE EXACT LOCATION OF THE UNDERGROUND UTILITIES SHOWN ON THIS DRAWING.



SITE LOCATION



CERTIFICATION

I HEREBY CERTIFY THAT THE ABOVE PLAT REPRESENTS A SURVEY MADE BY ME OR UNDER MY SUPERVISION ON THIS DAY AND THAT ALL CORNERS ARE SET AS SHOWN. NO INDEPENDENT SEARCH FOR EASEMENTS, COVENANTS, ENCUMBRANCES, OR ANY OTHER FACTS WHICH AN ACCURATE TITLE SEARCH MAY DISCLOSE WAS PERFORMED.

Jayne Robbins
JAYNE ROBBINS, AR PLS #1853

DATE	REVISIONS
LOTS 1R-7R, A REPLAT OF LOTS 7 & 8, BLOCK 14 TOWN, NOW CITY OF BRYANT, ARKANSAS SALINE COUNTY	
PRELIMINARY PLOT PLAN	
ROBBINS PROFESSIONAL LAND SERVICES INCORPORATED	
SURVEYING GIS CONSTRUCTION STAKING	
P.O. BOX 939 BRYANT, ARKANSAS 72089 OFFICE: 501.425.6380 EMAIL: ZANEROBBINS@GMAIL.COM	
DRAWN BY	ZR
CHECKED BY	ZR
DATE	12/11/2025
SCALE	1"=20'
PROJECT No.	20251010
PAGE	1 of 1