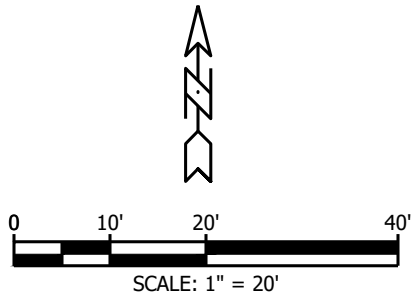


V:\2025\20251010 FERGUSON ORIGINAL TOWN OF BRYANT\20251010.dwg | PLOTTED BY: Ray | PLOT DATE: 12/5/2025 12:45:02 PM | ©2018 ROBBINS PROFESSIONAL LAND SERVICES INCORPORATED



LEGEND

●

SET 1/2" REBAR W/ CAP

○

FOUND MONUMENT

— R/W —

RIGHT-OF-WAY

— OHE —

OVERHEAD UTILITIES

— x —

FENCE

— - —

ROADWAY CENTERLINE

— ● —

GUY WIRE

⊕

POWER/LIGHT POLE

(M)

MEASURED

(P)

PER PLAT

(D)

PER DEED

— —

BUILDING SETBACK LINE

— | —

UTILITY EASEMENT

⊗

WATER VALVE

⊕

FIRE HYDRANT

⊗

WATER METER

⊞

TELEPHONE PEDESTAL

⊞

TELEPHONE PULLBOX



CERTIFICATION

I HEREBY CERTIFY THAT THE ABOVE PLAT REPRESENTS A SURVEY MADE BY ME OR UNDER MY SUPERVISION ON THIS DAY AND THAT ALL CORNERS ARE SET AS SHOWN. NO INDEPENDENT SEARCH FOR EASEMENTS, COVENANTS, ENCUMBRANCES, OR ANY OTHER FACTS WHICH AN ACCURATE TITLE SEARCH MAY DISCLOSE WAS PERFORMED.

Zane Robbins
ZANE ROBBINS, AR PLS #1853

UTILITIES DISCLAIMER

UTILITIES SHOWN ARE NOTED BY VISIBLE OBSERVATION ONLY. UNDERGROUND UTILITIES ARE TAKEN FROM UTILITY MAPS; EXACT LOCATION OF UNDERGROUND UTILITIES ARE APPROXIMATE AS NO EXCAVATION HAS TAKEN PLACE AS OF THIS DATE TO DETERMINE THE EXACT LOCATION OF THE UNDERGROUND UTILITIES SHOWN ON THIS DRAWING.

GENERAL NOTES

- BASIS OF BEARING FOR THIS SURVEY IS ARKANSAS GRID SOUTH. DISTANCES SHOWN ARE GROUND DISTANCES.
- REFERENCES:
 - PLAT OF THE TOWN OF BRYANT.
 - WARRANTY DEED TO MINA GLOVER. INSTRUMENT NO. 2002073213.

PROPERTY ADDRESS

203 NE SECOND ST
BRYANT, AR 72022

FOR THE USE & BENEFIT OF

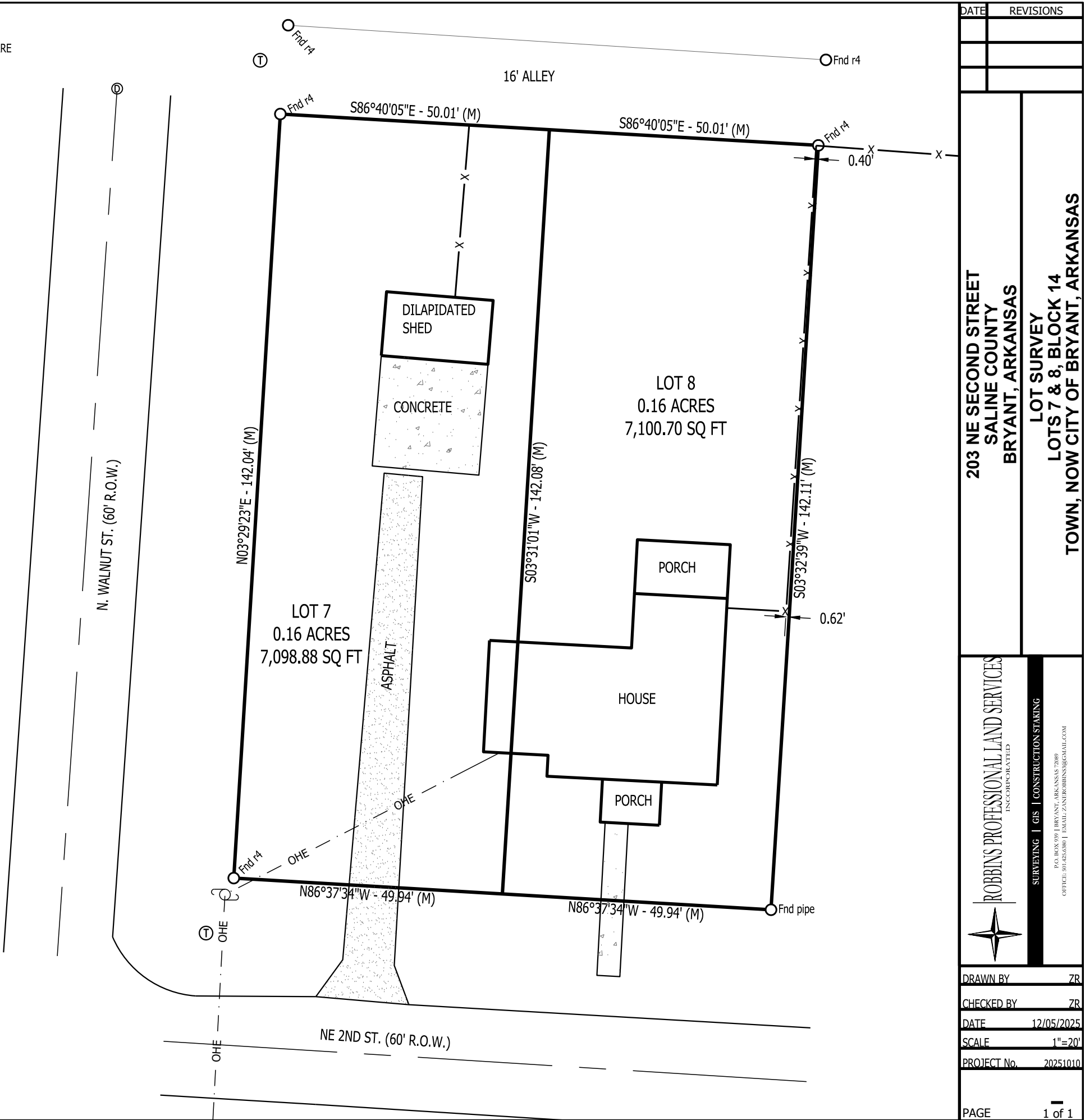
SAM FERGUSON
BART FERGUSON

LAND DESCRIPTION PROVIDED

LOTS 7 AND 8, BLOCK 14 OF THE TOWN, NOW CITY OF
BRYANT, ARKANSAS.

CURRENT OWNER OF RECORD

MINA JO GLOVER
203 NE SECOND ST
BRYANT, AR 72022



DATE	REVISIONS
203 NE SECOND STREET LOT SURVEY SALINE COUNTY LOTS 7 & 8, BLOCK 14 BRYANT, ARKANSAS TOWN, NOW CITY OF BRYANT, ARKANSAS	
ROBBINS PROFESSIONAL LAND SERVICES INCORPORATED SURVEYING GIS CONSTRUCTION STAKING P.O. BOX 987 BRYANT, ARKANSAS 72009 OFFICE: 501-425-5500 EMAIL: ZANE@ROBBINSLS.COM	
DRAWN BY	ZR
CHECKED BY	ZR
DATE	12/05/2025
SCALE	1"=20'
PROJECT No.	20251010
PAGE	1 of 1