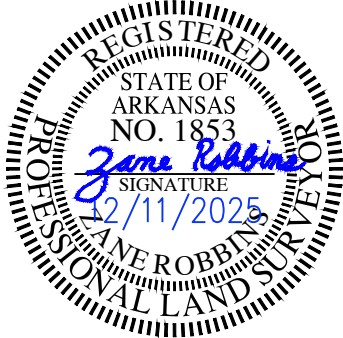


Y:\2025\2025 1010 FERGLISON ORIGINAL TOWN OF BRYANT\20251010 REPLAT.dwg | PLOTTED BY: Ray | PLOT DATE: 12/11/2025 9:02:54 AM | ©2024 ROBBINS PROFESSIONAL LAND SERVICES INCORPORATED



CERTIFICATION

I HEREBY CERTIFY THAT THE ABOVE PLAT REPRESENTS A SURVEY MADE BY ME OR UNDER MY SUPERVISION ON THIS DAY AND THAT ALL CORNERS ARE SET AS SHOWN. NO INDEPENDENT SEARCH FOR EASEMENTS, COVENANTS, ENCUMBRANCES, OR ANY OTHER FACTS WHICH AN ACCURATE TITLE SEARCH MAY DISCLOSE WAS PERFORMED.

*Jane Robbins*  
JANE ROBBINS, AR PLS #1853

LAND DESCRIPTION PROVIDED

LOTS 7 AND 8, BLOCK 14 OF THE TOWN, NOW CITY OF BRYANT, ARKANSAS.

GENERAL NOTES

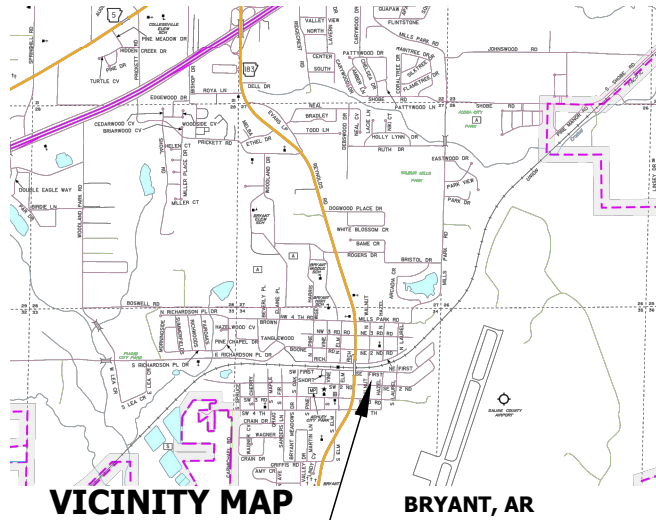
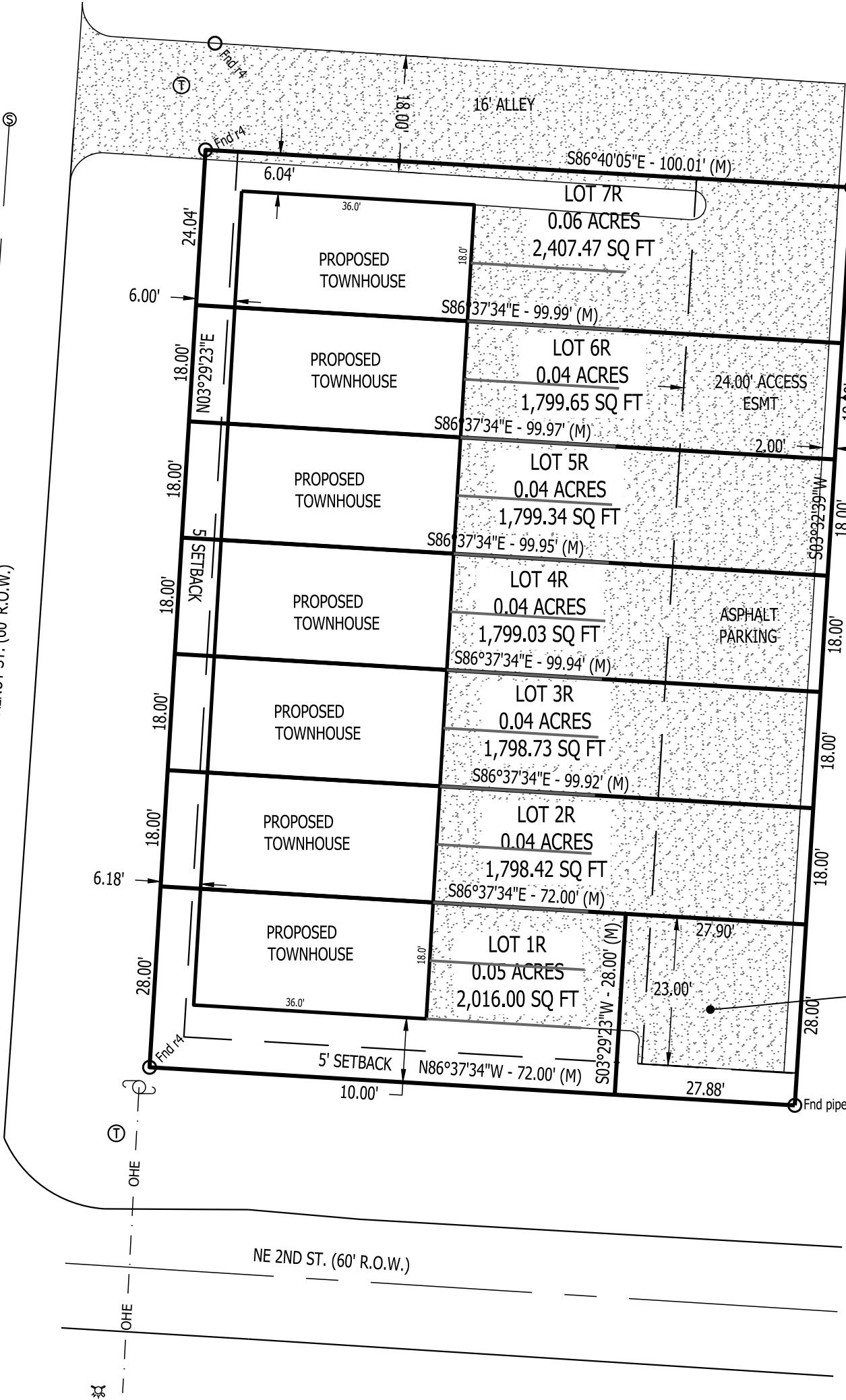
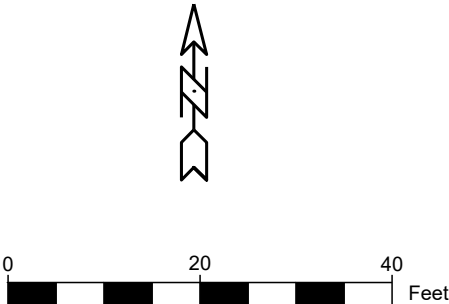
- BASIS OF BEARING FOR THIS SURVEY IS ARKANSAS GRID SOUTH. DISTANCES SHOWN ARE GROUND DISTANCES.
- REFERENCES:
  - PLAT OF THE TOWN OF BRYANT.
  - WARRANTY DEED TO MINA GLOVER. INSTRUMENT NO. 2002073213.

PROPERTY ADDRESS

203 NE SECOND ST  
BRYANT, AR 72022

UTILITIES DISCLAIMER

UTILITIES SHOWN ARE NOTED BY VISIBLE OBSERVATION ONLY. UNDERGROUND UTILITIES ARE TAKEN FROM UTILITY MAPS; EXACT LOCATION OF UNDERGROUND UTILITIES ARE APPROXIMATE AS NO EXCAVATION HAS TAKEN PLACE AS OF THIS DATE TO DETERMINE THE EXACT LOCATION OF THE UNDERGROUND UTILITIES SHOWN ON THIS DRAWING.



SITE LOCATION

LEGEND	
	SET 1/2" REBAR W/ CAP
	FOUND MONUMENT
	RIGHT-OF-WAY
	OVERHEAD UTILITIES
	FENCE
	ROADWAY CENTERLINE
	GUY WIRE
	POWER/LIGHT POLE
	MEASURED
	RECORDED DISTANCE
	PER DEED
	BUILDING SETBACK LINE
	UTILITY EASEMENT
	WATER VALVE
	FIRE HYDRANT
	WATER METER
	TELEPHONE PEDESTAL
	LIGHT POLE
	SANITARY SEWER MANHOLE
	ELECTRIC BOX
	STORM SEWER MANHOLE

LOTS 1R-7R, A REPLAT OF LOTS 7 & 8, BLOCK 14  
TOWN, NOW CITY OF BRYANT, ARKANSAS  
SALINE COUNTY

ROBBINS PROFESSIONAL LAND SERVICES  
INCORPORATED



DRAWN BY ZR

CHECKED BY ZR

DATE 12/11/2025

SCALE 1"=20'

PROJECT No. 20251010

PAGE 1 of 1

PRELIMINARY PLOT PLAN