

⊙	GAS METER	⑩	STORM DRAIN MANHOLE		ASPHALT
⊙	WATER METER	⑥/⑦	SEWER CLEANOUT		
●	GUY WIRE	N	NORTH		
⊙	POWER/UTILITY POLE	S	SOUTH		CONCRETE
⊙	TELEPHONE PEDESTAL	E	EAST		
⑤	SEWER MANHOLE	W	WEST		
⊙	WATER VALVE	(M)	AS MEASURED	●	SET 1/2" REBAR w/ CAP #1853
⊙	FIRE HYDRANT	(D)	PER DEED	●	SET COTTON-PICKER SPINDLE
⊙	SIGNS	(R)	RECORDED	○	FOUND MONUMENT (DESC. NOTED)
⊙	LIGHT POLE	R/W	RIGHT-OF-WAY	△	COMPUTED CORNER (NOT SET)
⊙	TELEPHONE MANHOLE	L.A.	LANDSCAPED AREA	▲	CORRESPONDS TO DRAWING NOTE
--- SS ---	SANITARY SEWER LINE	CR4	CAPPED 1/2" REBAR		
--- W ---	WATER LINE	CONC.	CONCRETE		
-----	STORM SEWER PIPE	P.O.C.	POINT OF COMMENCEMENT		
-----	ROADWAY CENTERLINE	P.O.B.	POINT OF BEGINNING		
-----	UTILITY EASEMENT	CMP	CORRUGATED METAL PIPE		
-----	BUILDING SETBACK LINE	RCP	REINFORCED CONCRETE PIPE		
--- RW ---	ROADWAY RIGHT-OF-WAY	ESMT	EASEMENT		
--- OHE ---	OVERHEAD ELECTRIC LINES	HDPE	HIGH DENSITY POLYETHYLENE		
--- UET ---	UNDERGROUND TELEPHONE	SUBD	SUBDIVISION		
--- G ---	UNDERGROUND GAS	FDC	FIRE DEPARTMENT CONNECTION		
--- F.O. ---	UNDERGROUND FIBER OPTIC	CPS	COTTON PICKER SPINDLE		
		P5	5/8" PIPE		

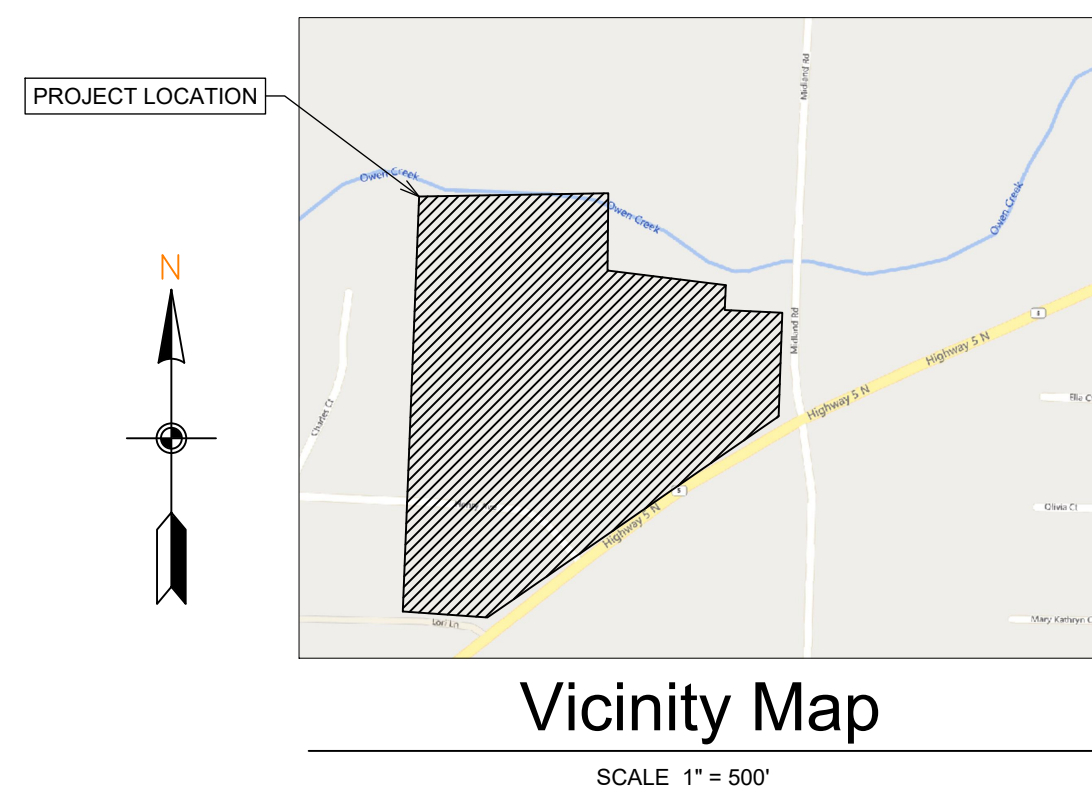
GENERAL CONSTRUCTION NOTES

- A. THE CONTRACTOR WILL BE HELD SOLELY RESPONSIBLE FOR DAMAGES OCCURRING TO ANY PROPERTY DURING THE CONSTRUCTION OF THIS PROJECT. SAID CONTRACTOR SHALL TAKE ALL NECESSARY PRECAUTIONS TO PREVENT PROPERTY DAMAGE.
- B. IN ACCORDANCE WITH GENERALLY ACCEPTED CONSTRUCTION PRACTICES, THE CONTRACTOR WILL SOLELY AND COMPLETELY BE RESPONSIBLE FOR CONDITIONS OF THE JOB SITE, INCLUDING SAFETY WORK. THIS REQUIREMENT WILL APPLY CONTINUOUSLY AND WILL NOT BE LIMITED TO NORMAL WORKING HOURS.
- C. THE DUTY OF THE LOCAL UTILITY PROVIDER TO CONDUCT CONSTRUCTION INSPECTION REVIEWS OF THE CONTRACTOR'S PERFORMANCE IS NOT AN INSPECTION OR REVIEW OF THE ADEQUACY OF THE CONTRACTOR'S SAFETY MEASURES IN, ON, OR NEAR THE CONSTRUCTION SITE.
- D. ALL WATER AND SEWER IMPROVEMENTS SHALL BE CONSTRUCTED IN ACCORDANCE WITH THE LATEST REVISION TO THE LOCAL PROVIDER'S WATER AND WASTEWATER (SANITARY SEWER) STANDARD SPECIFICATIONS.
- E. THE CONTRACTOR IS SPECIFICALLY CAUTIONED THAT THE LOCATION AND/OR ELEVATION OF EXISTING UTILITIES AS SHOWN ON THESE PLANS IS BASED ON RECORDS OF THE VARIOUS UTILITY COMPANIES AND, WHERE POSSIBLE, MEASUREMENTS TAKEN IN THE FIELD. THE INFORMATION IS NOT TO BE RELIED ON AS BEING EXACT OR COMPLETE. THE CONTRACTOR MUST CALL THE APPROPRIATE UTILITY COMPANY AT LEAST 48 HOURS BEFORE ANY EXCAVATION TO REQUEST EXACT FIELD LOCATION OF ALL UTILITIES. IT SHALL BE THE RESPONSIBILITY OF THE CONTRACTOR TO LOCATE ALL EXISTING UTILITIES WHICH CONFLICT WITH PROPOSED IMPROVEMENTS SHOWN ON THE PLAN.
- F. CONTRACTOR IS TO REMOVE AND DISPOSE OF ALL DEBRIS, RUBBISH, AND OTHER MATERIALS RESULTING FROM PREVIOUS AND CURRENT DEMOLITION OPERATIONS. DISPOSAL WILL BE IN ACCORDANCE WITH ALL LOCAL, STATE AND/OR FEDERAL REGULATIONS GOVERNING SUCH OPERATIONS.
- G. PRIOR TO INSTALLATION OF ANY UTILITIES, THE CONTRACTOR IS TO EXCAVATE, VERIFY AND CALCULATE ALL CROSSINGS AND INFORM ANY AND ALL UTILITIES OF ANY CONFLICTS PRIOR TO CONSTRUCTION.
- H. CONSTRUCTION SHALL NOT START ON ANY WATER UTILITY TIE-INS UNTIL APPROVAL IS GIVEN BY THE LOCAL UTILITY PROVIDER. SAID CONTRACTOR SHALL NOT OPERATE ANY VALVE, HYDRANT, OR WATER UTILITY APPURTENANCE NOR SHALL HE ATTACH TO OR TAP ANY WATER UTILITY MAIN WITHOUT APPROVAL. THE CONTRACTOR SHALL BEAR THE COST AND CONSEQUENCE OF ANY DISRUPTION OF UTILITY OPERATION CAUSED BY CONSTRUCTION.
- I. FIBER OPTIC CABLE ON AND/OR ADJACENT TO THIS SITE WERE NOT LOCATED BY THE SURVEY AND ARE NOT SHOWN. IT IS THE RESPONSIBILITY OF THE CONTRACTOR TO LOCATE ANY FIBER OPTIC CABLES ASSOCIATED WITH THIS SITE AND TAKE ALL NECESSARY AND REQUIRED PRECAUTIONS TO PROTECT ANY EXISTING FIBER OPTIC CABLES. CONTRACTORS SHALL COORDINATE ALL EFFORTS WITH OWNER OF FIBER OPTIC CABLES OR THEIR DESIGNATED REPRESENTATIVE.
- J. THE CONTRACTOR IS RESPONSIBLE FOR CONTACTING "ONECALL" SERVICE TO MARK ALL UTILITIES PRIOR TO ANY DEMOLITION, EARTHWORK, OR UTILITY WORK ON THIS SITE.

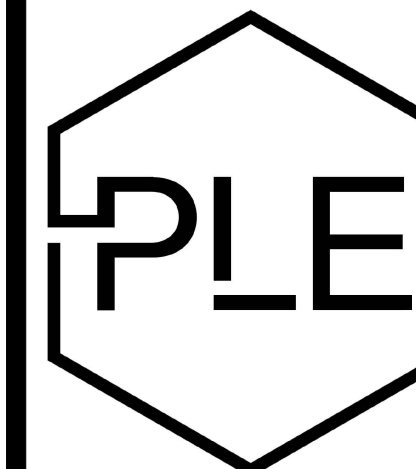
NEW BEGINNINGS

HIGHWAY 5 BRYANT, AR

Sheet List Table	
Sheet Number	Sheet Title
C1.0	COVER SHEET
C1.1	OVERALL SITE PLAN
C1.2	ENLARGED SITE PLAN
C1.3	SITE DETAILS
C1.4	GRADING PLAN
C1.5	ENLARGED GRADING PLAN
C1.6	UTILITY PLAN
C1.7	UTILITY PROFILES
C1.8	UTILITY DETAILS I
C1.9	UTILITY DETAILS II
C1.10	PRE-DEV DRAINAGE
C1.11	POST-DEV DRAINAGE
C1.12	LANDSCAPE PLAN
C1.13	SWPPP



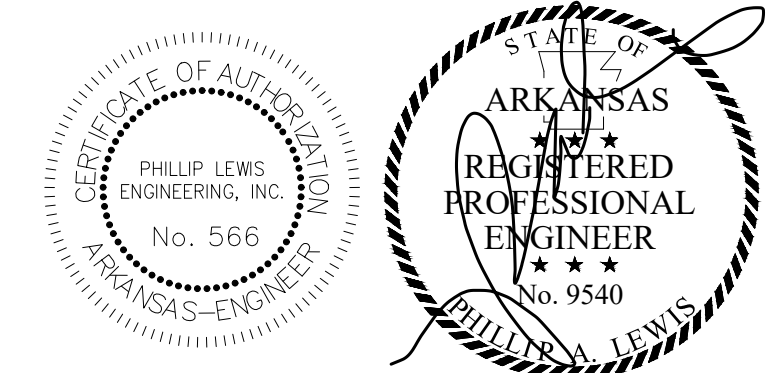
DEVIATIONS/VARIANCES

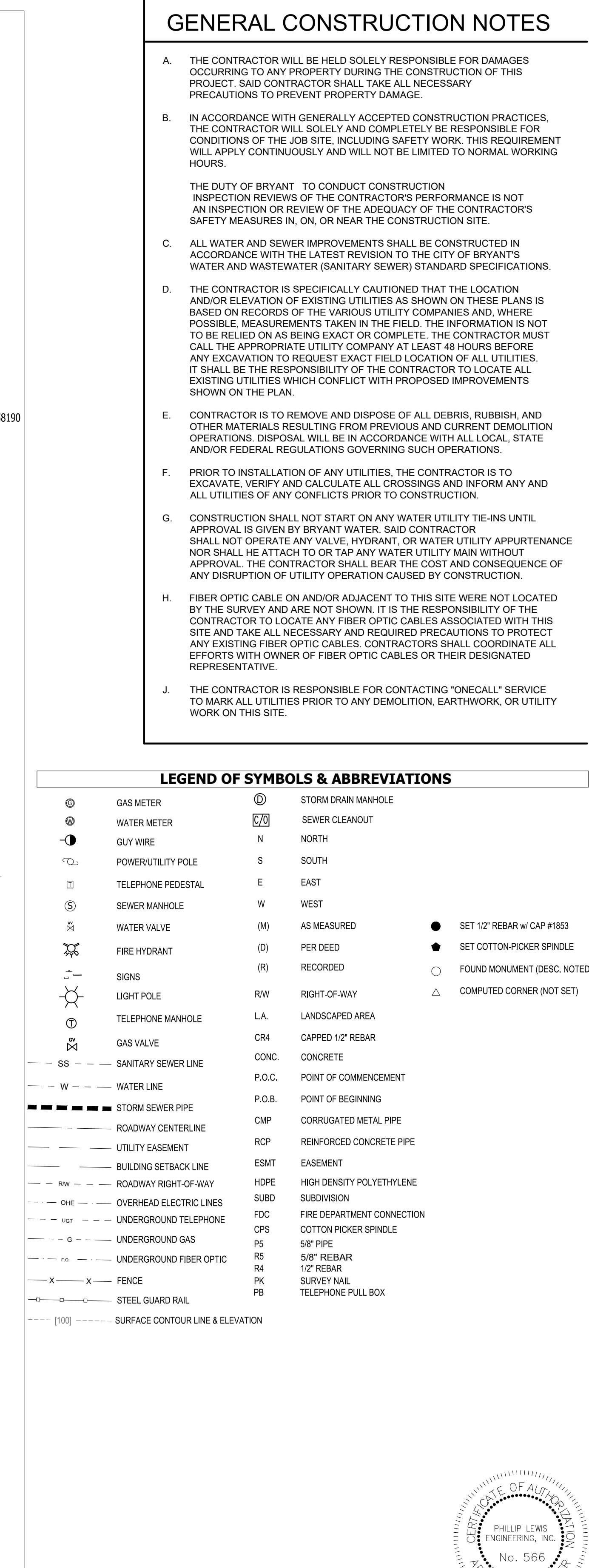


PHILLIP LEWIS ENGINEERING, INC.

Structural + Civil Consultants

23620 Interstate 30 | Bryant, Arkansas
PH: 501-350-9840

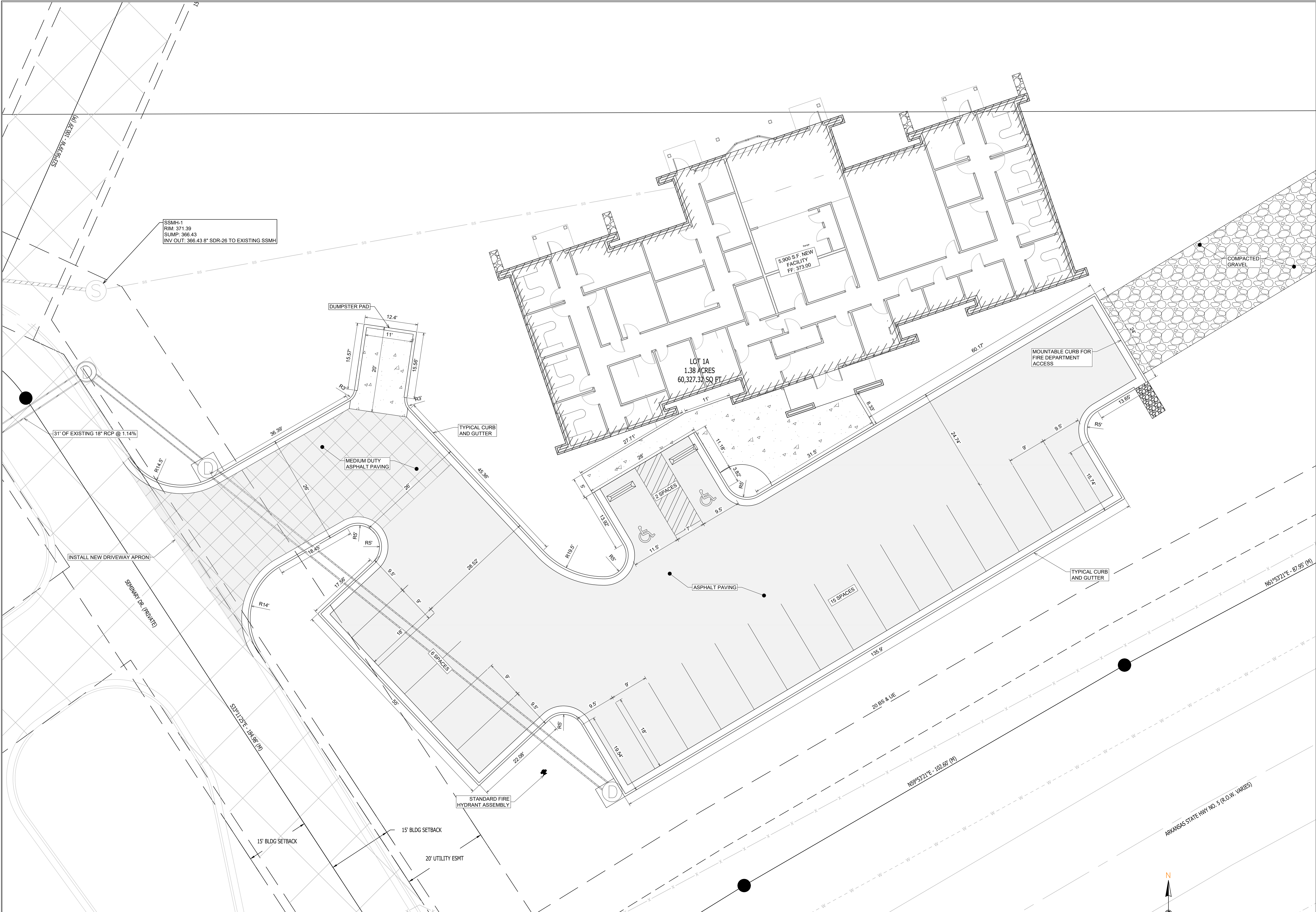




SCALE 1" = 40'

C1.1

NEW BEGINNINGS



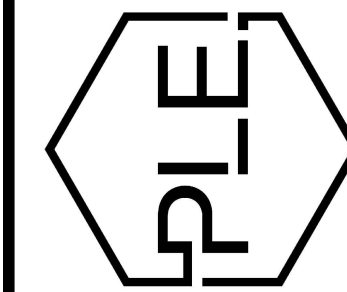
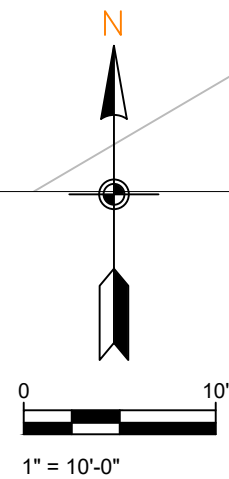
ENLARGED SITE PLAN

1. TOTAL NEW DEVELOPMENT AREA = (+/-) 1.8 ACRES
2. PROPERTY IS ZONED C-2
3. 23 PARKING SPACES PROVIDED INCLUDING 2 ADA ACCESSIBLE PARKING SPACES
4. ALL DIMENSIONS ARE TO THE BACK OF CURB AND/OR EDGE OF PAVEMENT
5. DAMAGE TO PUBLIC AND PRIVATE PROPERTY DUE TO HAULING OPERATIONS OR OPERATIONS OF CONSTRUCTION RELATED EQUIPMENT FROM A CONSTRUCTION SITE SHALL BE REPAIRED BY THE THE RESPONSIBLE PARTY PRIOR TO THE ISSUANCE OF A CERTIFICATE OF OCCUPANCY.
6. REPAIR, REPLACE, OR EXTEND EXISTING DAMAGED OR MISSING CURB AND GUTTER, SIDEWALK OR RAMPS WITHIN THE PUBLIC RIGHT OF WAY.
7. ALL SIGNAGE, PAVEMENT MARKING AND PARKING LOT STRIPING SHALL CONFORM TO REQUIREMENTS GIVEN IN MANUAL OF UNIFORM TRAFFIC CONTROL DEVICES (MUTCD). MUTCD REQUIRES THAT PARKING SPACES BE MARKED IN WHITE.

SCALE 1" = 10'

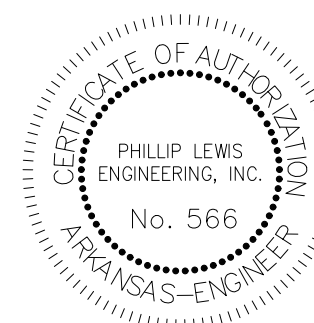
LEGEND

	LIGHT DUTY HMAC ASPHALT SURFACE COURSE		CONCRETE PAVING OR SIDEWALK
	MEDIUM DUTY HMAC ASPHALT SURFACE COURSE		COMPACTED GRAVEL



REVISION:

NEW BEGINNINGS
HIGHWAY 5
BRYANT, ARKANSAS



PROJECT NUMBER:

SHEET ISSUE DATE:
08-06-2025

PAGE TITLE:

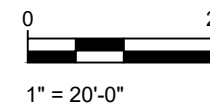
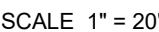
ENLARGED
SITE PLAN

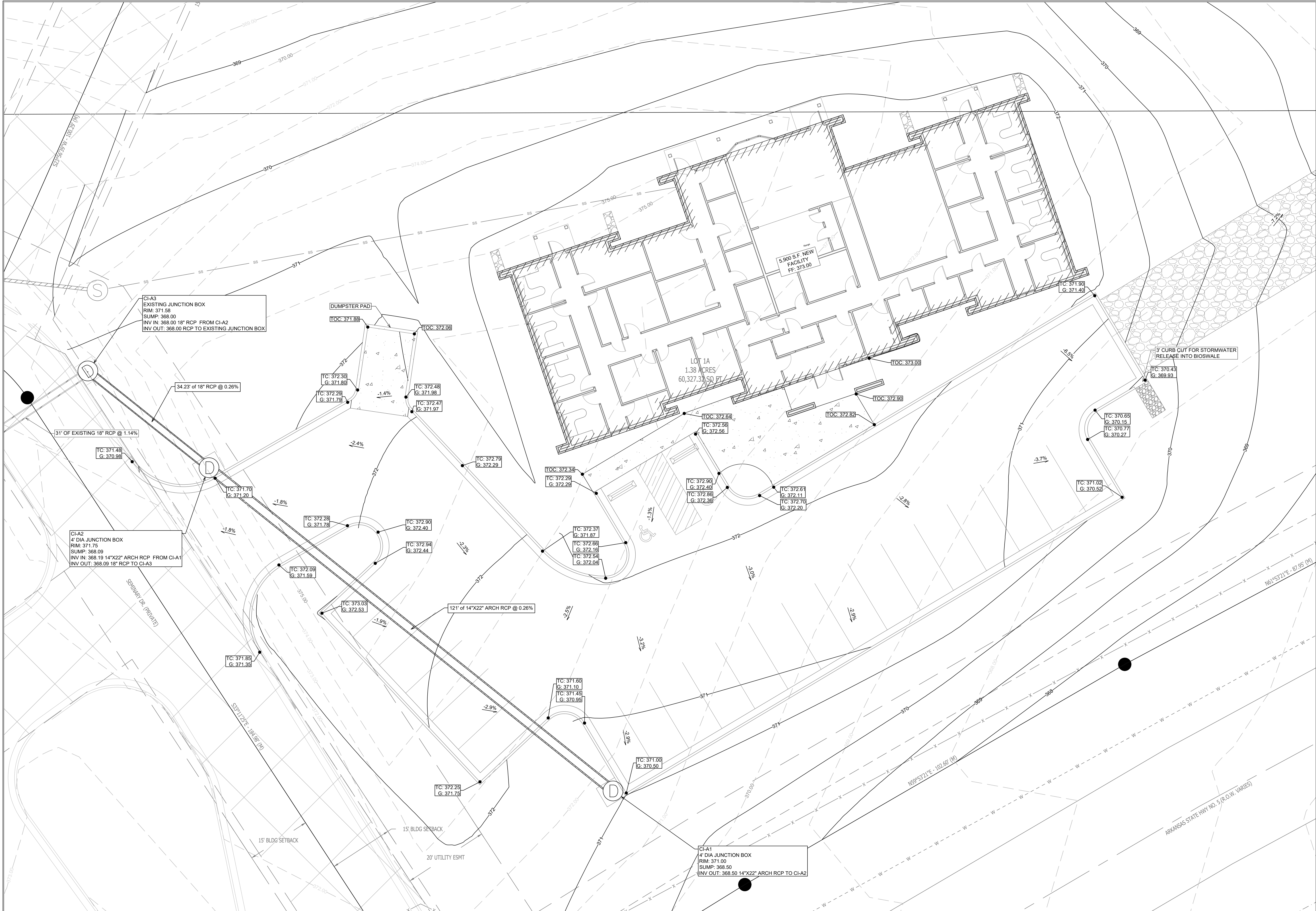
SHEET NUMBER:

C1.2



C1.3





ENLARGED GRADING PLAN

PHILLIP LEWIS ENGINEERING, INC.
Structural + Civil Consultants
23620 Interstate 30 | Bryant, Arkansas
PH: 501-350-9840

REVISION:

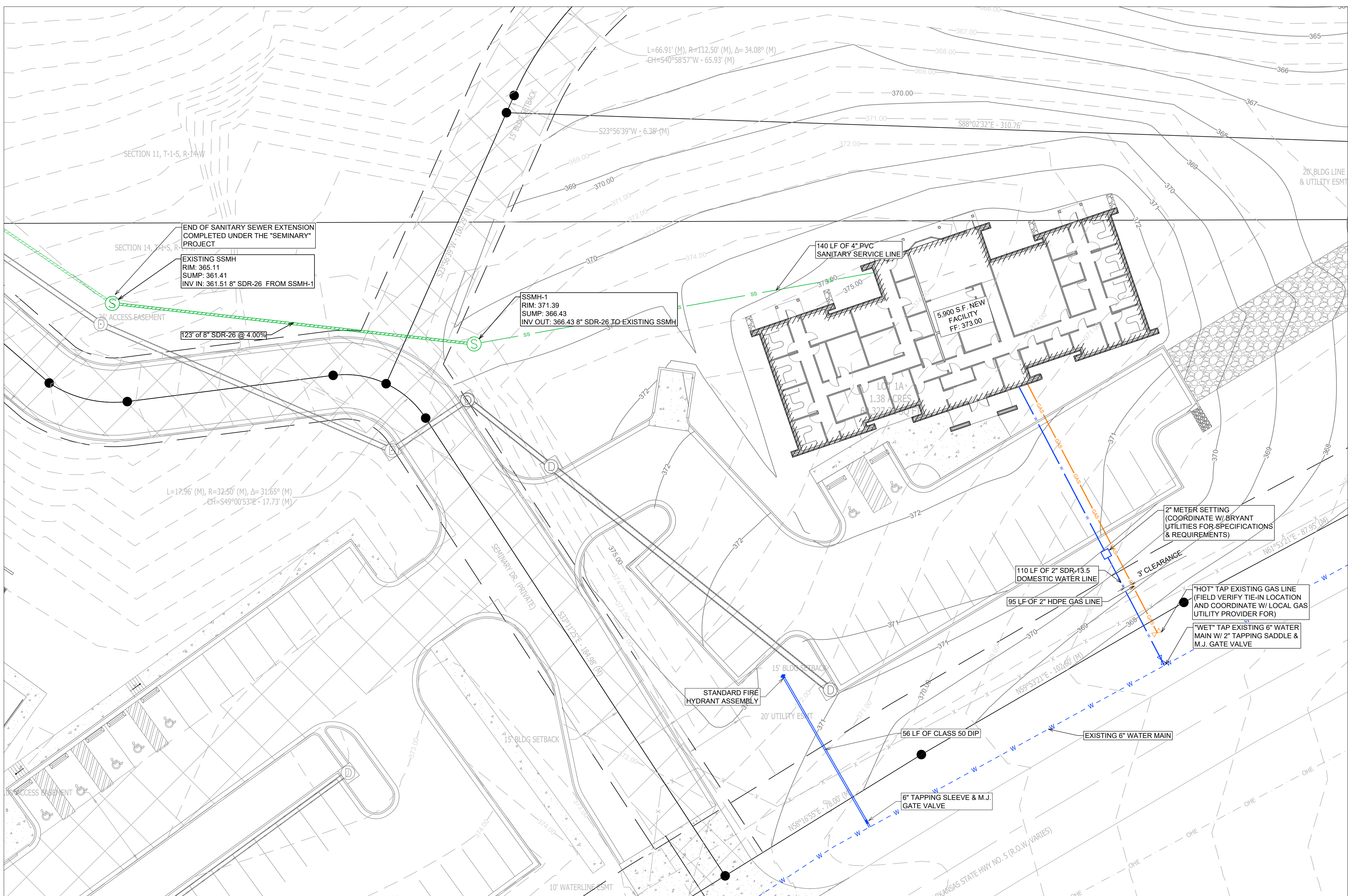
NEW BEGININGS
HIGHWAY 5
BRYANT, ARKANSAS

PROJECT NUMBER:

SHEET ISSUE DATE:
08-06-2025

PAGE TITLE:
ENLARGED GRADING PLAN

SHEET NUMBER:
C1.5

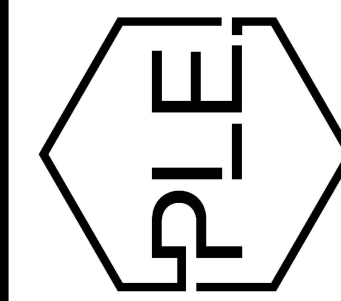


UTILITY PLAN

GENERAL CONSTRUCTION NOTES

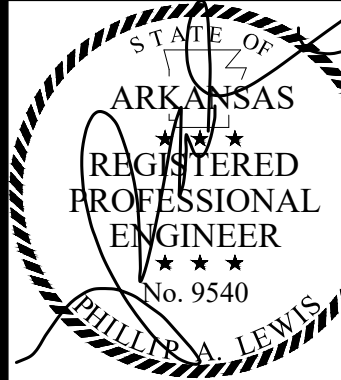
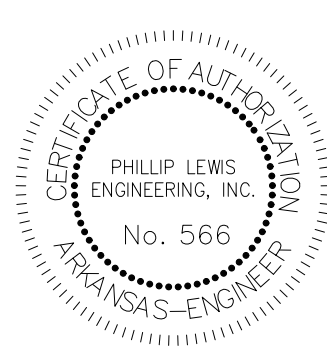
- A. THE CONTRACTOR WILL BE HELD SOLELY RESPONSIBLE FOR DAMAGES OCCURRING TO ANY PROPERTY DURING THE CONSTRUCTION OF THIS PROJECT. SAID CONTRACTOR SHALL TAKE ALL NECESSARY PRECAUTIONS TO PREVENT PROPERTY DAMAGE.
- B. IN ACCORDANCE WITH GENERALLY ACCEPTED CONSTRUCTION PRACTICES, THE CONTRACTOR WILL SOLELY AND COMPLETELY BE RESPONSIBLE FOR CONDITIONS OF THE JOB SITE, INCLUDING SAFETY WORK. THIS REQUIREMENT WILL APPLY CONTINUOUSLY AND WILL NOT BE LIMITED TO NORMAL WORKING HOURS.
- C. ALL WATER AND SEWER IMPROVEMENTS SHALL BE CONSTRUCTED IN ACCORDANCE WITH THE LATEST REVISION TO THE CITY OF BRYANT'S WATER AND WASTEWATER (SANITARY SEWER) STANDARD SPECIFICATIONS.
- D. THE CONTRACTOR IS SPECIFICALLY CAUTIONED THAT THE LOCATION AND/OR ELEVATION OF EXISTING UTILITIES AS SHOWN ON THESE PLANS IS BASED ON RECORDS OF THE VARIOUS UTILITY COMPANIES AND, WHERE POSSIBLE, MEASUREMENTS TAKEN IN THE FIELD. THE INFORMATION IS NOT TO BE RELIED ON AS BEING EXACT OR COMPLETE. THE CONTRACTOR MUST CALL THE APPROPRIATE UTILITY COMPANY AT LEAST 48 HOURS BEFORE ANY EXCAVATION TO REQUEST EXACT FIELD LOCATION OF ALL UTILITIES. IT SHALL BE THE RESPONSIBILITY OF THE CONTRACTOR TO LOCATE ALL EXISTING UTILITIES WHICH CONFLICT WITH PROPOSED IMPROVEMENTS SHOWN ON THE PLAN.
- E. CONTRACTOR IS TO REMOVE AND DISPOSE OF ALL DEBRIS, RUBBISH, AND OTHER MATERIALS RESULTING FROM PREVIOUS AND CURRENT DEMOLITION OPERATIONS. DISPOSAL WILL BE IN ACCORDANCE WITH ALL LOCAL, STATE AND/OR FEDERAL REGULATIONS GOVERNING SUCH OPERATIONS.
- F. PRIOR TO INSTALLATION OF ANY UTILITIES, THE CONTRACTOR IS TO EXCAVATE, VERIFY AND CALCULATE ALL CROSSINGS AND INFORM ANY AND ALL UTILITIES OF ANY CONFLICTS PRIOR TO CONSTRUCTION.
- G. CONSTRUCTION SHALL NOT START ON ANY WATER UTILITY TIE-INS UNTIL APPROVAL IS GIVEN BY BRYANT WATER. SAID CONTRACTOR SHALL NOT OPERATE ANY VALVE, HYDRANT, OR WATER UTILITY APPURTENANCE NOR SHALL HE ATTACH TO OR TAP ANY WATER UTILITY MAIN WITHOUT APPROVAL. THE CONTRACTOR SHALL BEAR THE COST AND CONSEQUENCE OF ANY DISRUPTION OF UTILITY OPERATION CAUSED BY CONSTRUCTION.
- H. FIBER OPTIC CABLE ON AND/OR ADJACENT TO THIS SITE WERE NOT LOCATED BY THE SURVEY AND ARE NOT SHOWN. IT IS THE RESPONSIBILITY OF THE CONTRACTOR TO LOCATE ANY FIBER OPTIC CABLES ASSOCIATED WITH THIS SITE AND TAKE ALL NECESSARY AND REQUIRED PRECAUTIONS TO PROTECT ANY EXISTING FIBER OPTIC CABLES. CONTRACTORS SHALL COORDINATE ALL EFFORTS WITH OWNER OF FIBER OPTIC CABLES OR THEIR DESIGNATED REPRESENTATIVE.
- J. THE CONTRACTOR IS RESPONSIBLE FOR CONTACTING "ONECALL" SERVICE TO MARK ALL UTILITIES PRIOR TO ANY DEMOLITION, EARTHWORK, OR UTILITY WORK ON THIS SITE.

PHILLIP LEWIS ENGINEERING, INC.
Structural + Civil Consultants
23620 Interstate 30 | Bryant, Arkansas
PH: 501-350-9840



REVISION:

NEW BEGININGS
HIGHWAY 5
BRYANT, ARKANSAS



PROJECT NUMBER:

SHEET ISSUE DATE:
08-06-2025

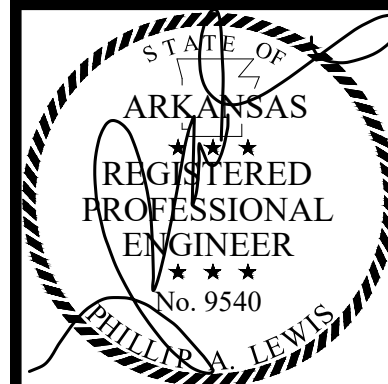
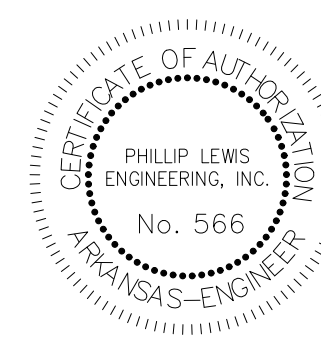
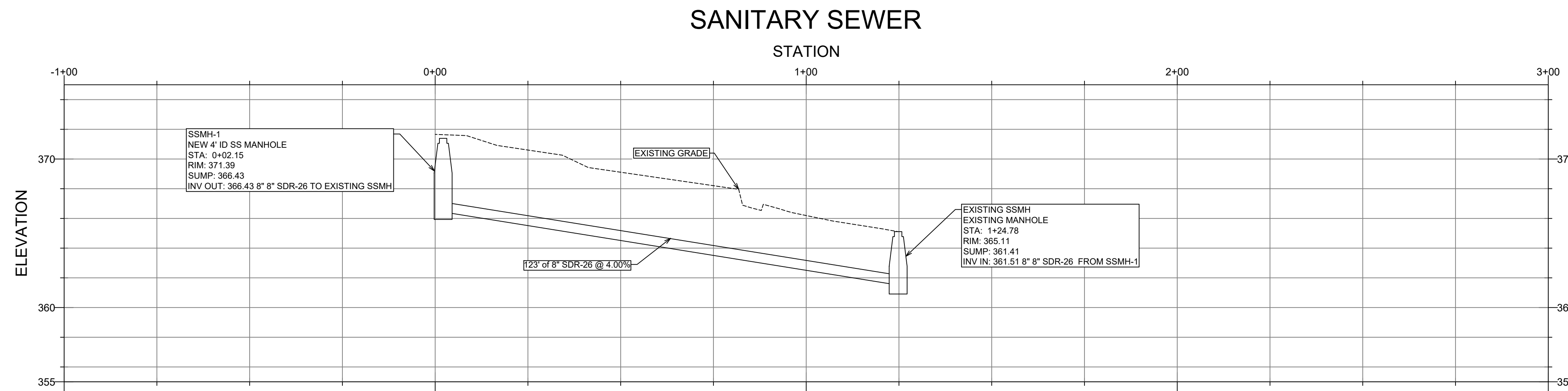
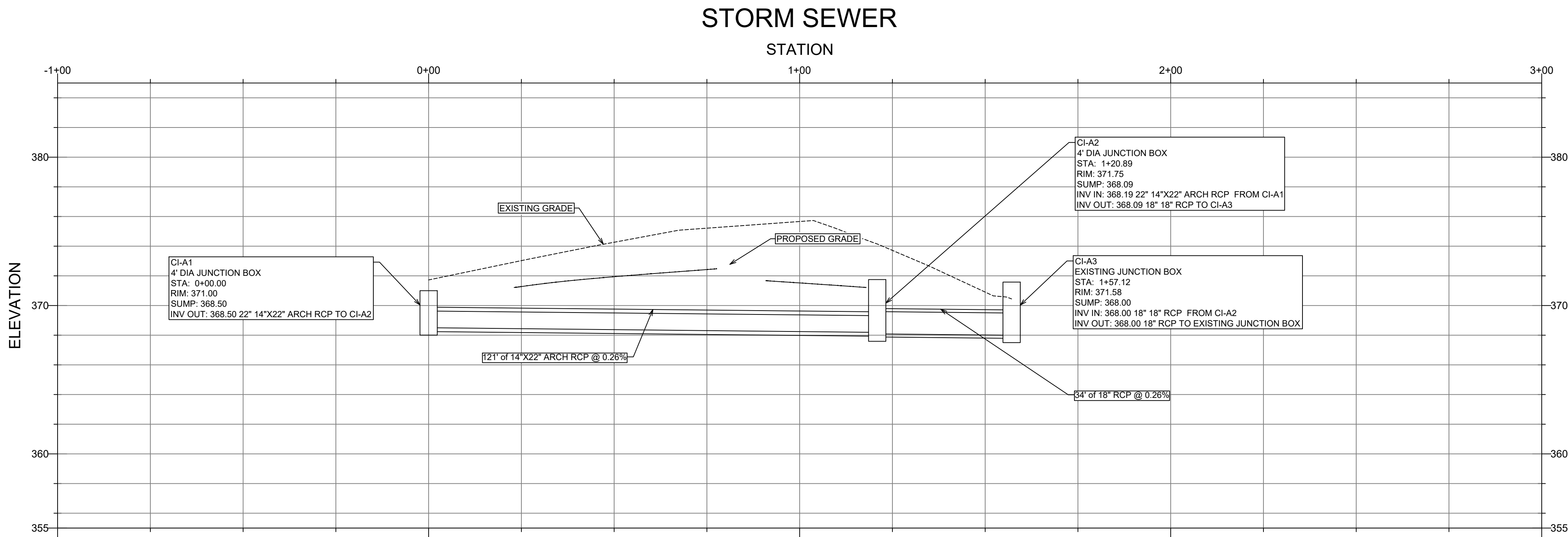
PAGE TITLE:

UTILITY PLAN

SHEET NUMBER:
C1.6



Know what's below.
Call before you dig.



PROJECT NUMBER:

SHEET ISSUE DATE:
C1.7

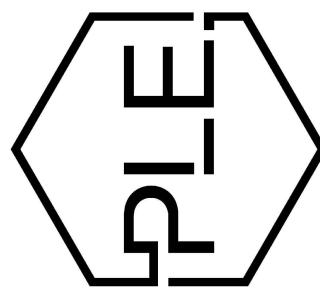
PAGE TITLE:

UTILITY
PROFILES

SHEET NUMBER:

C1.7

PHILLIP LEWIS ENGINEERING, INC.
Structural + Civil Consultants

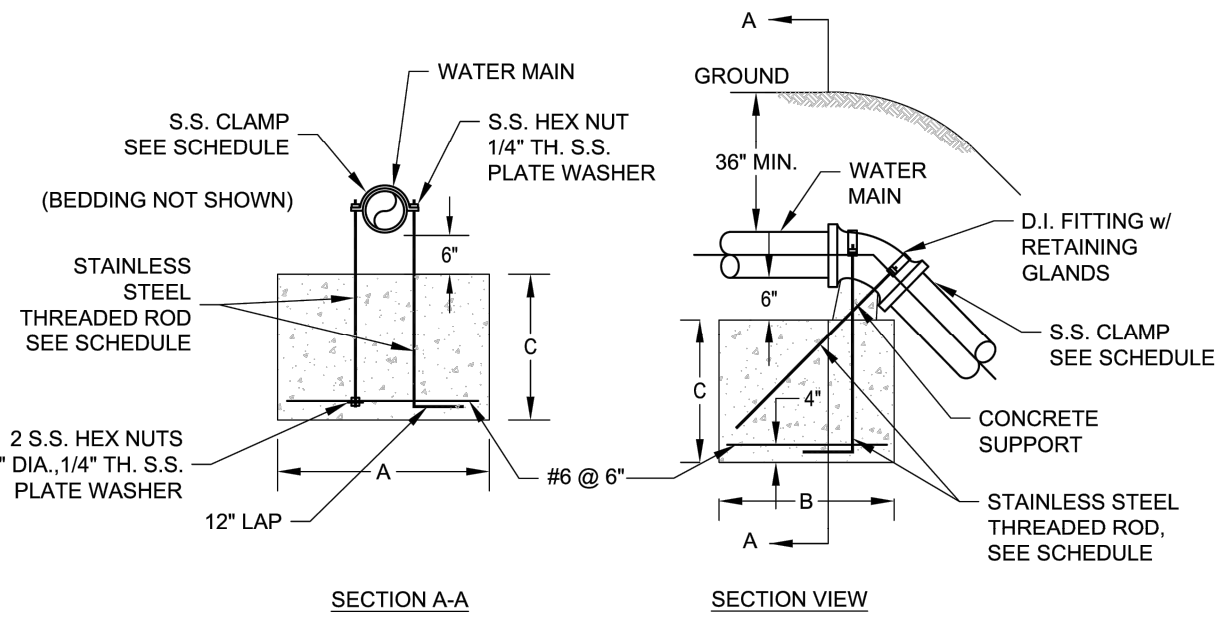


23620 Interstate 30 | Bryant, Arkansas
PH: 501-350-9840

NEW BEGININGS
HIGHWAY 5
BRYANT, ARKANSAS

BLOCKING SCHEDULE					
PIPE SIZE	BENDS				ROD DIA.
	45°	22 1/2°	11 1/4°		
8"	VOLUME REQ'D (CU. FT.)	96.5	50.2	20.2	3/4 IN.
	A (FT.)	5.00'	4.00'	3.00'	
	B (FT.)	4.00'	3.20'	2.80'	
	C (FT.)	5.00'	4.00'	3.00'	
12"	MIN. CLAMP (2 EA.)	3/8 IN. x 2 IN.			3/4 IN.
	VOLUME REQ'D (CU. FT.)	209.5	106.8	53.7	
	A (FT.)	6.00'	5.00'	4.00'	
	B (FT.)	6.00'	4.25'	3.50'	
18"	MIN. CLAMP (2 EA.)	1/2 IN. x 2 IN.			1 IN.
	VOLUME REQ'D (CU. FT.)	457.2	233.1	117.1	
	A (FT.)	8.00'	6.50'	5.00'	
	B (FT.)	7.25'	5.50'	4.75'	
24"	MIN. CLAMP (2 EA.)	5/8 IN. x 3 IN.			1 1/4 IN.
	VOLUME REQ'D (CU. FT.)	800.3	408.0	205.0	
	A (FT.)	9.50'	7.50'	6.00'	
	B (FT.)	9.00'	7.25'	5.75'	
30"	MIN. CLAMP (2 EA.)	3/4 IN. x 3 IN.			1 1/2 IN.
	VOLUME REQ'D (CU. FT.)	1200.3	612.0	307.5	
	A (FT.)	11.00'	9.00'	7.00'	
	B (FT.)	10.00'	8.50'	6.50'	

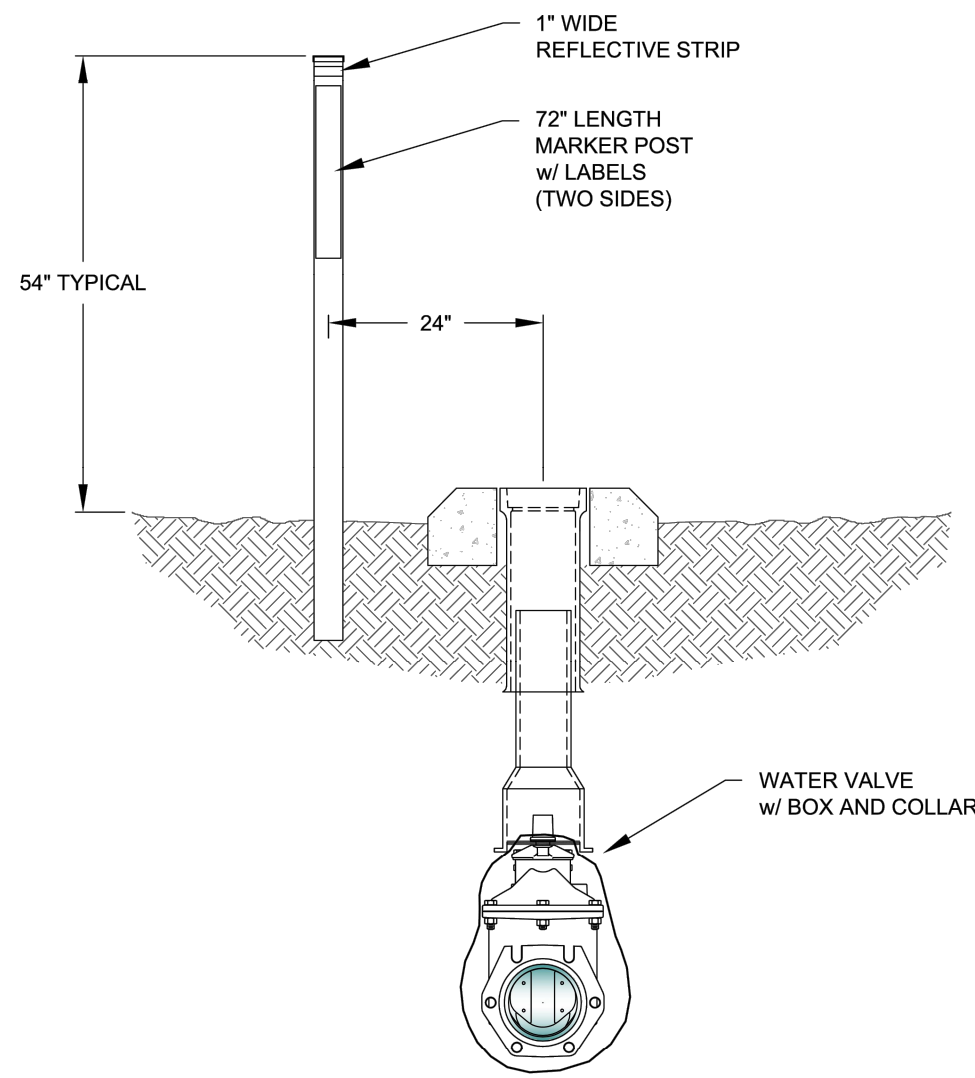
ALL FITTINGS SHALL BE MECHANICAL JOINTS WITH RETAINING GLANDS. BEDDING NOT SHOWN



VERTICAL TIE-DOWN BLOCKING

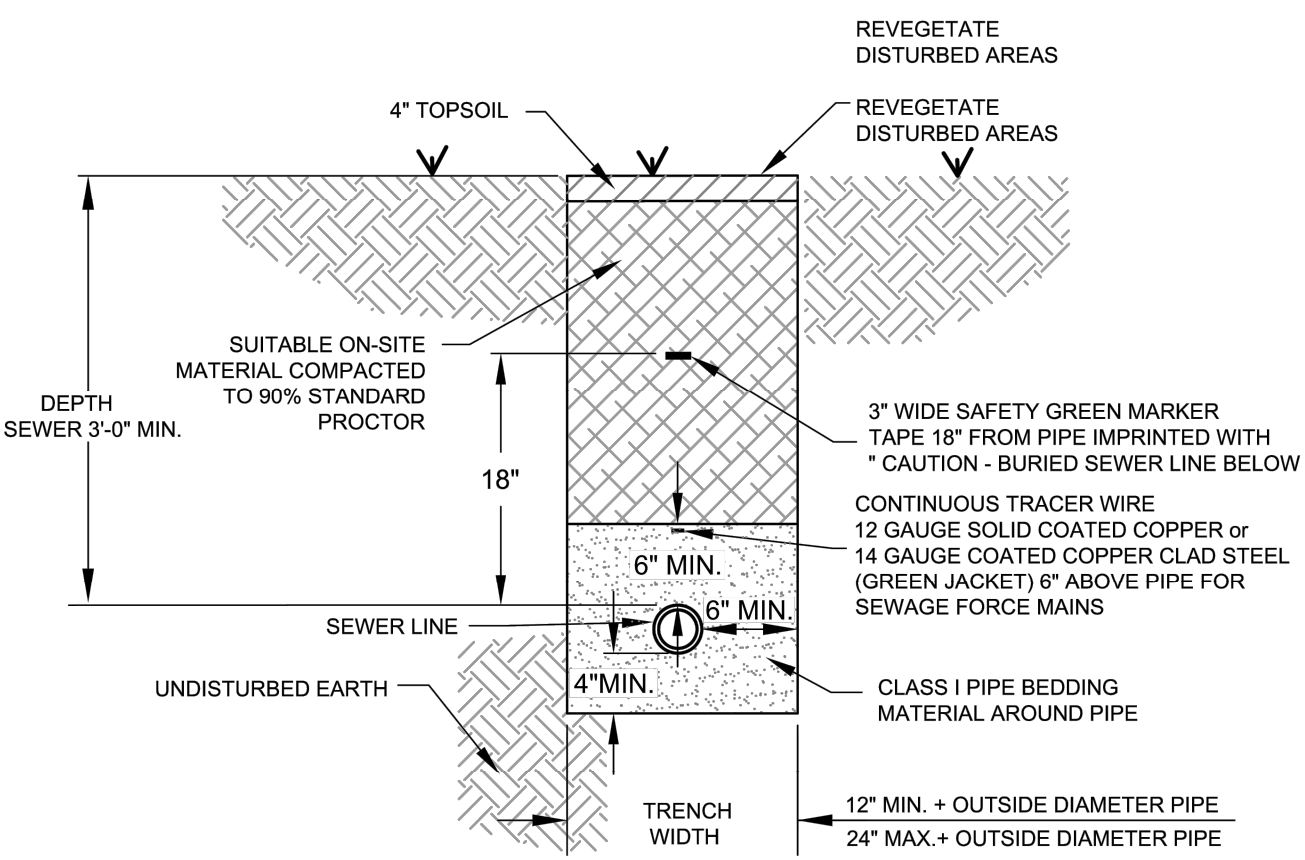
	CITY OF BRYANT, AR	TITLE: WATER DETAILS	DATE: APRIL 2015	SHEET: W17
	WATER UTILITIES 210 S.W. 3rd. STREET BRYANT, AR PHONE: (501) 943-0468	DESCRIPTION: VERTICAL TIE-DOWN BLOCKING	REVISED: _____	
	DRAWN BY: _____	CHECKED BY: _____	FILE: W17-Vertical Tie-Down Blocking.dwg	

- NOTES:
1. WATER LINE MARKERS SHALL BE TRI-VIEW MARKING SYSTEM BY RHINO MARKING AND PROTECTION SYSTEMS OR CARSONITE INTERNATIONAL DUAL-SIDED UTILITY MARKER (CIB-380).
 2. THE UPPERMOST PORTION OF THE CARSONITE MARKER SHALL BE MADE OF VISIBILITY ENHANCER (CVE-360).
 3. TRI-VIEW MARKERS DO NOT REQUIRE VISIBILITY ENHANCERS.
 4. AN ADDITIONAL WHITE 1" WIDE REFLECTIVE TAPE (3M OR EQUAL) SHALL BE PLACED AROUND THE FULL CIRCUMFERENCE OF THE TOP OF THE MARKER.



VALVE MARKER

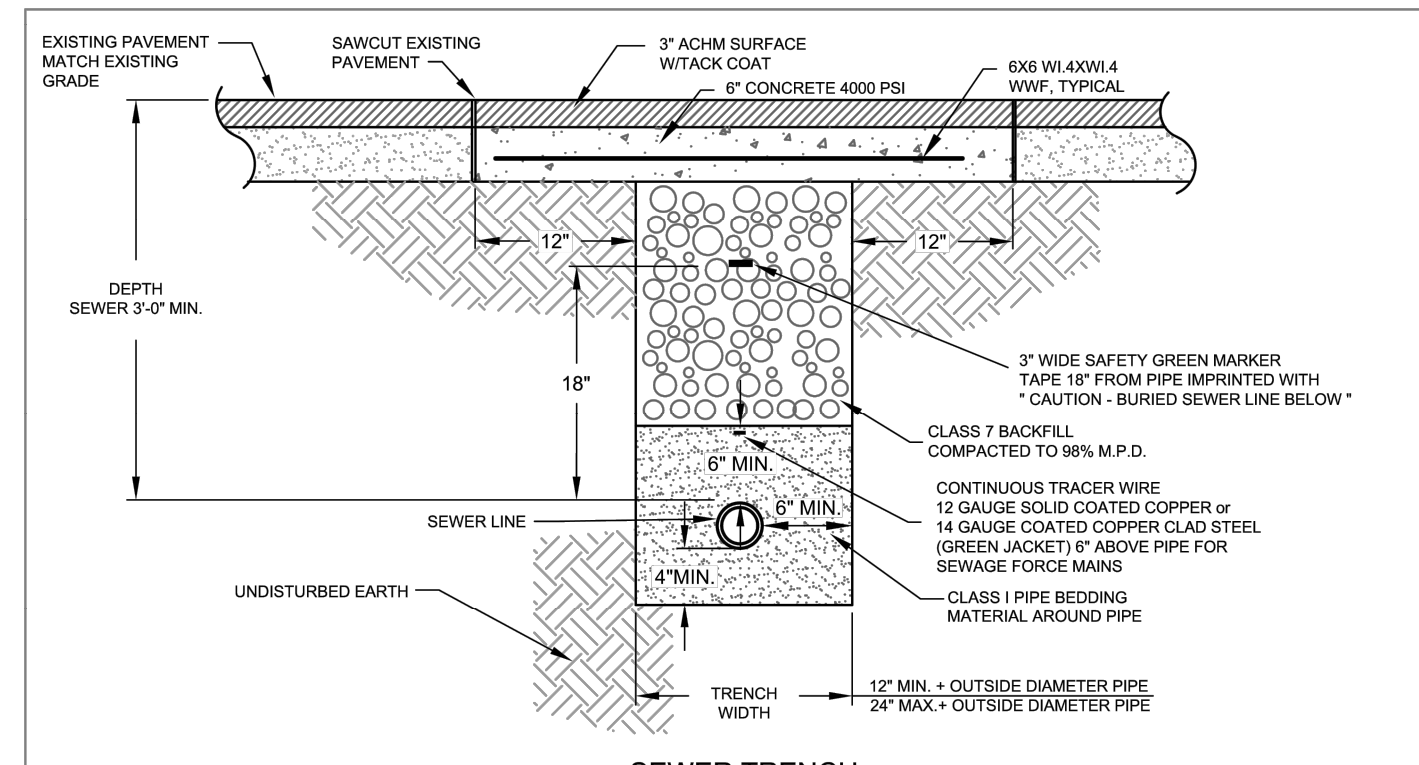
	CITY OF BRYANT, AR	TITLE: WATER DETAILS	DATE: APRIL 2015	SHEET: W22
	WATER UTILITIES 210 S.W. 3rd. STREET BRYANT, AR PHONE: (501) 943-0468	DESCRIPTION: VALVE MARKER	REVISED: _____	
	DRAWN BY: _____	CHECKED BY: _____	FILE: W22-Valve Marker.dwg	



SEWER TRENCH

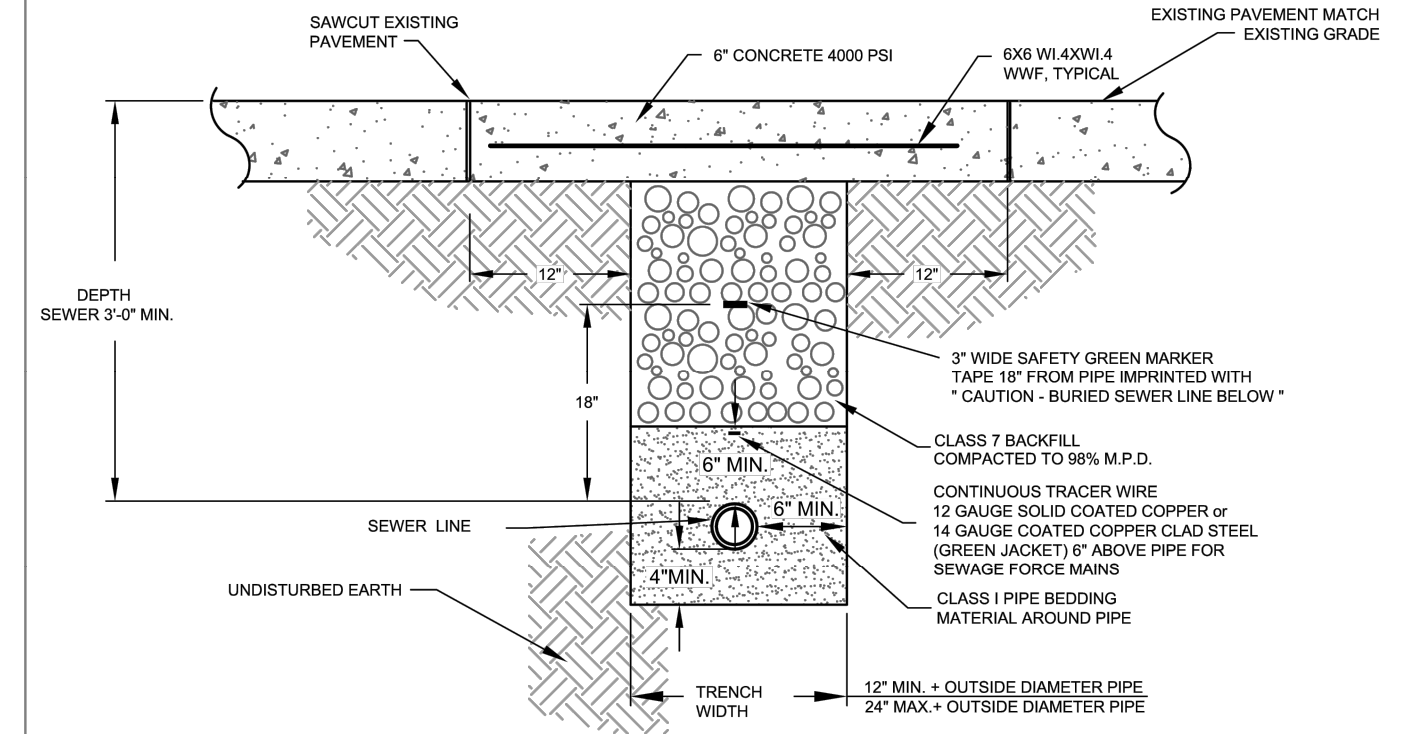
- NOTES:
1. THE CONTRACTOR SHALL PROVIDE ALL ITEMS NECESSARY TO CONNECT WITH ANY PART OF THE EXISTING SEWER SYSTEM THAT WILL REMAIN IN ORDER TO ESTABLISH A SATISFACTORY AND ACCEPTABLE SEWER SYSTEM.
 2. CONTRACTOR TO CONSTRUCT ALL TRENCH EXCAVATION IN ACCORDANCE WITH ALL OSHA REGULATIONS (29 CFR CH.XVII, SUBPART B).
 3. TRENCH SHALL BE EXCAVATED BELOW GRADE REQUIRED TO PROVIDE A MINIMUM 36" OF PIPE COVER.

	CITY OF BRYANT, AR	TITLE: SEWER DETAILS	DATE: APRIL 2015	SHEET: S1
	WATER UTILITIES 210 S.W. 3rd. STREET BRYANT, AR PHONE: (501) 943-0468	DESCRIPTION: SEWER TRENCH (NON-PAVED AREA)	REVISED: _____	
	DRAWN BY: _____	CHECKED BY: _____	FILE: S1-Sewer Trench (Non-Paved Area).dwg	



SEWER TRENCH

(UNDER ASPHALT)



SEWER TRENCH

(UNDER CONCRETE)

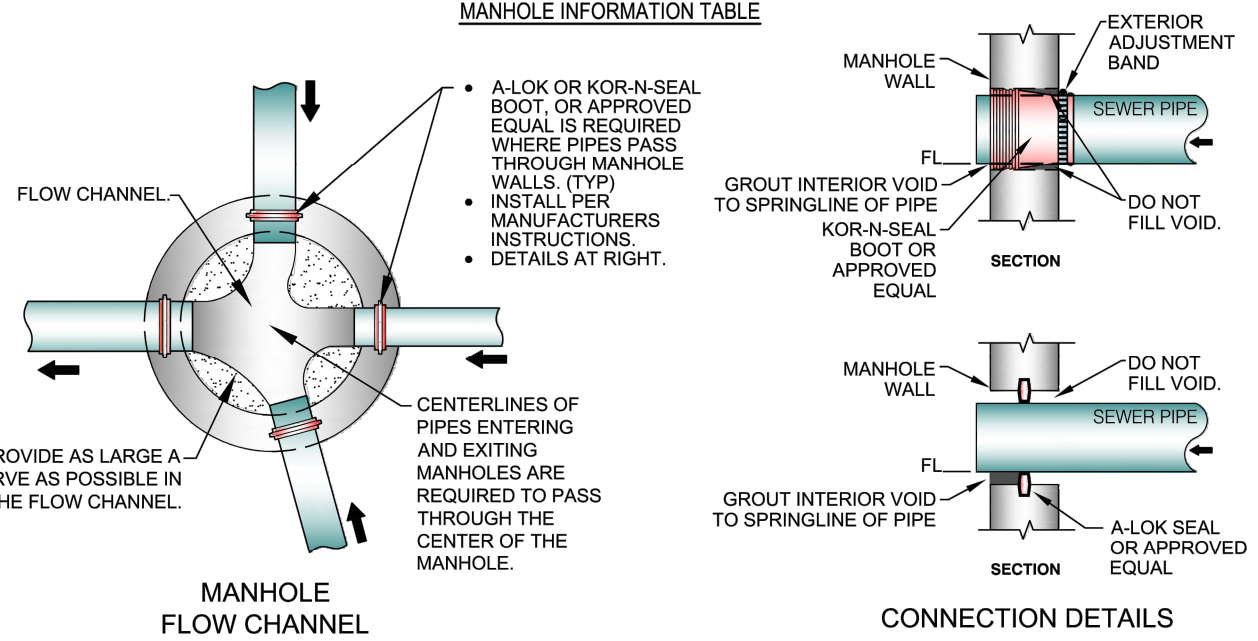
NOTES:

1. THE CONTRACTOR SHALL PROVIDE ALL ITEMS NECESSARY TO CONNECT WITH ANY PART OF THE EXISTING SEWER SYSTEM THAT WILL REMAIN IN ORDER TO ESTABLISH A SATISFACTORY AND ACCEPTABLE SEWER SYSTEM.
2. CONTRACTOR TO CONSTRUCT ALL TRENCH EXCAVATION IN ACCORDANCE WITH ALL OSHA REGULATIONS (29 CFR CH.XVII, SUBPART B).
3. TRENCH SHALL BE EXCAVATED BELOW GRADE REQUIRED TO PROVIDE A MINIMUM 36" OF PIPE COVER.

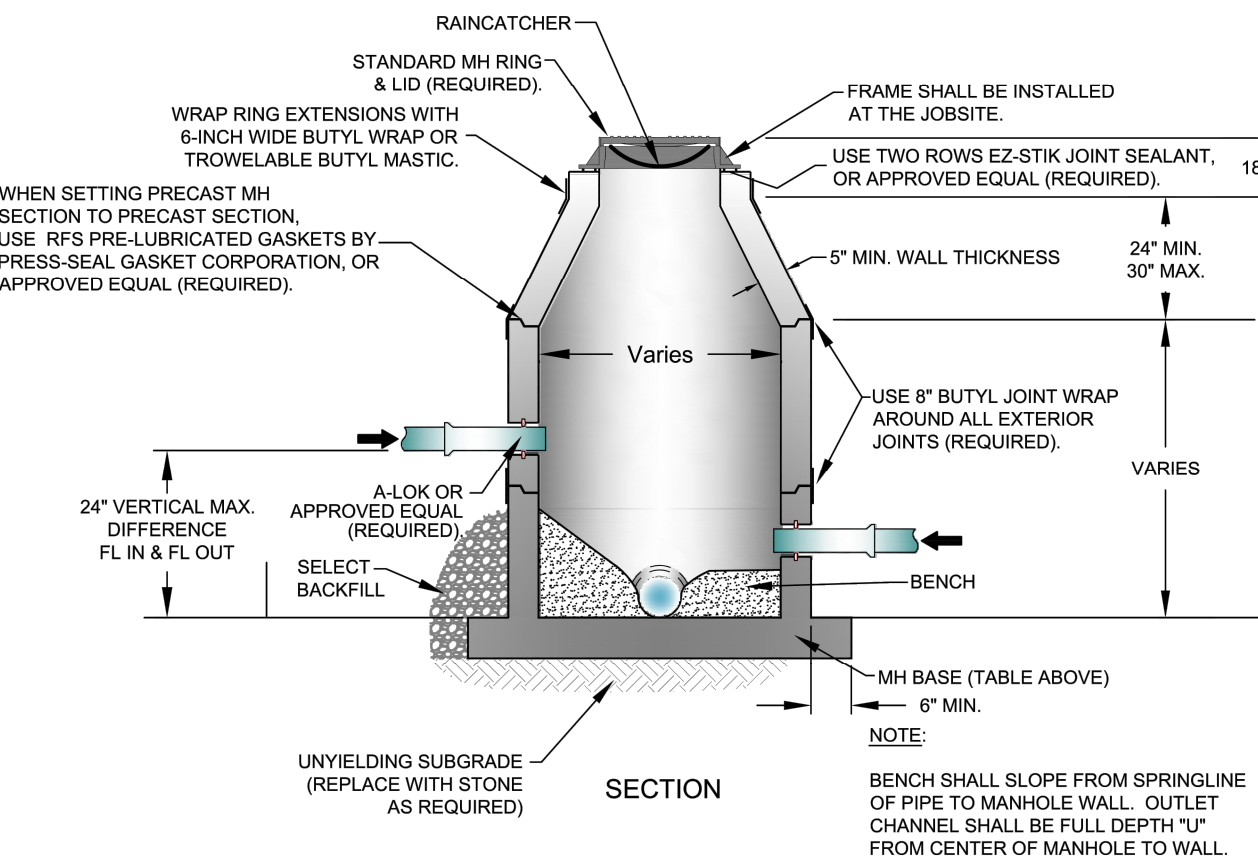
	CITY OF BRYANT, AR	TITLE: SEWER DETAILS	DATE: APRIL 2015	SHEET: S2
	WATER UTILITIES 210 S.W. 3rd. STREET BRYANT, AR PHONE: (501) 943-0468	DESCRIPTION: SEWER TRENCH (UNDER PAVEMENT)	REVISED: _____	
	DRAWN BY: _____	CHECKED BY: _____	FILE: S2-Sewer Trench (Under Pavement).dwg	

Inside Diameter of Manhole	Minimum Wall Thickness	Base Thickness	Minimum Ring & Cover Size
4" DIA	5"	6"	24"
5" DIA	7"	8"	(< or Equal to 24" Pipes)
6" DIA	7"	8"	36"
			(> 24" Pipes)

MANHOLE INFORMATION TABLE

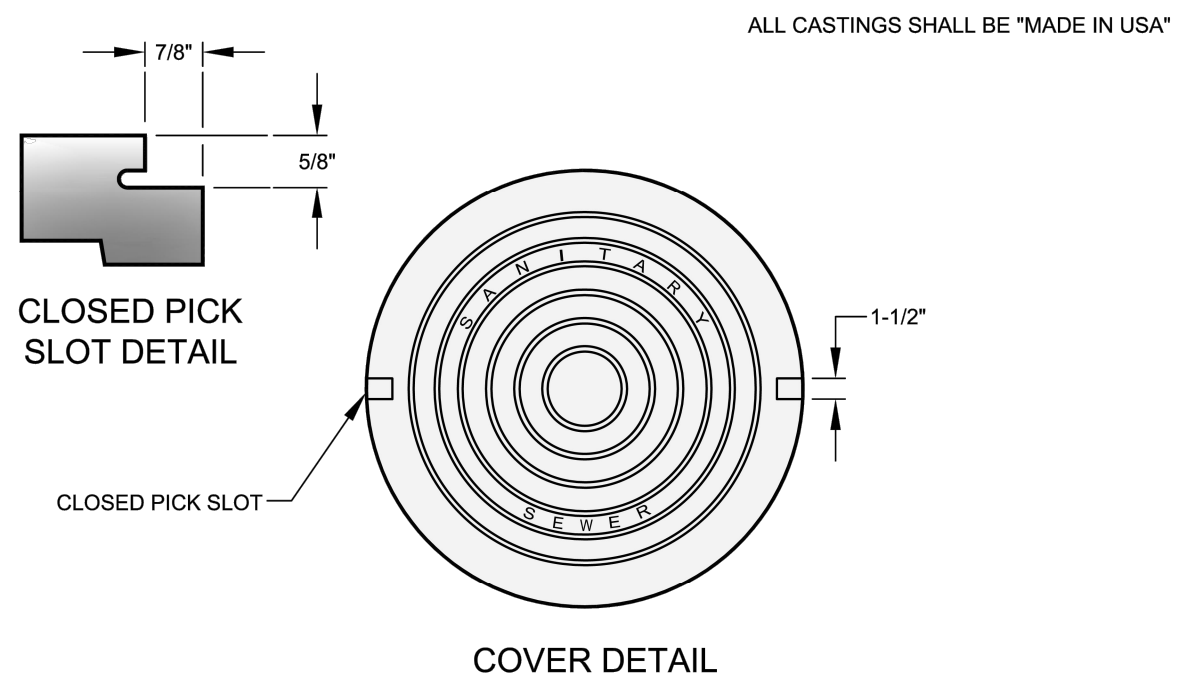


CONNECTION DETAILS



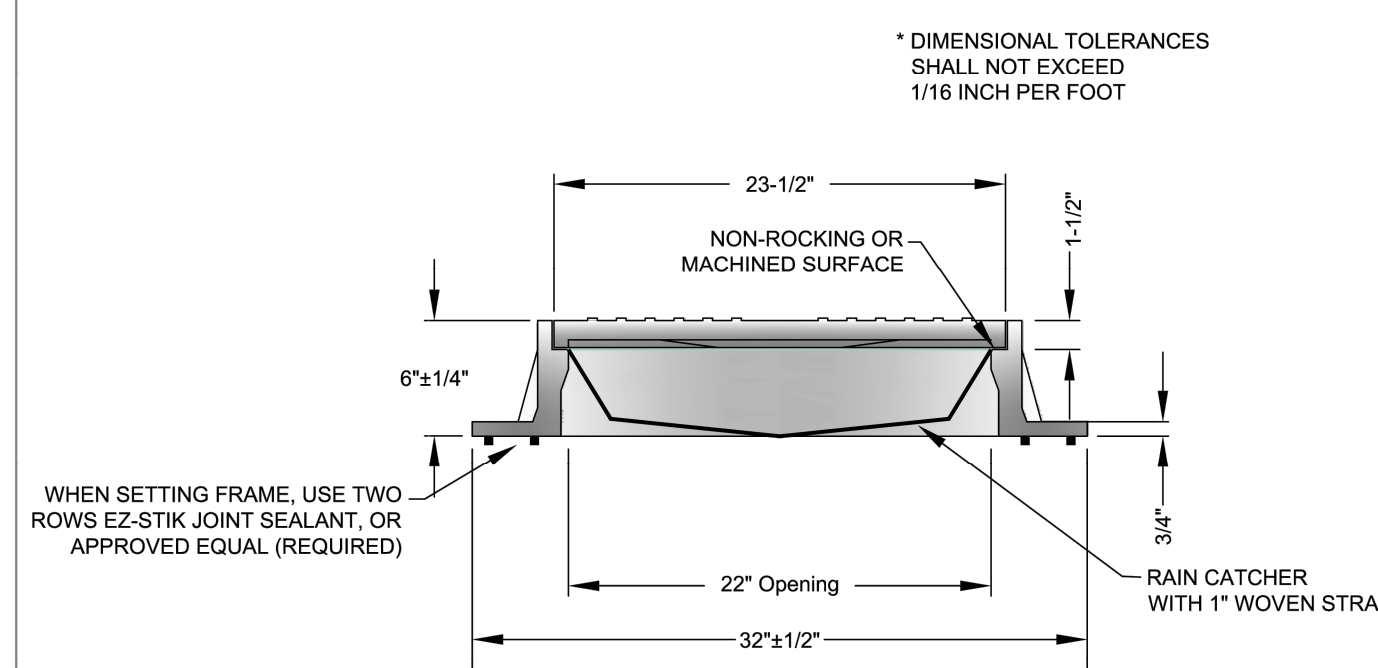
PRECAST MANHOLE

	CITY OF BRYANT, AR	TITLE: SEWER DETAILS	DATE: APRIL 2015	SHEET: S5
	WATER UTILITIES 210 S.W. 3rd. STREET BRYANT, AR PHONE: (501) 943-0468	DESCRIPTION: PRECAST MANHOLE	REVISED: _____	
	DRAWN BY: _____	CHECKED BY: _____	FILE: S5-Precast Manhole.dwg	



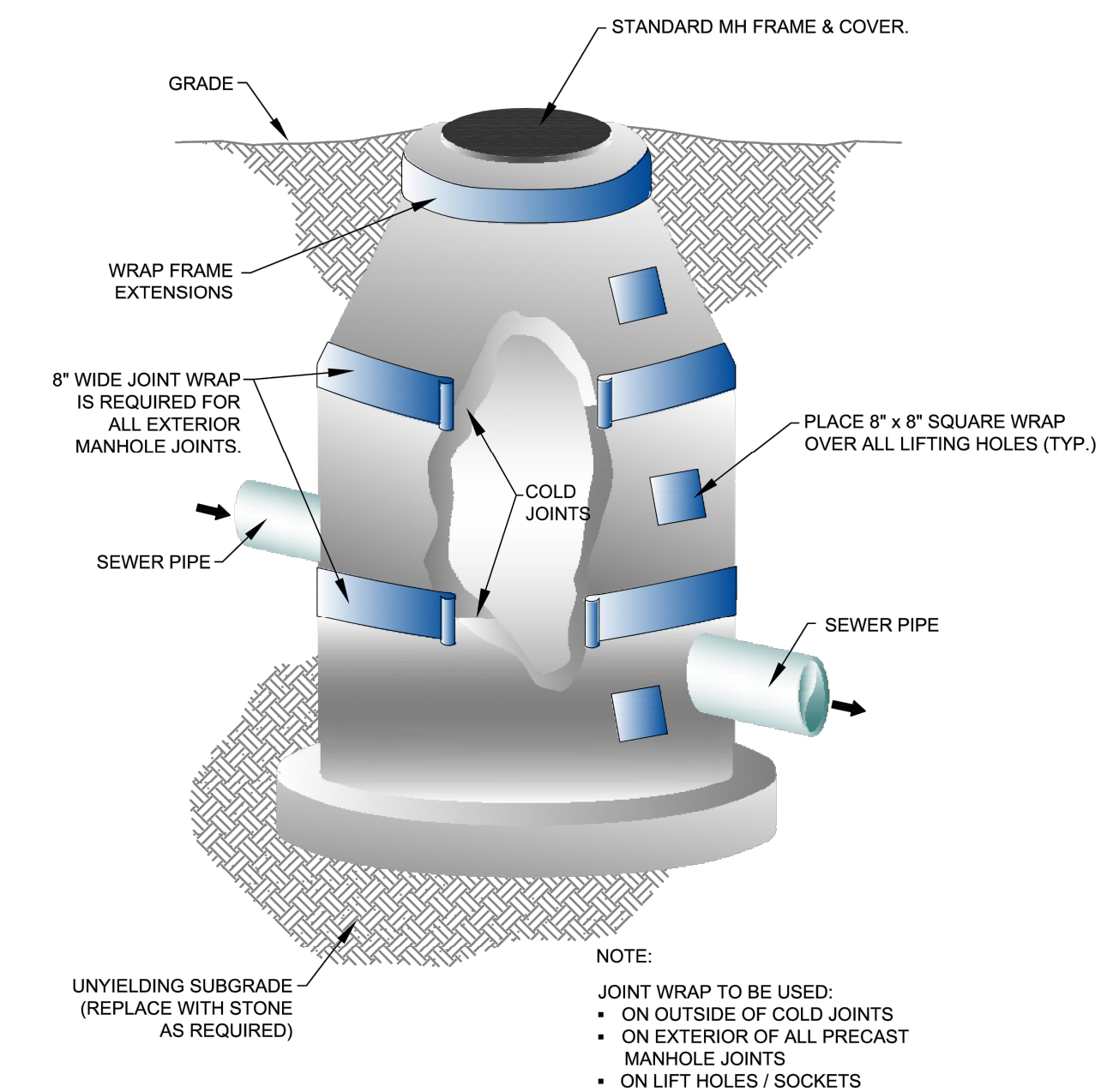
COVER DETAIL

1. MINIMUM WEIGHT OF RING: 100 POUNDS
2. MINIMUM WEIGHT OF COVER: 110 POUNDS
3. COVERS ARE FURNISHED WITH TWO CLOSED PICK SLOTS.
4. CASTINGS SHALL BE "MADE IN USA"



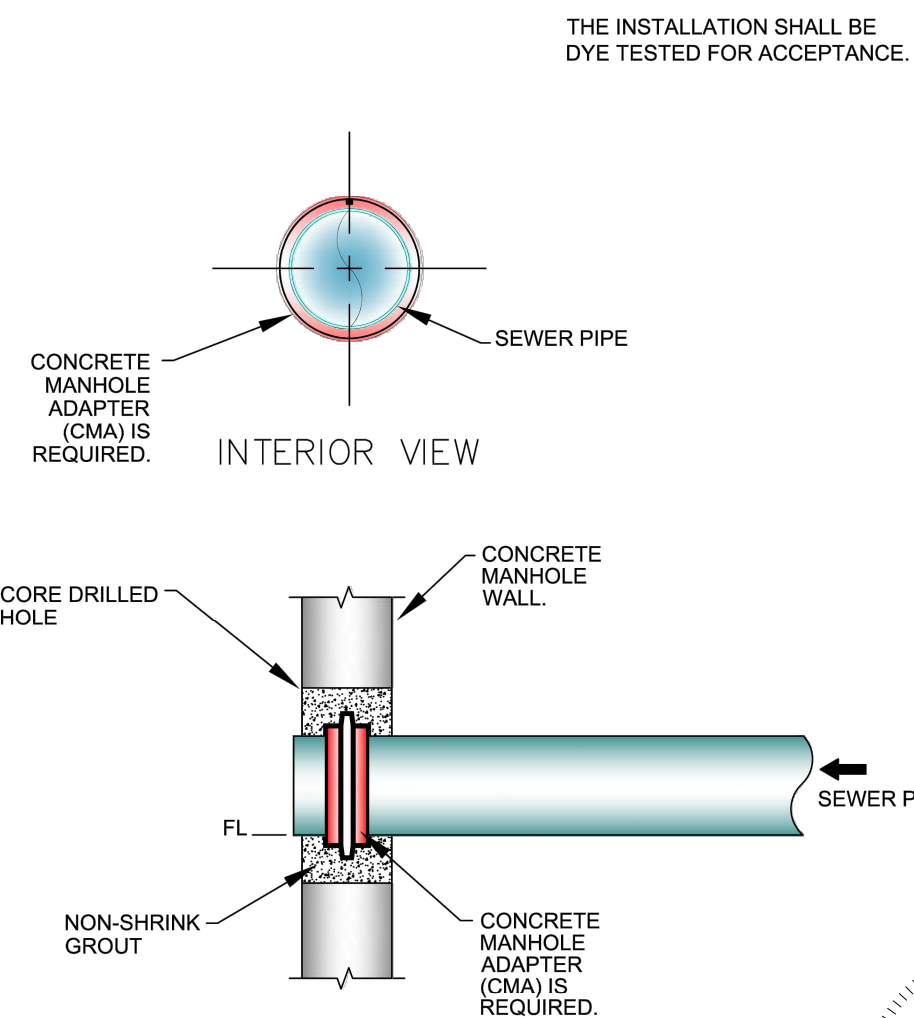
FRAME AND COVER DETAIL

	CITY OF BRYANT, AR	TITLE: SEWER DETAILS	DATE: APRIL 2015	SHEET: S6
	WATER UTILITIES 210 S.W. 3rd. STREET BRYANT, AR PHONE: (501) 943-0468	DESCRIPTION: MANHOLE FRAME AND COVER	REVISED: _____	
	DRAWN BY: _____	CHECKED BY: _____	FILE: S6-Manhole Frame and Cover.dwg	



MANHOLE JOINT WRAP

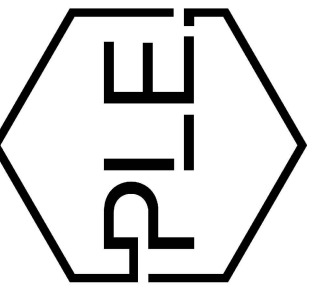
	CITY OF BRYANT, AR	TITLE: SEWER DETAILS	DATE: APRIL 2015	SHEET: S9
	WATER UTILITIES 210 S.W. 3rd. STREET BRYANT, AR PHONE: (501) 943-0468	DESCRIPTION: MANHOLE JOINT WRAP	REVISED: _____	
	DRAWN BY: _____	CHECKED BY: _____	FILE: S9-Manhole Joint Wrapping.dwg	



MANHOLE CORING DETAILS

	CITY OF BRYANT, AR	TITLE: SEWER DETAILS	DATE: APRIL 2015	SHEET: S11
	WATER UTILITIES 210 S.W. 3rd. STREET BRYANT, AR PHONE: (501) 943-0468	DESCRIPTION: MANHOLE CORING	REVISED: _____	
	DRAWN BY: _____	CHECKED BY: _____	FILE: S11-Manhole Coring.dwg	

PHILLIP LEWIS ENGINEERING, INC.
Structural + Civil Consultants



REVISION:

NEW BEGININGS
HIGHWAY 5
BRYANT, ARKANSAS



PROJECT NUMBER:

SHEET ISSUE DATE:
08-06-2025

PAGE TITLE:

UTILITY
DETAILS II

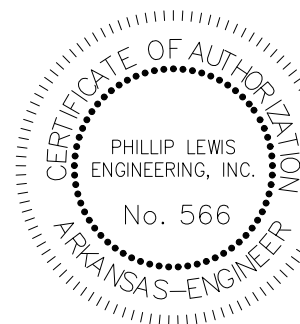
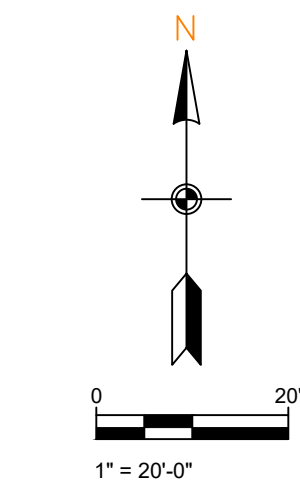
SHEET NUMBER:

C1.9



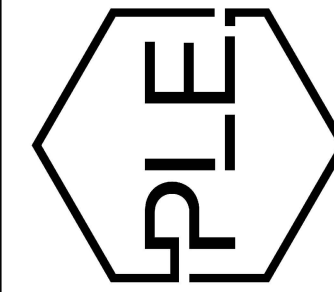
PRE-DEVELOPMENT DRAINAGE BASIN PLAN

SCALE 1" = 20'



NEW BEGININGS
HIGHWAY 5
BRYANT, ARKANSAS

PHILLIP LEWIS ENGINEERING, INC.
Structural + Civil Consultants
23620 Interstate 30 | Bryant, Arkansas
PH: 501-350-9840



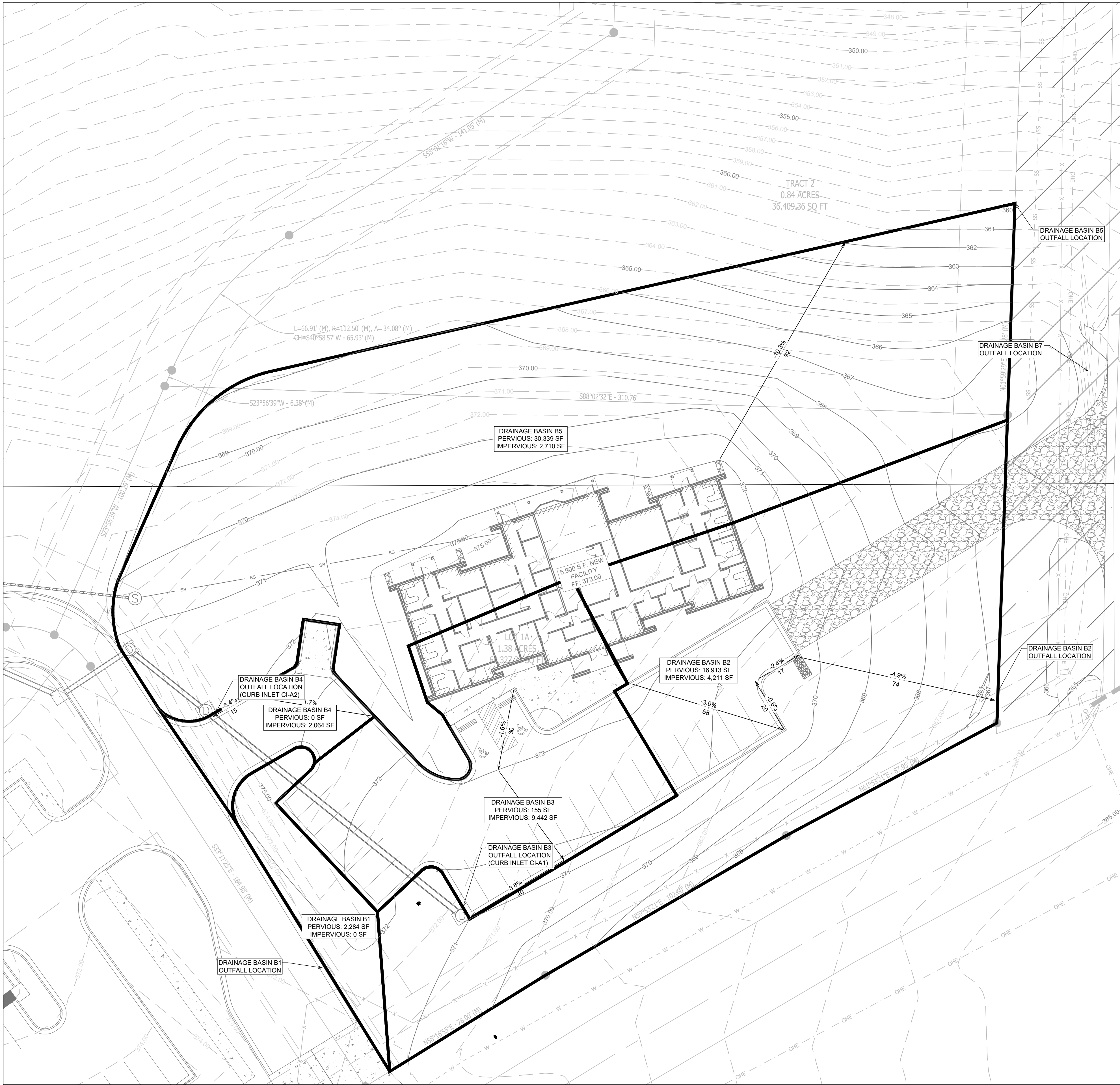
REVISION:

PROJECT NUMBER:

SHEET ISSUE DATE:
08-06-2025

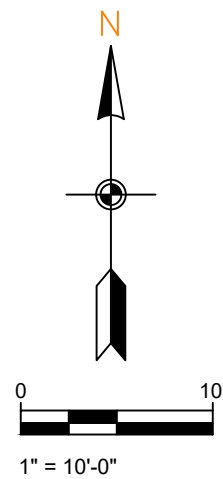
PAGE TITLE:
**PRE-DEV
DRAINAGE**

SHEET NUMBER:
C1.10



POST-DEV DRAINAGE

SCALE 1" = 20'



PHILLIP LEWIS ENGINEERING, INC.
Structural + Civil Consultants
23620 Interstate 30 | Bryant, Arkansas
PH: 501-350-9840



REVISION:

NEW BEGININGS
HIGHWAY 5
BRYANT, ARKANSAS



PROJECT NUMBER:

SHEET ISSUE DATE:
08-06-2025

PAGE TITLE:
POST-DEV
DRAINAGE

SHEET NUMBER:
C1.11



LANDSCAPE PLAN

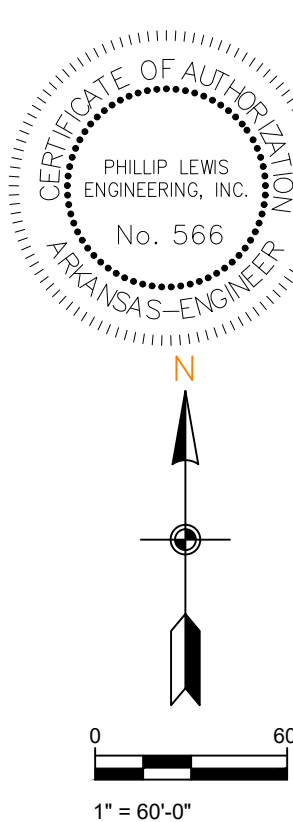
- NOTES:
- LANDSCAPED AREAS TO BE AMENDED WITH 4" OF TOPSOIL. SCARIFY SOIL 3" PRIOR TO APPLICATION. ALL TOP SOIL SHALL BE PLACED IN COORDINATION WITH GRADING AND DRAINAGE PLANS TO ENSURE THAT THE GRADING AND DRAINAGE DESIGN FOR THE SITE IS MAINTAINED AFTER BEING SODDED OR SEEDED. EXISTING SOIL FROM THE SITE CAN BE STOCK PILED AND REUSED AS LONG AS IT IS OF QUALITY THAT ENCOURAGES ADEQUATE GROWTH OF PLANTING MATERIAL. THE CONTRACTOR IS RESPONSIBLE FOR ANY SOIL TESTING THAT MAY BE REQUIRED.
 - LANDSCAPE PLAN REPRESENTS RECOMMENDED SPECIES, SIZES, & LOCATIONS. OWNER SHALL CHANGE THE ITEMS TO EQUAL OR GREATER VALUE.

SCALE 1" = 60'

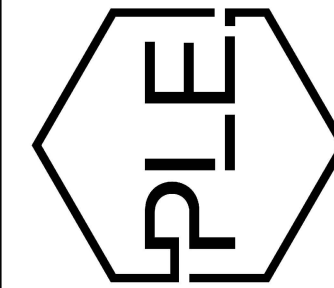
GENERAL CONSTRUCTION NOTES

- A. THE CONTRACTOR WILL BE HELD SOLELY RESPONSIBLE FOR DAMAGES OCCURRING TO ANY PROPERTY DURING THE CONSTRUCTION OF THIS PROJECT. SAID CONTRACTOR SHALL TAKE ALL NECESSARY PRECAUTIONS TO PREVENT PROPERTY DAMAGE.
- B. IN ACCORDANCE WITH GENERALLY ACCEPTED CONSTRUCTION PRACTICES, THE CONTRACTOR WILL SOLELY AND COMPLETELY BE RESPONSIBLE FOR CONDITIONS OF THE JOB SITE, INCLUDING SAFETY WORK. THIS REQUIREMENT WILL APPLY CONTINUOUSLY AND WILL NOT BE LIMITED TO NORMAL WORKING HOURS.
- THE DUTY OF BRYANT TO CONDUCT CONSTRUCTION INSPECTION REVIEWS OF THE CONTRACTOR'S PERFORMANCE IS NOT AN INSPECTION OR REVIEW OF THE ADEQUACY OF THE CONTRACTOR'S SAFETY MEASURES IN, ON, OR NEAR THE CONSTRUCTION SITE.
- C. ALL WATER AND SEWER IMPROVEMENTS SHALL BE CONSTRUCTED IN ACCORDANCE WITH THE LATEST REVISION TO THE CITY OF BRYANT'S WATER AND WASTEWATER (SANITARY SEWER) STANDARD SPECIFICATIONS.
- D. THE CONTRACTOR IS SPECIFICALLY CAUTIONED THAT THE LOCATION AND/OR ELEVATION OF EXISTING UTILITIES AS SHOWN ON THESE PLANS IS BASED ON RECORDS OF THE VARIOUS UTILITY COMPANIES AND, WHERE POSSIBLE, MEASUREMENTS TAKEN IN THE FIELD. THE INFORMATION IS NOT TO BE RELIED ON AS BEING EXACT OR COMPLETE. THE CONTRACTOR MUST CALL THE APPROPRIATE UTILITY COMPANY AT LEAST 48 HOURS BEFORE ANY EXCAVATION TO REQUEST EXACT FIELD LOCATION OF ALL UTILITIES. IT SHALL BE THE RESPONSIBILITY OF THE CONTRACTOR TO LOCATE ALL EXISTING UTILITIES WHICH CONFLICT WITH PROPOSED IMPROVEMENTS SHOWN ON THE PLAN.
- E. CONTRACTOR IS TO REMOVE AND DISPOSE OF ALL DEBRIS, RUBBISH, AND OTHER MATERIALS RESULTING FROM PREVIOUS AND CURRENT DEMOLITION OPERATIONS. DISPOSAL WILL BE IN ACCORDANCE WITH ALL LOCAL, STATE AND/OR FEDERAL REGULATIONS GOVERNING SUCH OPERATIONS.
- F. PRIOR TO INSTALLATION OF ANY UTILITIES, THE CONTRACTOR IS TO EXCAVATE, VERIFY AND CALCULATE ALL CROSSINGS AND INFORM ANY AND ALL UTILITIES OF ANY CONFLICTS PRIOR TO CONSTRUCTION.
- G. CONSTRUCTION SHALL NOT START ON ANY WATER UTILITY TIE-INS UNTIL APPROVAL IS GIVEN BY BRYANT WATER. SAID CONTRACTOR SHALL NOT OPERATE ANY VALVE, HYDRANT, OR WATER UTILITY APPURTENANCE NOR SHALL HE ATTACH TO OR TAP ANY WATER UTILITY MAIN WITHOUT APPROVAL. THE CONTRACTOR SHALL BEAR THE COST AND CONSEQUENCE OF ANY DISRUPTION OF UTILITY OPERATION CAUSED BY CONSTRUCTION.
- H. FIBER OPTIC CABLE ON AND/OR ADJACENT TO THIS SITE WERE NOT LOCATED BY THE SURVEY AND ARE NOT SHOWN. IT IS THE RESPONSIBILITY OF THE CONTRACTOR TO LOCATE ANY FIBER OPTIC CABLES ASSOCIATED WITH THIS SITE AND TAKE ALL NECESSARY AND REQUIRED PRECAUTIONS TO PROTECT ANY EXISTING FIBER OPTIC CABLES. CONTRACTORS SHALL COORDINATE ALL EFFORTS WITH OWNER OF FIBER OPTIC CABLES OR THEIR DESIGNATED REPRESENTATIVE.
- J. THE CONTRACTOR IS RESPONSIBLE FOR CONTACTING "ONECALL" SERVICE TO MARK ALL UTILITIES PRIOR TO ANY DEMOLITION, EARTHWORK, OR UTILITY WORK ON THIS SITE.

PLANT SCHEDULE						
PLANT TYPE	SYMBOL	CODE	QTY	COMMON SPECIES	SCIENTIFIC NAME	CAL / SIZE
TREES		WO	6	WILLOW OAK	QUERCUS PHellos	MIN. 3" DIAMETER @ BASE AND 12' TALL
SHRUBS		BW	40	DWARF NANDINA	N. DOMESTICA "HARBOUR DWARF"	3 GAL
GROUND COVER		SO	25,587 SF	BERMUDA SOD		
		GS	24,140 SF	GRASS SEED		
			1,828 SF	LANDSCAPE BEDDING (TBD BY OWNER)		



PHILLIP LEWIS ENGINEERING, INC.
Structural + Civil Consultants
23620 Interstate 30 | Bryant, Arkansas
PH: 501-350-9840

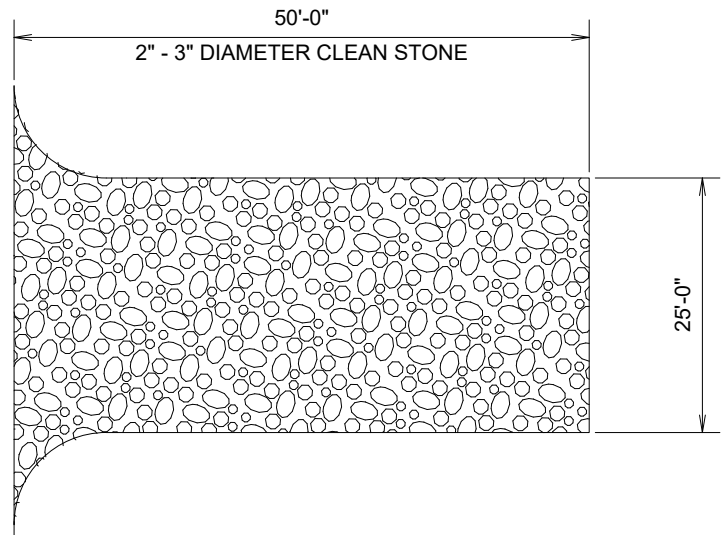
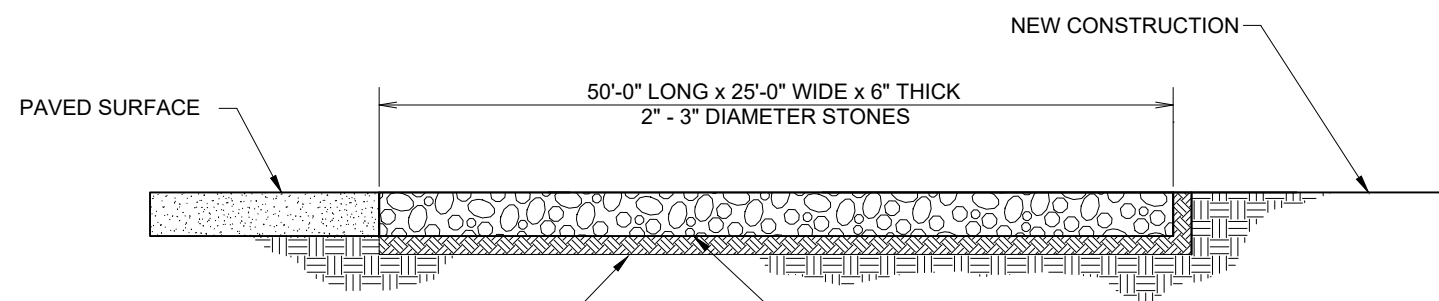


REVISION:



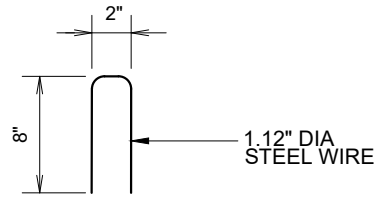
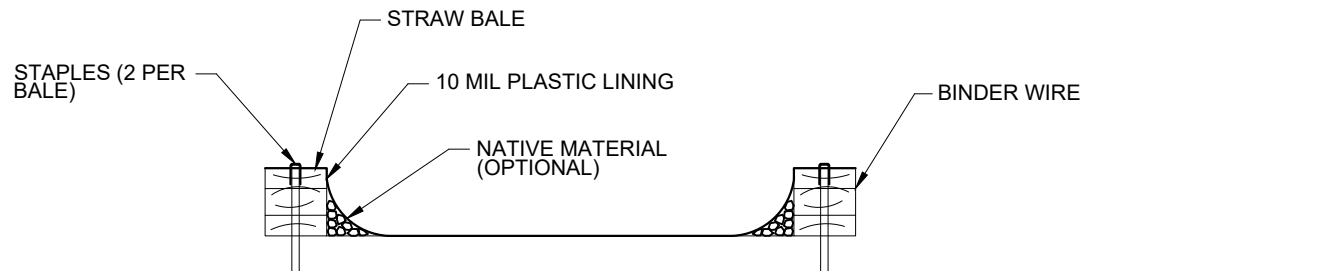
NOTES (GENERAL):

- SEE EROSION CONTROL DETAILS IN SWPPP FOR EROSION CONTROL FACILITIES.
- SEE SWPPP FOR INSTALLATION, MAINTENANCE, INSPECTION, AND RECORD KEEPING REQUIREMENTS.
- CONTRACTOR SHALL SHOW EROSION CONTROL MEASURE ON SITE MAP.
- EROSION AND SEDIMENT CONTROL STRUCTURES TO MEET SWPPP DETAILS - APPENDIX D
- INSTALL ROCK DITCH, CHECK, OR SAND BAG CHECKS AS NECESSARY TO PREVENT SCOUR UNTIL LANDSCAPING IS ESTABLISHED.
- CONTRACTOR MUST PLACE SEDIMENT BASIN WITH SEDIMENT FENCE OUTLET FOR ANY SEDIMENT CONTAMINATED DEWATERING DISCHARGE.
- FINAL SLOPE WILL BE SAME DIRECTION AS EXISTING SLOPE.
- TEMPORARY STABILIZATION PRACTICES WILL NOT BE REQUIRED. WORK WILL BE CONTINUOUS AND DISTURBED AREA REVEGETATED IN A TIMELY MANNER. SEE SWPPP FOR SEEDING MIXES.
- PERMANENT STABILIZATION OF ALL DISTURBED AREAS ARE TO BE SEEDED, FERTILIZED, WATERED AND COVERED WITH STRAW UNLESS OTHERWISE NOTED ON PLANS TO BE HYDROSEEDED.
- CONTRACTOR TO SHOW CONCRETE WASH OUT SUMP, ENTRANCE/EXIT PAD AND OTHER CONTROLS AS REQUIRED/NEEDED AS SWPPP SITE MAP IS UPDATED THROUGHOUT THE DURATION OF THE PROJECT.
- STOCKPILING OF CONSTRUCTION SPOIL MATERIAL AT PARTICULAR LOCATIONS SHALL ONLY BE ALLOWED FOR A LIMITED TIME PERIOD, NOT TO EXCEED (6) MONTHS. PRIOR TO A FINAL INSPECTION OF THE GRADING PERMIT, THE FOLLOWING STANDARDS SHALL BE ACHIEVED FOR COMPLETION OF CONSTRUCTION:
 - DEVELOPMENT AND GRADING WITHIN THE DISTURBED AREA IS COMPLETE AND MATCHES PLANS AS APPROVED BY THE PLANNING COMMISSION, AND
 - THE DISTURBED SOIL AREA IS OBSERVED TO HAVE 80% GRASS COVERAGE AND 100% STABILITY, AND
 - NO SLOPES STEEPER THAN A 3:1 PITCH UNLESS OTHERWISE APPROVED IN WRITING BY THE DIRECTOR OF ENGINEERING, AND
 - NOTICE OF VIOLATIONS ISSUED HAVE ALL CORRECTIVE ACTIONS APPROVED WITH AN INSPECTION REPORT SIGNED BY A REPRESENTATIVE OF THE DIRECTOR OF ENGINEERING, AND
 - ALL HEAVY EQUIPMENT, STOCKPILES, AND CONSTRUCTION SITE MATERIALS HAVE BEEN REMOVED FROM THE CONSTRUCTION SITE.

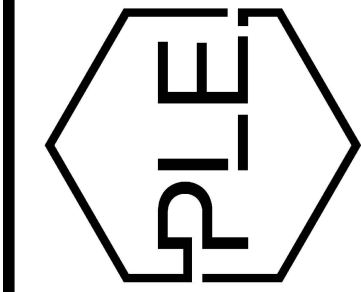
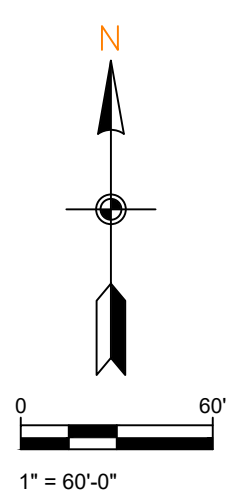
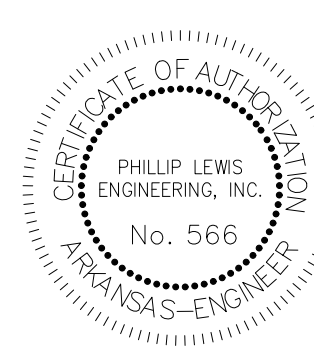


CONSTRUCTION ENTRANCE

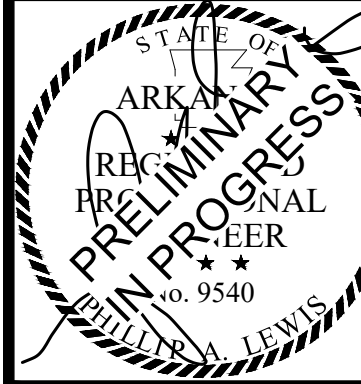
NOT TO SCALE



STAPLE DETAIL



REVISION:



PROJECT NUMBER:

SHEET ISSUE DATE:
08-06-2025

PAGE TITLE:

SWPPP

SHEET NUMBER:
C1.13