

FRONT ELEVATION-% OF AREA MATERIALS LISTED

1. TOP-CHARCOAL COLOR -METAL PANELS WITH SINE WAVE=2,336 SF
2. RED COLOR -FLUSH METAL PANELS =1,394 SF
3. BLUE COLOR- GLASS AND DOORS=308 SF
4. DARK GRAY COLOR - EIFS TYPE STUCCO=1,472 SF
5. BASE-CHARCOAL COLOR -SPLIT FACE BLOCK=544 SF

TOTAL SF FRONT ELEVATION=6,054 SF
 CHARCOAL COLOR SINE WAVE METAL =38.5% OF AREA
 RED COLOR FLUSH METAL PANEL= 23% OF AREA
 GLASS= 5.0% OF AREA

SIDE ELEVATIONS -% OF AREA MATERIALS LISTED
 EAST AND WEST ELEVATIONS ARE IDENTICAL BUT MIRRORED

1. TOP-CHARCOAL COLOR -METAL PANELS WITH SINE WAVE=1,771 SF
2. RED COLOR -FLUSH METAL PANELS = 1,020 SF
3. LIGHT GRAY COLOR - EIFS TYPE STUCCO= 1,326 SF
4. BASE-CHARCOAL COLOR -SPLIT FACE BLOCK= 452 SF

TOTAL SF SIDE ELEVATION=4,569 SF
 TOP-CHARCOAL SINE WAVE METAL =38% OF AREA
 RED COLOR FLUSH METAL PANEL = 22.3% OF AREA

EXTERIOR MATERIALS LISTED FROM TOP OF BUILDING TO FLOOR-ALL METAL SIDING HAS CONCEALED FASTENERS

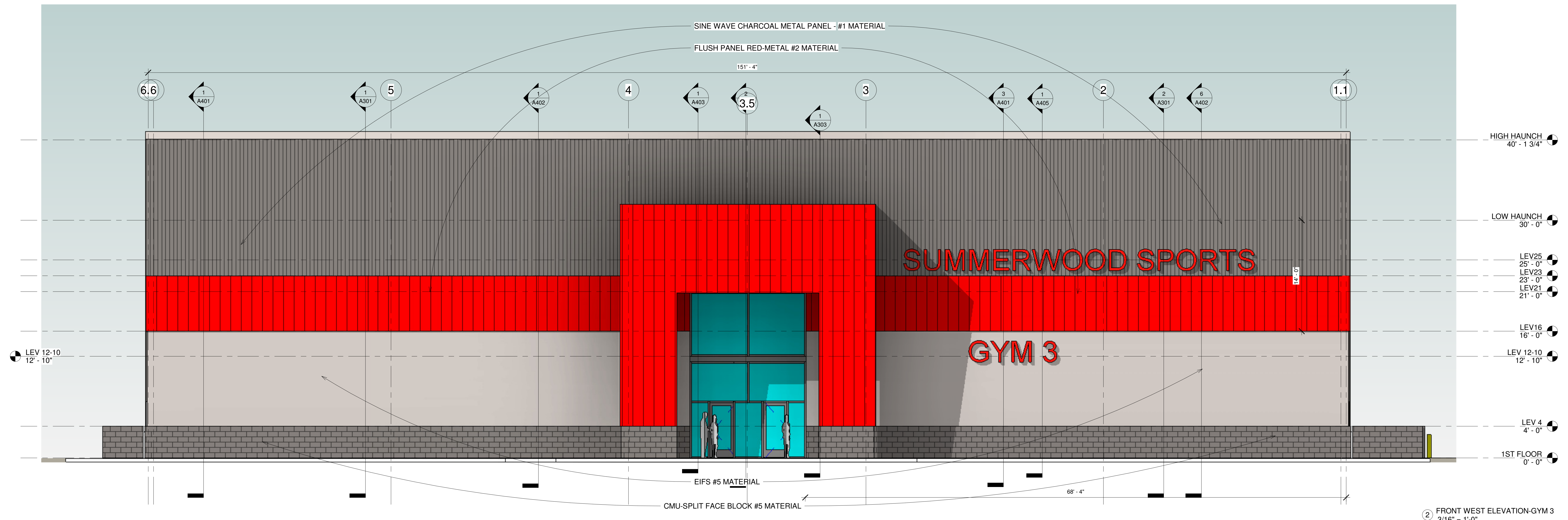
1. TOP-CHARCOAL COLOR -METAL PANELS WITH SINE WAVE AND W/CONCEALED FASTENERS AT TOP OF WALL
2. RED COLOR WALL STRIPE -FLUSH METAL PANELS W/CONCEALED FASTENERS AT 16' TO 23' ABOVE FLR.
3. RED COLOR AT COVERED ENTRY FEATURES-FLUSH METAL PANELS W/CONCEALED FASTENERS
4. BLUE COLOR=INSULATED GLASS AND STOREFRONT TYPE DOORS
5. LIGHT GRAY COLOR - EIFS TYPE STUCCO-FROM 4'-0" TO 16' ABOVE FLR.
6. BASE-CHARCOAL COLOR -SPLIT FACE BLOCK AT BASE OF WALL TO 4'-0" ABOVE FLR.
7. LIGHT GRAY COLOR-PAINTED METAL EXIT DOORS

REAR ELEVATION -% OF AREA MATERIALS LISTED

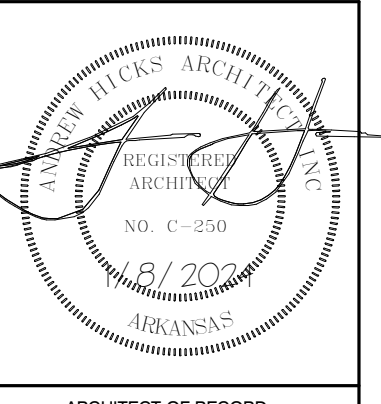
RECESSED MATERIALS ARE COUNTED AS SF- SEE OTHER SHEET FOR REAR ELEVATION

1. TOP-CHARCOAL COLOR -METAL PANELS WITH SINE WAVE= 2,013 SF
2. DARK GRAY COLOR - EIFS TYPE STUCCO= 2,098 SF
3. BASE-CHARCOAL COLOR -SPLIT FACE BLOCK= 456 SF

TOTAL SF REAR ELEVATION=4,567 SF
 TOP-CHARCOAL SINE WAVE METAL =44 % OF WALL AREA



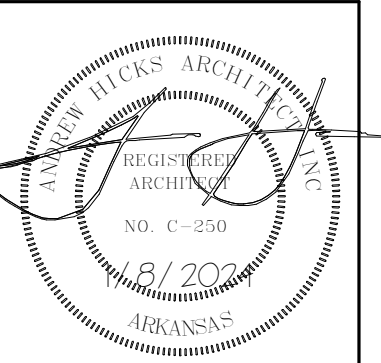
② FRONT WEST ELEVATION-GYM 3
 3/16" = 1'-0"



ARCHITECT OF RECORD
 ANDREW F. HICKS
 FOR SUMMERWOOD PARTNERS
 VERNIA OFFICE PARK, BRYANT PARKWAY
 BRYANT, ARKANSAS

andrew hicks | architect
AHIA
 P.O. BOX 1000
 BRYANT, AR 72015
 P: 501-660-0789
 F: 501-660-0789
 www.andrewhicksarchitect.com

ISSUE DATE: 1/8/2024	
REVISIONS	
NO.	DATE

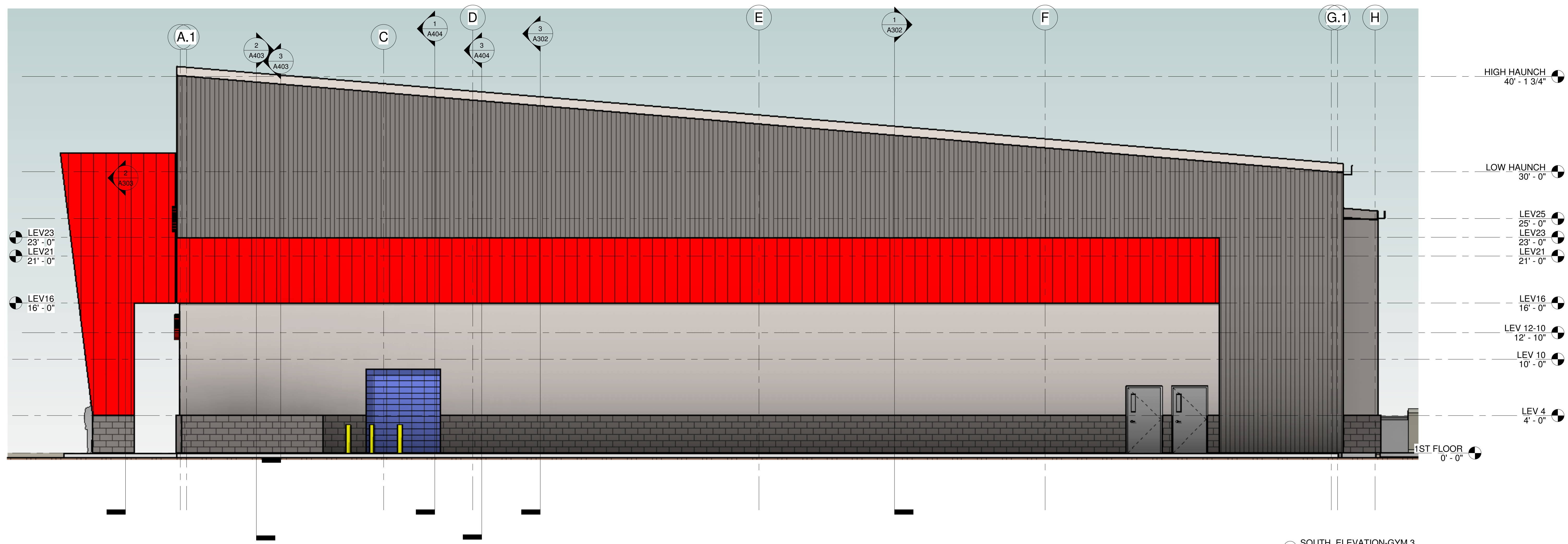


ARCHITECT OF RECORD
ANDREW F. HICKS

FOR SUMMERWOOD PARTNERS
VERNIA OFFICE PARK, BRYANT PARKWAY
BRYANT, ARKANSAS

GYM #3

andrew hicks | architect
AHIA
P.O. BOX 1000
600 N. Mission Blvd.
Fayetteville, AR 72701
PH: 479-332-5050
WWW.ANDREWHICKSARCHITECT.COM



1 SOUTH ELEVATION-GYM 3
3/16" = 1'-0"

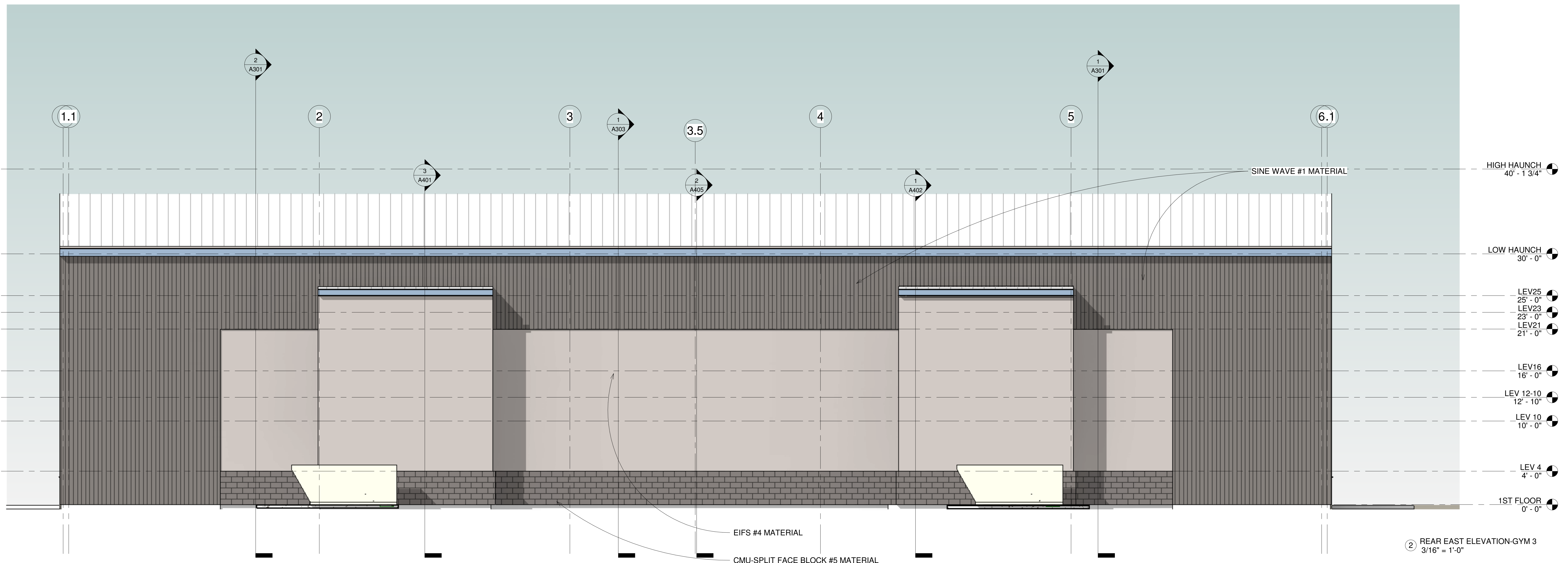
EXTERIOR MATERIALS LISTED FROM TOP OF BUILDING TO FLOOR-ALL METAL SIDING HAS CONCEALED FASTENERS

1. TOP-CHARCOAL COLOR -METAL PANELS WITH SINE WAVE AND W/CONCEALED FASTENERS AT TOP OF WALL
2. RED COLOR WALL STRIPE -FLUSH METAL PANELS W/CONCEALED FASTENERS AT 16' TO 23' ABOVE FLR.
3. RED COLOR AT COVERED ENTRY FEATURES-FLUSH METAL PANELS W/CONCEALED FASTENERS
4. BLUE COLOR=INSULATED GLASS AND STOREFRONT TYPE DOORS
5. LIGHT GRAY COLOR - EIFS TYPE STUCCO-FROM 4'-0" TO 16' ABOVE FLR.
6. BASE-CHARCOAL COLOR -SPLIT FACE BLOCK AT BASE OF WALL TO 4'-0" ABOVE FLR.
7. LIGHT GRAY COLOR-PAINTED METAL EXIT DOORS

**REAR ELEVATION -% OF AREA MATERIALS LISTED
RECESSED MATERIALS ARE COUNTED AS SF**

1. TOP-CHARCOAL COLOR -METAL PANELS WITH SINE WAVE= 2,013 SF
2. DARK GRAY COLOR - EIFS TYPE STUCCO= 2,098 SF
3. BASE-CHARCOAL COLOR -SPLIT FACE BLOCK= 456 SF

TOTAL SF REAR ELEVATION=4,567 SF
TOP-CHARCOAL SINE WAVE METAL =44 % OF WALL AREA



2 REAR EAST ELEVATION-GYM 3
3/16" = 1'-0"

ISSUE DATE: 1/8/2024

REVISIONS	
NO.	DATE

ELEVATIONS-GYM 3

A201