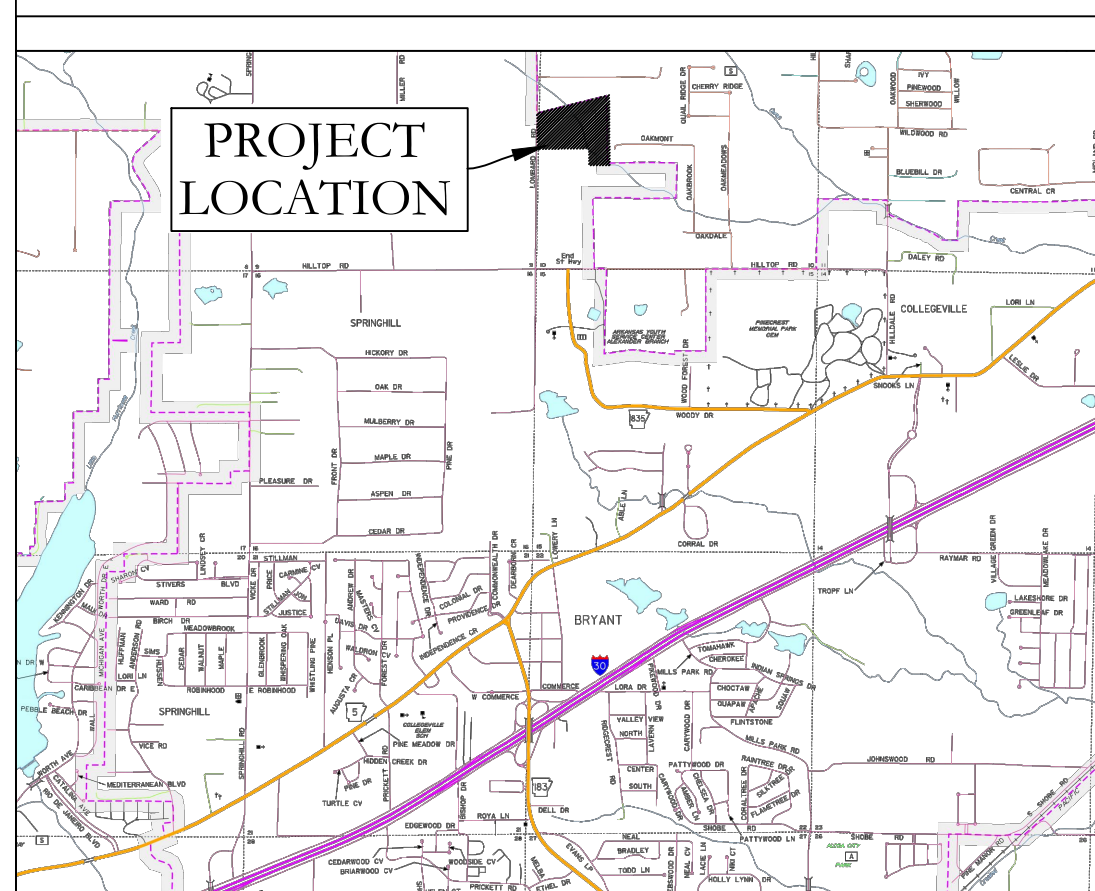


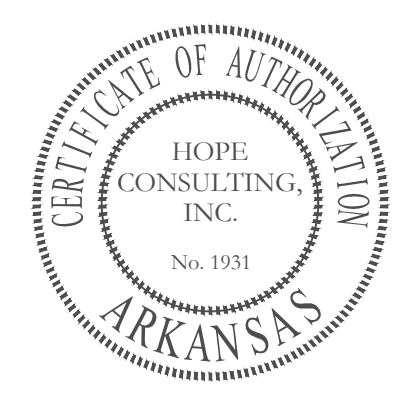
**SANITARY SEWER AND WATER AS-BUILTS
ROMAN HEIGHTS SUBDIVISION PHASE 1
IN THE CITY OF BRYANT, SALINE COUNTY, ARKANSAS**



SEWER LEGEND:	WATER LEGEND:	TYPICAL FIRE HYDRANT:
AIR RELEASE VALVE	3" BLOW OFF	3" BLOW OFF
CLEAN OUT	WATER MAIN	REDUCER
ISOLATION VALVE	REDUCER	6"
SEWER SERVICE	WATER LINE	GATE VALVE
SEWER SERVICE	FIRE HYDRANT	FIRE HYDRANT
	DOUBLE WATER SERVICE	FIRE HYDRANT
	SINGLE WATER SERVICE	FIRE HYDRANT
	GATE VALVE	FIRE HYDRANT

NOTE: PROPOSED SEWER MAINS IS TO HAVE TRACER WIRE. ALSO A NON-BIODEGRADABLE TAPE IDENTIFYING THE LINE AS "SEWER" MUST BE BURIED IN THE TRENCH ABOVE THE SEWER MAINS.

NOTE: ALL FIRE HYDRANT LEADERS HAVE A GATE VALVE BETWEEN MAIN AND FIRE HYDRANT.



HOPE CONSULTING ENGINEERS - SURVEYORS		117 S. Market Street, Benton, Arkansas 72015 PH. (501)315-2626 FAX (501) 315-0024 www.hopeconsulting.com	
FOR USE AND BENEFIT OF: BULL DEVELOPMENT LLC			
WATER & SEWER AS-BUILTS PLAN ROMAN HEIGHTS SUBDIVISION PHASE 1 IN THE CITY OF BRYANT, SALINE COUNTY, ARKANSAS			
DATE:	10/06/2021	C.A.D. BY:	JPP
REVISION:		CHECKED BY:	
500	01S	14W	0 10 300 62 1762
			DRAWING NUMBER: 17-0077

K:\LAND PROJECTS\2021\10\06\2021\17-0077 ROMAN HEIGHTS PHASE 1\17-0077 ROMAN HEIGHTS AS-BUILTS 10-10-21.DWG