

DOUBLE GATE, 48" WIDER THAN DRIVE  
 5' WIDE GATE (PEDESTRIAN), LOCKABLE

10' WIDE DBL. GATE (PEDESTRIAN), LOCKABLE

5' WIDE GATE (PEDESTRIAN), LOCKABLE

TWO (2) 30' WIDE DBL GATES, LOCKABLE

TWO (2) 28' WIDE GATES (POWERED), LOCKABLE

5' WIDE GATE (PEDESTRIAN), LOCKABLE

10' WIDE DBL GATE (PEDESTRIAN), LOCKABLE

THREE (3) 30' WIDE DBL GATE, LOCKABLE

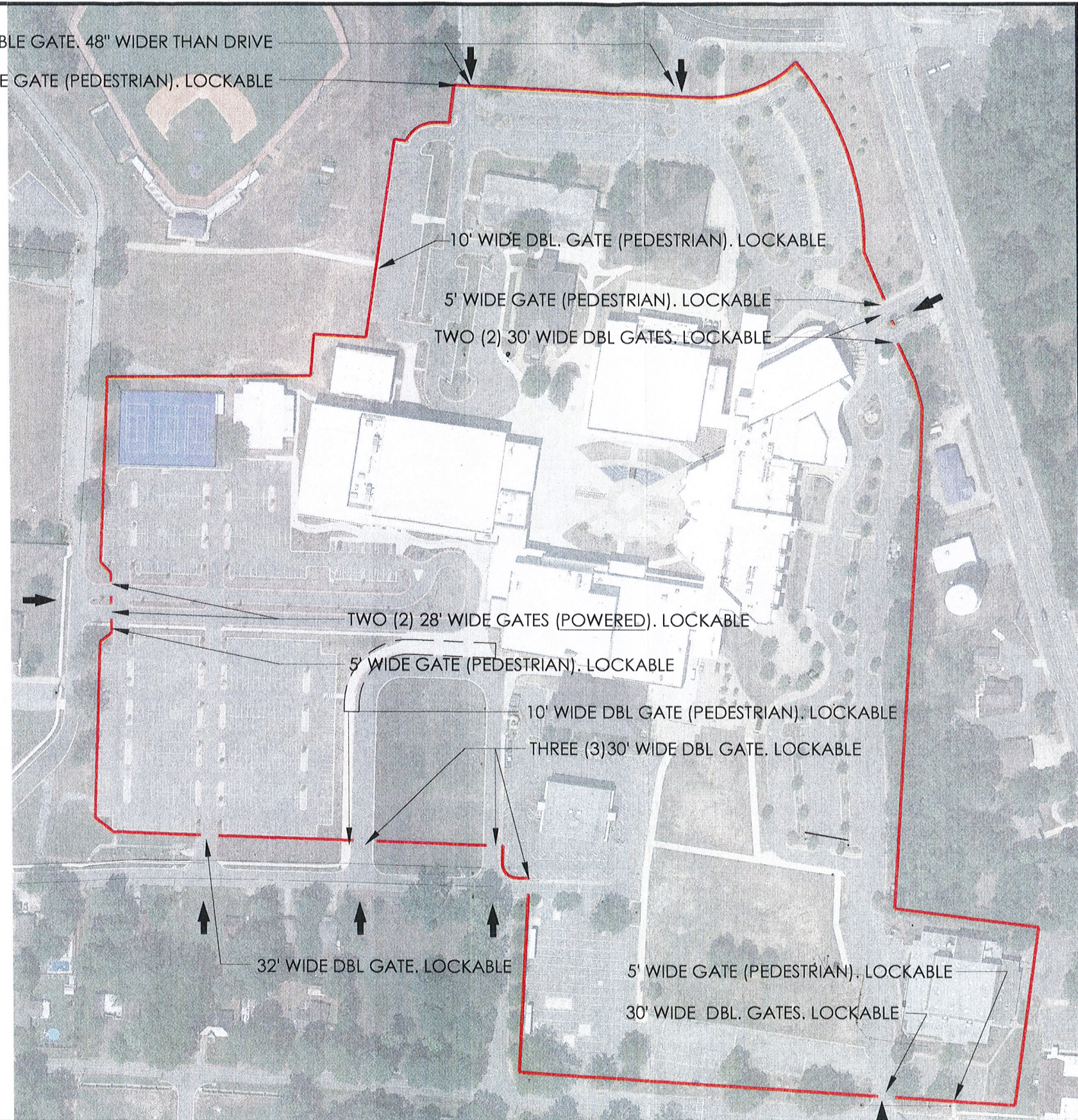
32' WIDE DBL GATE, LOCKABLE

5' WIDE GATE (PEDESTRIAN), LOCKABLE

30' WIDE DBL. GATES, LOCKABLE

**GENERAL NOTES**

1. FIELD VERIFY EXISTING DRIVE WIDTHS FOR VEHICULAR DOUBLE GATE. GATE POSTS SHALL BE INSTALLED APPROXIMATELY 18-24" FROM FACE OF CURB
2. ALL GATES SHALL BE SWINGING GATE LEAVES AND SHALL BE LOCKABLE
3. PROVIDE CONDUIT AND POWER AS REQUIRED FOR TWO POWERED GATES AT THE WEST SIDE OF SITE.



NORTH  
 1  
 A0.1 **SITE PLAN**  
 SCALE: 1" = 200'-0"

**BRYANT HIGH SCHOOL FENCING**

BRYANT SCHOOL DISTRICT  
 BRYANT, ARKANSAS

LEWIS ARCHITECTS ENGINEERS  
 ELLIOTT • McMORRAN • VADEN  
 RAGSDALE • WOODWARD • INCORPORATED  
 501.223.9302 • FAX 501.223.9909 • WWW.LEMVRW.COM

JOB NO. 23038	DATE: 05-26-23	SCALE: SEE DRAWING	DRAWING NO: <b>A0.1</b>
------------------	-------------------	-----------------------	----------------------------