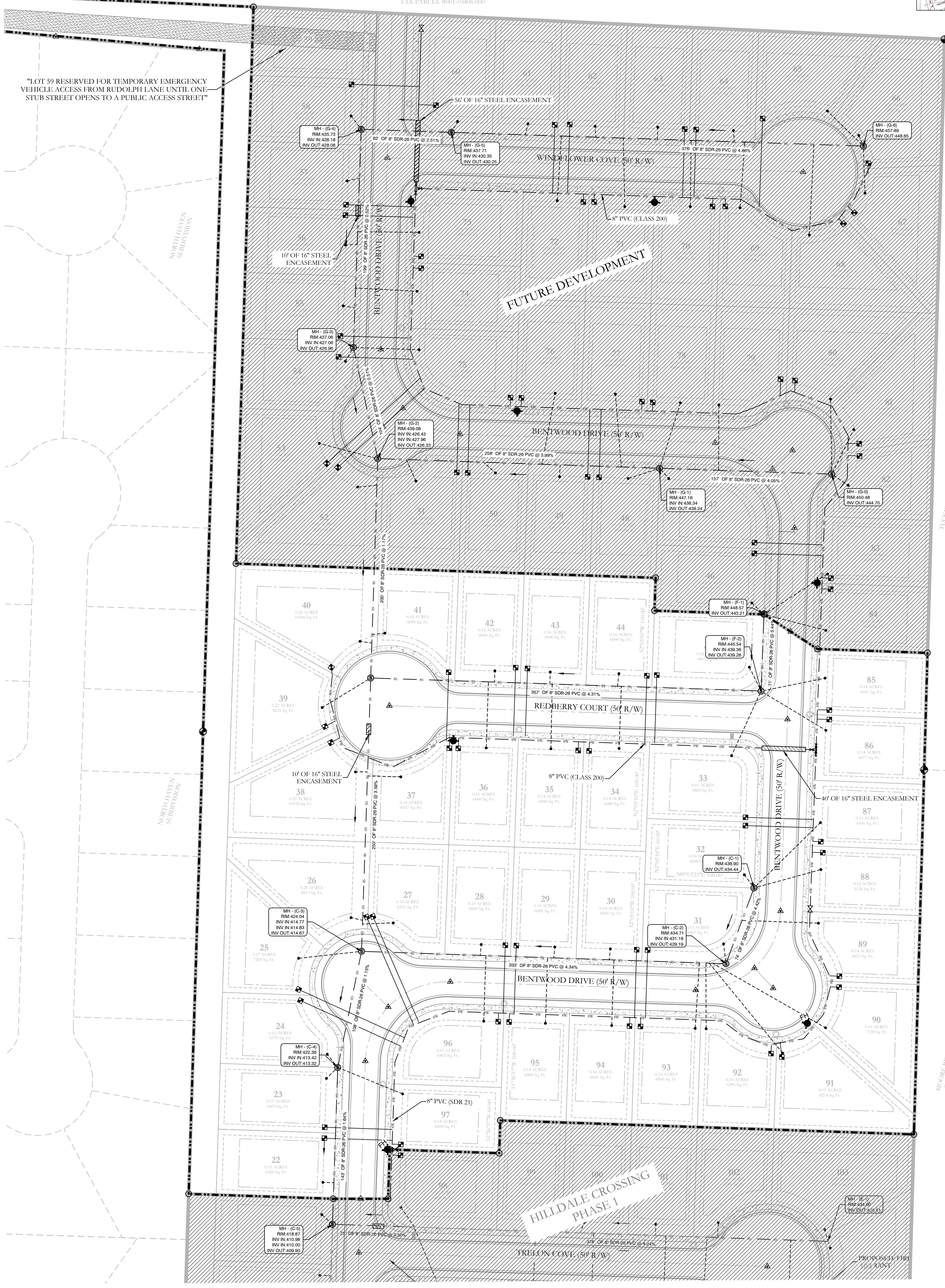


BOSSHART MARGARET
ALANA S & KIMBERLY C
SALINE COUNTY
TAX PARCEL #001-03406-000

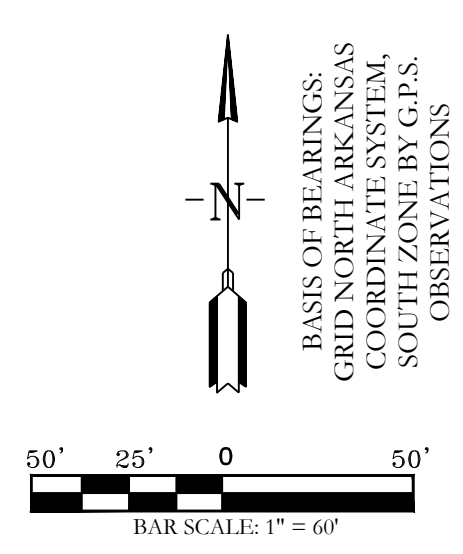


TUGAHI, GREGG & MORGAN
SALINE COUNTY
TAX PARCEL #001-03406-000

MOORE, BILLY GALE
SALINE COUNTY
TAX PARCEL #001-03406-000

SANITARY SEWER AND WATER AS-BUILTS HILLDALE CROSSING PHASE 2

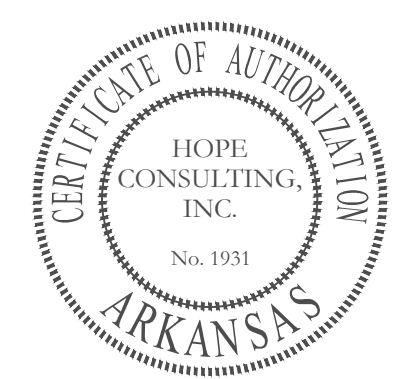
A SUBDIVISION IN SALINE COUNTY, ARKANSAS



SEWER LEGEND:	WATER LEGEND:	TYPICAL FIRE HYDRANT:
AIR RELEASE VALVE	3" BLOW OFF	3" BLOW OFF
CLEAN OUT	GATE VALVE	REDUCER
ISOLATION VALVE	REDUCER	8"
SEWER SERVICE	WATER LINE	8"
SEWER SERVICE	FIRE HYDRANT	GATE VALVE
	DOUBLE WATER SERVICE	FIRE HYDRANT
	SINGLE WATER SERVICE	

NOTE: PROPOSED SEWER MAINS IS TO HAVE TRACER WIRE. ALSO A NON-BIODEGRADABLE TRENCH MARKING THE LINE AS "SEWER" MUST BE PLACED AT LEAST 18" ABOVE THE SEWER MAINS.

NOTE: ALL FIRE HYDRANT LEADERS HAVE A GATE VALVE BETWEEN MAIN AND FIRE HYDRANT.



HOPE CONSULTING
ENGINEERS - SURVEYORS

117 S. Market Street,
Benton, Arkansas 72015
PH. (501)315-2626
FAX (501) 315-0024
www.hopeconsulting.com

FOR USE AND BENEFIT OF:
HAVENS DEVELOPMENT, LLC

**WATER & SEWER AS-BUILTS PLAN
HILLDALE CROSSING PHASE 2**
A SUBDIVISION IN SALINE COUNTY, ARKANSAS

DATE: 05/10/2023	C.A.D. BY: BJOHNSON	DRAWING NUMBER: 20-0169
REVISED:	CHECKED BY:	SCALE: 1"=50'
500	01S	14W 0 03 330 62 1762