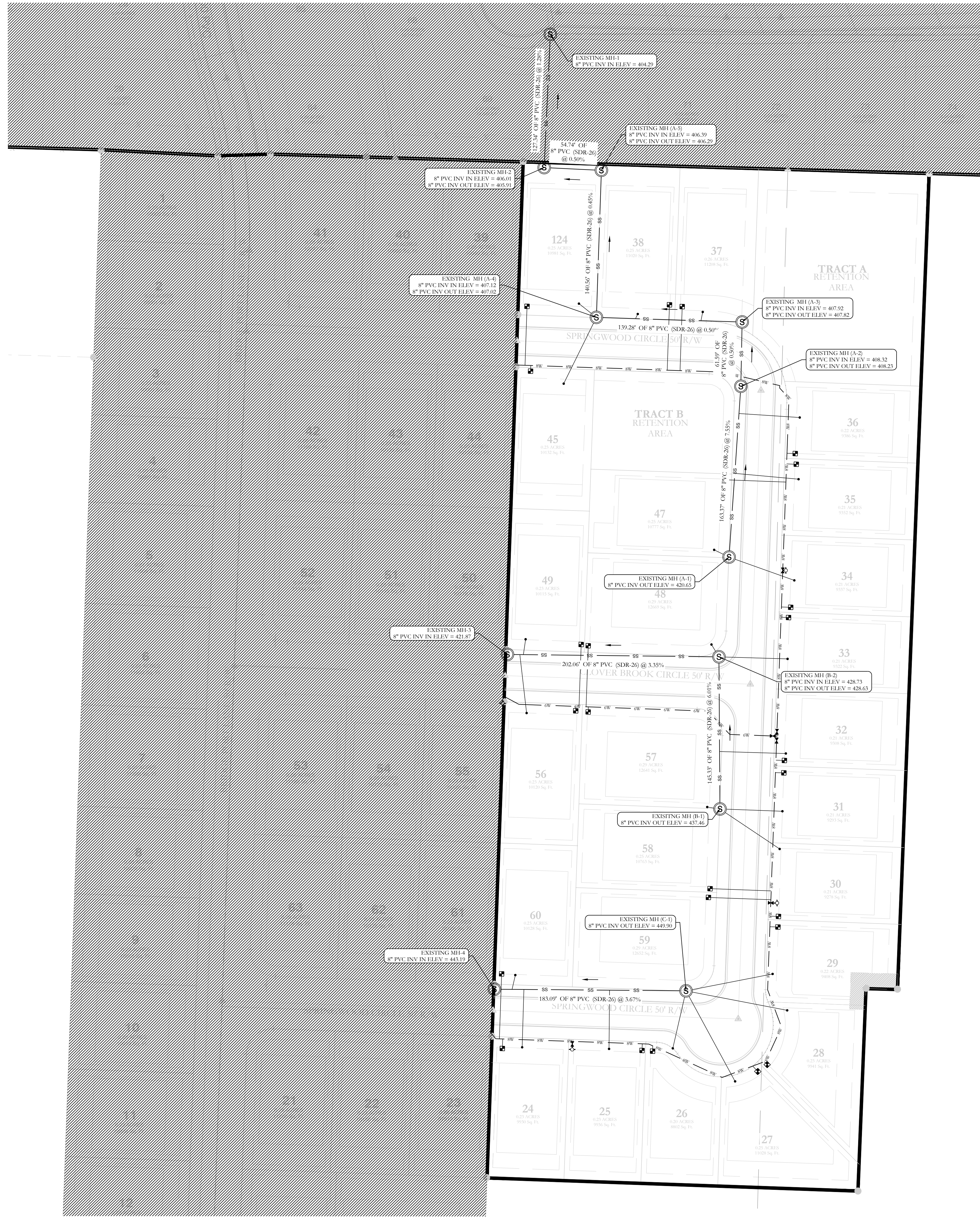




Know what's below.
Call before you dig.



- SEWER CONSTRUCTION NOTES:**
1. ALL SEWER INSTALLATION TO BE IN ACCORDANCE WITH THE CITY OF BRYANT * STANDARD SPECIFICATIONS FOR DESIGN AND CONSTRUCTION OF WATER LINES AND SEWER LINES, 2015 EDITION*
 2. ALL SEWER LINES CROSSING UNDER ALL CONCRETE STORM DRAINS OR ANY STORM DRAIN 30-INCH DIAMETER AND LARGER, OR ALL STORM DRAINS WITH MULTIPLE PIPE RUNS, SHALL BE STEEL ENCASED A MINIMUM OF 5 FEET EITHER SIDE OF THE STORM DRAIN.
 3. FORCE MAIN WILL BE TESTED IN ACCORDANCE WITH BRYANT WATER/WASTEWATER SPECIFICATION SECTION 5200-1.03.A.4
 4. SANITARY SEWER FORCE MAIN SHALL BE INSTALLED IN ACCORDANCE WITH BRYANT WATER/WASTEWATER SPECIFICATIONS.
 5. CONNECTING MANHOLE FROM FORCE MAIN SHALL BE REQUIRED TO BE COATED WITH AN EPOXY COATING ACCORDANCE WITH BRYANT WATER/WASTEWATER SPECIFICATION SECTION 1200-1.07A.1.1

WATER UTILITY NOTES:

ALL NEW 8-INCH AND 6-INCH WATER MAINS TO BE C900 DR 14 PVC

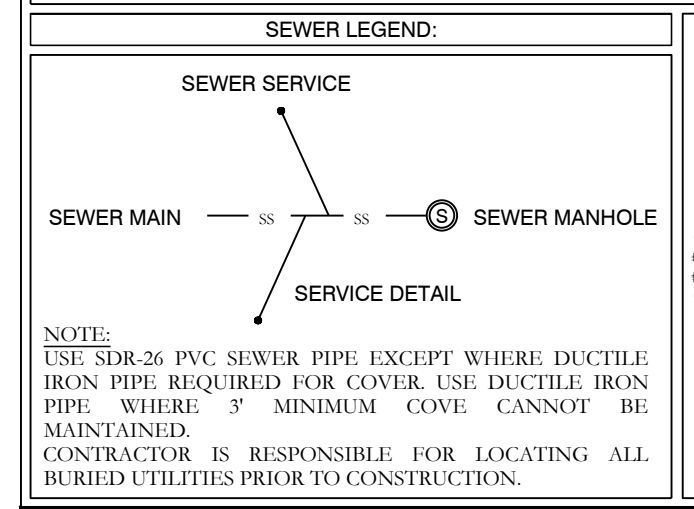
ALL WATER AND SEWER INSTALLATION TO BE IN ACCORDANCE WITH THE CITY OF BRYANT *STANDARD SPECIFICATIONS FOR DESIGN AND CONSTRUCTION OF WATER LINES AND SEWER LINES, 2015 EDITION*

WATER LINES UNDER CULVERTS, CREEKS, CONCRETE CHANNELS, RETAINING WALLS, OR OTHER DIFFICULT AND/OR DANGEROUS TO MAINTAIN AREAS SHALL BE ENCASED IN A SMOOTH STEEL ENCASUREMENT PIPE. THE STEEL ENCASUREMENT SHALL EXTEND FIVE FEET EITHER SIDE OF THE AREA.

EACH WATER SERVICE METER MUST HAVE ITS OWN SERVICE LINE CONNECTION TO THE MAIN (INCLUDES DOUBLE METERS DISPLAYED AS ONE SERVICE LINE ON THE PLAN).

THE SEWER/WATER MAIN CROSSINGS THAT REQUIRE ENCASUREMENT REQUIRE TEN (10) LINEAR FEET OF PIPE ON EITHER SIDE OF THE CROSSING.

ADH RULES PERTAINING TO PUBLIC WATER SYSTEMS NOTES REGARDING CROSS-CONNECTIONS AND SEPARATIONS OF WATER AND SEWER. WATER AND SEWER WILL BE 10 FEET APART IN PARALLEL AND IN THE CASE OF WATER CROSSING SEWER WATER LINE SHOULD BE MINIMUM 18" ABOVE SEWER LINE. AT THE EVENT OF WATER CROSSING BELOW SWER EITHER ONE OF THE PIPE WILL NEED TO BE ENCASED.



HOPE CONSULTING
ENGINEERS + SURVEYORS

129 N. Main Street,
Benton, Arkansas 72015
PH. (501)315-2626
FAX (501)315-0024
www.hopeconsulting.com

FOR USE AND BENEFIT OF:
CYPRESS VALLEY

WATER & SEWER ASBUILTS
CYPRESS VALLEY, PHASE 2
A SUBDIVISION IN THE CITY OF BRYANT, SALINE COUNTY, ARKANSAS

| | | |
|------------------|-----------------|----------------------|
| DATE: 05/10/2023 | C.A.D. BY: | DRAWING NUMBER: |
| REVISED: | CHECKED BY: | 21-0421 |
| SHEET: | SCALE: 1" = 50' | |
| 500 | 01S | 14W 0 10 300 62 1762 |

WATER LEGEND:

| | |
|--|--------------------|
| | DUAL WATER METERS |
| | SINGLE WATER METER |
| | GATE VALVE |
| | 45° FITTING |
| | 90° FITTING |
| | TEE FITTING |
| | CROSS FITTING |
| | FIRE HYDRANT |