

SITE LEGEND:

	FIRE HYDRANT (FHA)
	WATER VALVE
	STORM MANHOLE
	LIGHT POLE
	WATER METER
	SEWER SERVICE CONNECTION
	PROPOSED WATER MAIN
	PROPOSED FORCE SEWER MAIN
	SEWER SERVICE CONNECTION
	WATER SERVICE CONNECTION

PROPERTY SPECIFICATIONS:

ZONING CLASSIFICATION: R-1
 MIN. LOT SIZE: 9982 S.F.
 MAX. LOT SIZE: 24437 S.F.
 NUMBER OF LOTS: 42
 SOURCE OF WATER: SALEM WATER USERS ASSOCIATION PWA
 SOURCE OF SEWER: CITY OF BRYANT

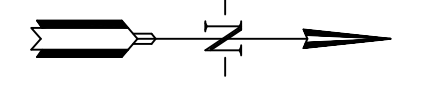
BUILDING SETBACKS:
 FRONT - 20' OR AS SHOWN
 REAR - 20' OR AS SHOWN
 SIDE - 8' OR AS SHOWN

EASEMENTS: UTILITY & DRAINAGE (D.E. & U.E.)
 FRONT - 10' OR AS SHOWN
 BACK - 10' OR AS SHOWN
 SIDE - 5' OR AS SHOWN

STREET RIGHT OF WAYS: 50' OR AS SHOWN
 STREET WIDTH: 28' BOC TO BOC
 LOT CORNERS: SET #4 REBAR WITH CAP

NOTES:

- BURIED UTILITIES ARE LOCATED AT THE SITE. CONTACT ARKANSAS ONE CALL & WHERE APPROPRIATE THE UTILITY COMPANIES PRIOR TO DIGGING.
- ALL UNRESTRAINED WATER LINE FITTINGS SHALL BE INSTALLED WITH A CONCRETE THRUST BLOCK FOR JOINT RESTRAINT.
- WORK ON EXISTING ROADS SHALL INCLUDE WARNING SIGNS & BARRICADES IN ACCORDANCE WITH THE REQUIREMENTS OF THE STATE, COUNTY, OR CITY HAVING JURISDICTION. OTHER SIGNS & DEVICES, SUCH AS PLATING, SHALL BE PLACED AS REQUIRED TO ADEQUATELY PROTECT THE PUBLIC.
- ALL WATER UTILITY WORK SHALL COMPLY WITH SALEM WATER USERS SPECIFICATIONS & DETAILS AND THE ARKANSAS PLUMBING CODE.
- ALL SEWER LINE CONSTRUCTION SHALL COMPLY WITH CITY OF BRYANT STANDARD SPECIFICATIONS & DETAILS AND THE ARKANSAS PLUMBING CODE. FOR A COPY SEE THE WEBSITE: <https://www.cityofbryant.com/DocumentCenter/View/1161/Bryant-Specs-2015-FINAL-Rev?bidId=>
- ALL GRINDER PUMPS AND SEWER SERVICE LINES TO REMAIN PRIVATE.

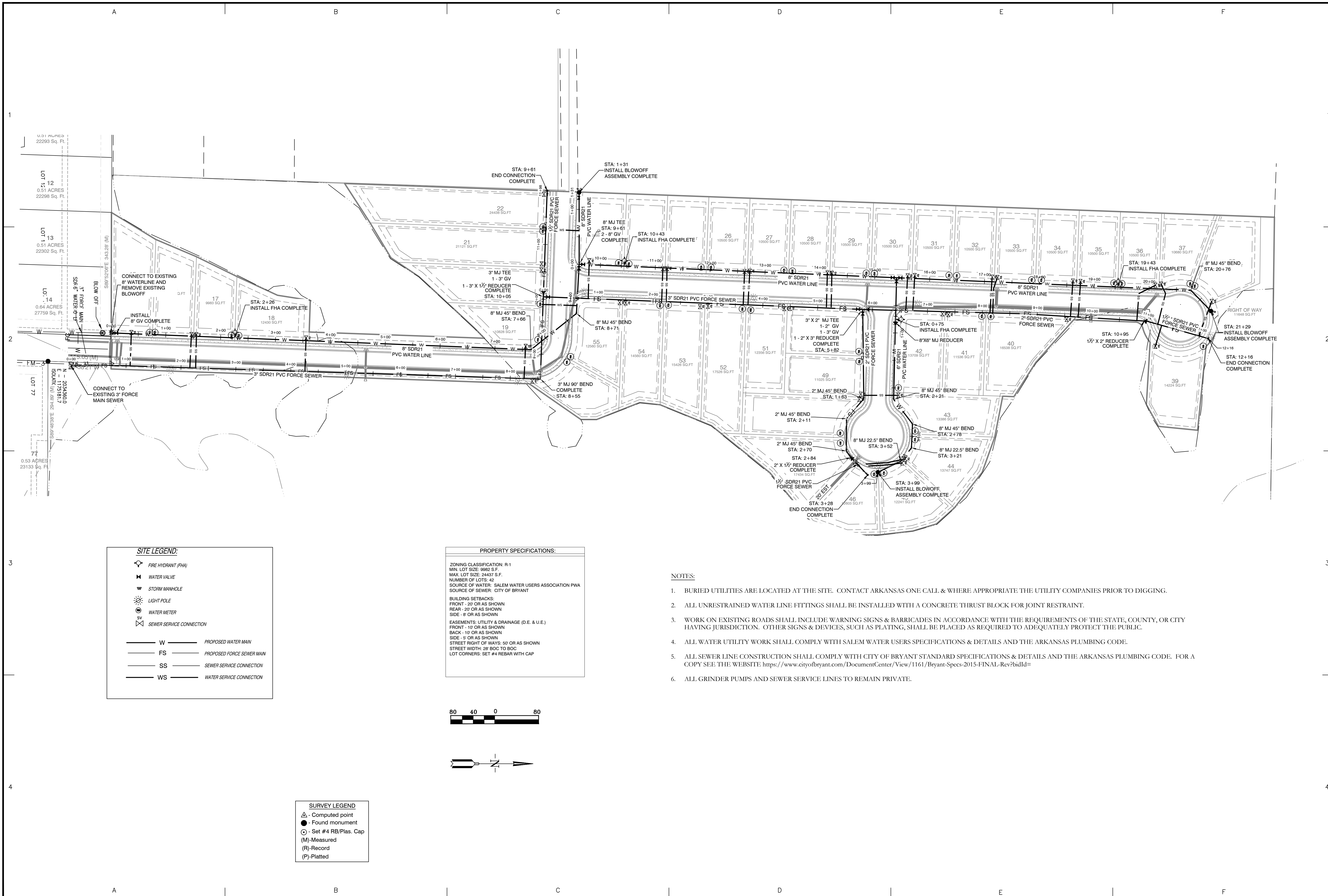


SURVEY LEGEND

	Computed point
	Found monument
	Set #4 RB/Plas. Cap
	Measured
	Record
	Platted

	REVISION	BY	DATE	AS PER CITY OF BRYANT	
1			9/7/22		
GNE Designing our client's success					
GarNat Engineering, LLC					
P.O. Box 116 (72018) Ph (501) 408-4650					
3825 Mt. Carmel Road Fx (888) 900-3068					
Bryant, AR 72022 gnatengineering@gmail.com					
CREEKSIDE ADDITION PHASE 2					
PART OF THE EAST HALF OF THE NORTHWEST QUARTER SECTION 12, T-1-S, R-14-W, SALINE COUNTY, ARKANSAS					
CONTENTS:					
WATER & SEWER UTILITY PLAN					
PROJECT NO: 18054					
DATE: AUGUST 2022					
SHEET NO: 7					

E:\DWG\GarNat\Engineering\18054\18054-SEWER-CONNECTIONS-Phase 2\18054-SEWER-UTILITY-PLAN.dwg



SITE LEGEND:

	FIRE HYDRANT (FHA)
	WATER VALVE
	STORM MANHOLE
	LIGHT POLE
	WATER METER
	SEWER SERVICE CONNECTION
	PROPOSED WATER MAIN
	PROPOSED FORCE SEWER MAIN
	SEWER SERVICE CONNECTION
	WATER SERVICE CONNECTION

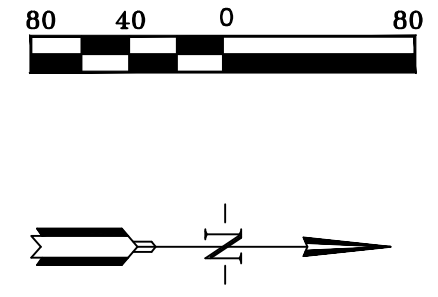
PROPERTY SPECIFICATIONS:

ZONING CLASSIFICATION: R-1
 MIN. LOT SIZE: 9682 S.F.
 MAX. LOT SIZE: 24437 S.F.
 NUMBER OF LOTS: 42
 SOURCE OF WATER: SALEM WATER USERS ASSOCIATION PWA
 SOURCE OF SEWER: CITY OF BRYANT

BUILDING SETBACKS:
 FRONT - 20' OR AS SHOWN
 REAR - 20' OR AS SHOWN
 SIDE - 8' OR AS SHOWN

EASEMENTS: UTILITY & DRAINAGE (D.E. & U.E.)
 FRONT - 10' OR AS SHOWN
 SIDE - 5' OR AS SHOWN
 STREET RIGHT OF WAYS: 50' OR AS SHOWN
 STREET WIDTH: 28' BOC TO BOC
 LOT CORNERS: SET #4 REBAR WITH CAP

- NOTES:**
- BURIED UTILITIES ARE LOCATED AT THE SITE. CONTACT ARKANSAS ONE CALL & WHERE APPROPRIATE THE UTILITY COMPANIES PRIOR TO DIGGING.
 - ALL UNRESTRAINED WATER LINE FITTINGS SHALL BE INSTALLED WITH A CONCRETE THRUST BLOCK FOR JOINT RESTRAINT.
 - WORK ON EXISTING ROADS SHALL INCLUDE WARNING SIGNS & BARRICADES IN ACCORDANCE WITH THE REQUIREMENTS OF THE STATE, COUNTY, OR CITY HAVING JURISDICTION. OTHER SIGNS & DEVICES, SUCH AS PLATING, SHALL BE PLACED AS REQUIRED TO ADEQUATELY PROTECT THE PUBLIC.
 - ALL WATER UTILITY WORK SHALL COMPLY WITH SALEM WATER USERS SPECIFICATIONS & DETAILS AND THE ARKANSAS PLUMBING CODE.
 - ALL SEWER LINE CONSTRUCTION SHALL COMPLY WITH CITY OF BRYANT STANDARD SPECIFICATIONS & DETAILS AND THE ARKANSAS PLUMBING CODE. FOR A COPY SEE THE WEBSITE: <https://www.cityofbryant.com/DocumentCenter/View/1161/Bryant-Specs-2015-FINAL-Rev?bidId=>
 - ALL GRINDER PUMPS AND SEWER SERVICE LINES TO REMAIN PRIVATE.



SURVEY LEGEND

	Computed point
	Found monument
	Set #4 RB/Plas. Cap
	Measured
	Record
	Platted

	REVISION				
BY	AS PER CITY OF BRYANT	DATE	9/7/22	RELOCATED FIRE HYDRANT	MN
BY	RELOCATED FIRE HYDRANT	DATE	9/9/22		MN
GNE Designing our client's success					
GarNat Engineering, LLC					
P.O. Box 116 (72018) Ph (501) 408-4650					
3925 Mt. Carmel Road Fax (888) 900-3068					
Bryant, AR 72022 gnatengineering@gmail.com					
CREEKSIDE ADDITION PHASE 2					
PART OF THE EAST HALF OF THE NORTHWEST QUARTER SECTION 12, T-1-S, R-14-W, SALINE COUNTY, ARKANSAS					
09-09-2022					
CONTENTS:					
WATER & SEWER UTILITY PLAN					
PROJECT NO: 18054					
DATE: AUGUST 2022					
SHEET NO: 7					