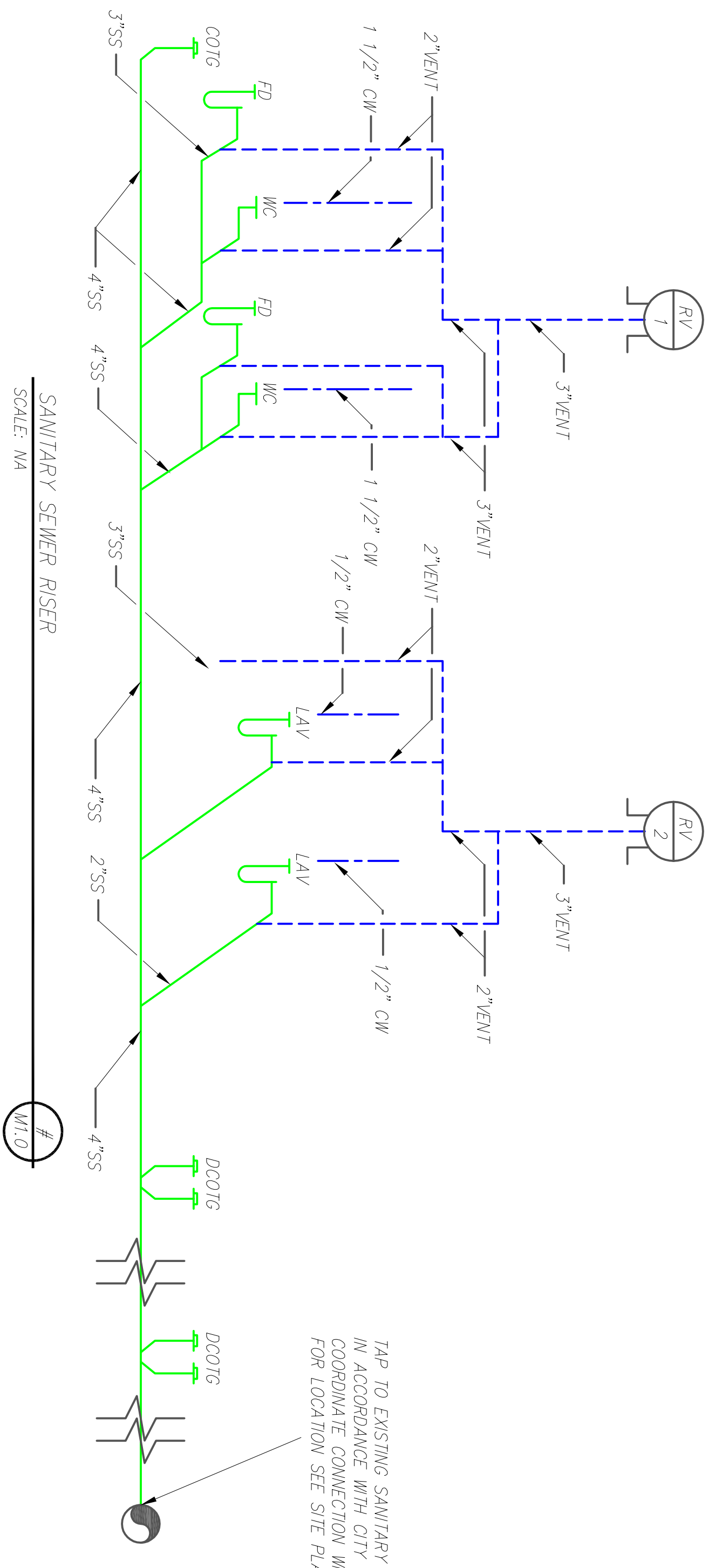


PLUMBING LEGEND	
	DOMESTIC COLD WATER
	SANITARY SEWER
	KEY LINE
	BALL VALVE
	ISOLATION VALVE IN A BARRIED MAINT
	FROST FREE HOSE BIB
	ROOF PEN WITH FLASHING
	FLOOR DRAIN WITH TRAP
	LAVATORY (SEE SPECIFICATION)
	WATER CLOSET (SEE SPECIFICATION)
	ROTATION PAN WITH 2 BRK BENT PAN (REQUIRED BY) SPECIFICATION IN ELECTRICAL CONNECTION
	CLEAN OUT TO GRADE
	DOUBLE CLEAN OUT TO GRADE
	DOMESTIC COLD WATER

- GENERAL PLUMBING NOTES
1. THESE DRAWINGS ARE SCHEMATIC REPRESENTATION OF THE PLUMBING EQUIPMENT REQUIRED AT THIS FACILITY. EXACT MATERIAL SPECIFICATIONS ARE THE RESPONSIBILITY OF THE ELECTRICAL CONTRACTOR.
 2. IT IS THE RESPONSIBILITY OF THE PLUMBING CONTRACTOR TO VISIT THE SITE AND ESTABLISH SITE CONDITIONS BEFORE PROCEEDING AND ON ANY ON-SITE WORK & MATERIALS AS DETERMINED ON THIS DRAWING AND THE PROVIDED SCOPE OF WORK.
 3. THE PLUMBING CONTRACTOR IS TO TAKE STEP TO SCHEDULE ALL EXISTING EQUIPMENT ON-SITE AND REPAIR/REPLACE ANY DAMAGED EQUIPMENT NOT OBTAINED FOR REMOVAL AND ELECTRICAL CONTRACTOR TO COORDINATE INSTALLATION WITH THE GENERAL CONTRACTOR.
 4. THE PLUMBING CONTRACTOR MUST RECEIVE PERMISSION FROM THE ENGINEER OF RECORD BEFORE MAKING ANY PENETRATION OR ATTACHING TO THE BUILDING SYSTEM AND/OR STRUCTURAL STEEL THROUGH MASS AND ROOF SHALL BE SEALED WATER TIGHT AND INSTALLED PER THE ROOF MANUFACTURER'S WARRANTY.
 5. THE PLUMBING CONTRACTOR IS RESPONSIBLE FOR OBTAINING ANY NECESSARY PERMITS, INSPECTIONS, AND ASSOCIATED FEES/CHARGES TO COMPLETE THE ELECTRICAL WORK DERIVED ON THIS DRAWING.
 6. THE ARKANSAS PLUMBING CODE (MOST CURRENT) MUST BE IN ACCORDANCE WITH THE PLUMBING CONTRACTOR IS TO SUPPLY A MATERIAL LIST TO THE ENGINEER OF RECORD BEFORE BEGINNING WORK.
 7. THE PLUMBING CONTRACTOR MUST COMPLY WITH ALL LOCAL CODES & ORDINANCES DERIVED FROM THE CITY OF BRYANT AND NEIGHBORING JURISDICTIONS OF UNDERGROUND UTILITIES PRIOR TO ANY EXCAVATION.

PRELIMINARY
 PARK



APPROVED BY: TITLE: _____ SIGNATURE: _____ DATE: _____	DESIGNED BY: XYZ CHECKED BY: XYZ	REV. DESCRIPTION A ISSUED FOR BIDS BY: JSD DATE: 01/01/20
SCALE: 0" = 2' = 4' GRAPHIC SCALE		
LOCATION: ASHLEY PARK 210 SW 3RD ST BRYANT, ARKANSAS 72022		
DWG. TITLE: ASHLEY PARK BATHROOM PLUMBING PLAN & RISER SCHEMATIC		
REVISION NO./DATE: A - 11/15/19		
PROJECT NO.: SHEET NO.: M1.0		