

VICINITY MAP
SCALE: 1"=2000'

GRADING LEGEND

- PROPOSED CONTOUR (1' INTERVAL)
- - - EXISTING INDEX CONTOUR (5' INTERVAL)
- · · EXISTING CONTOUR (1' INTERVAL)
- - - DRAINAGE DITCH/SWALE

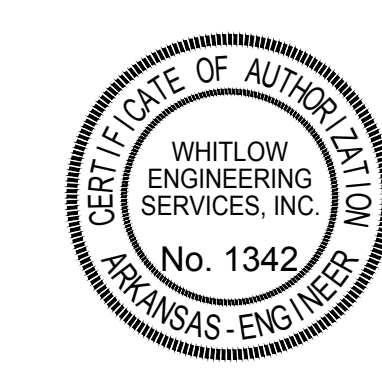
GENERAL NOTES (GRADING)

- 1.) ALL GRADING, FILL, & RELATED EARTHWORK SHALL BE PERFORMED PER GEOTECHNICAL ENGINEER'S RECOMMENDATION.
- 2.) ALL CONSTRUCTION AND MATERIALS TO BE VERIFIED BY A GEOTECHNICAL CONSULTANT PRIOR TO CONSTRUCTION.
- 3.) CONTRACTOR TO NOTIFY ENGINEER IF SIGNIFICANT CHANGES ARE MADE TO GRADING PLAN.
- 4.) SEE SITE PLAN FOR ADDITIONAL INFORMATION.
- 5.) ALL MATERIALS TO BE COMPACTED TO 95% MODIFIED PROCTOR, INSTALLED IN 6"-8" LIFTS, OR AS DIRECTED BY GEOTECHNICAL CONSULTANT.
- 6.) CONTRACTOR SHALL PROVIDE TEMPORARY EROSION CONTROL MEASURES UNTIL CONSTRUCTION IS COMPLETE AND SITE IS STABILIZED.
- 7.) ALL UTILITIES TO BE LOCATED PRIOR TO CONSTRUCTION (ONE CALL, CITY, ETC.).
- 8.) STRAW WATTLES & WIRE BACKED SILT FENCE SEDIMENT BARRIERS TO BE USED ON SLOPES AND AT DISCHARGE STRUCTURE TO PREVENT SEDIMENT FROM LEAVING SITE. SEE EROSION CONTROL PLAN FOR ADDITIONAL INFORMATION.
- 9.) ALL SITE IMPROVEMENTS & AREAS ADJACENT TO PROPERTY ARE EXPECTED TO BE NEW CONSTRUCTION OR REPAIRED TO "AS NEW" CONDITION.
- 10.) SEE CONSTRUCTION DETAILS FOR ADDITIONAL INFORMATION.

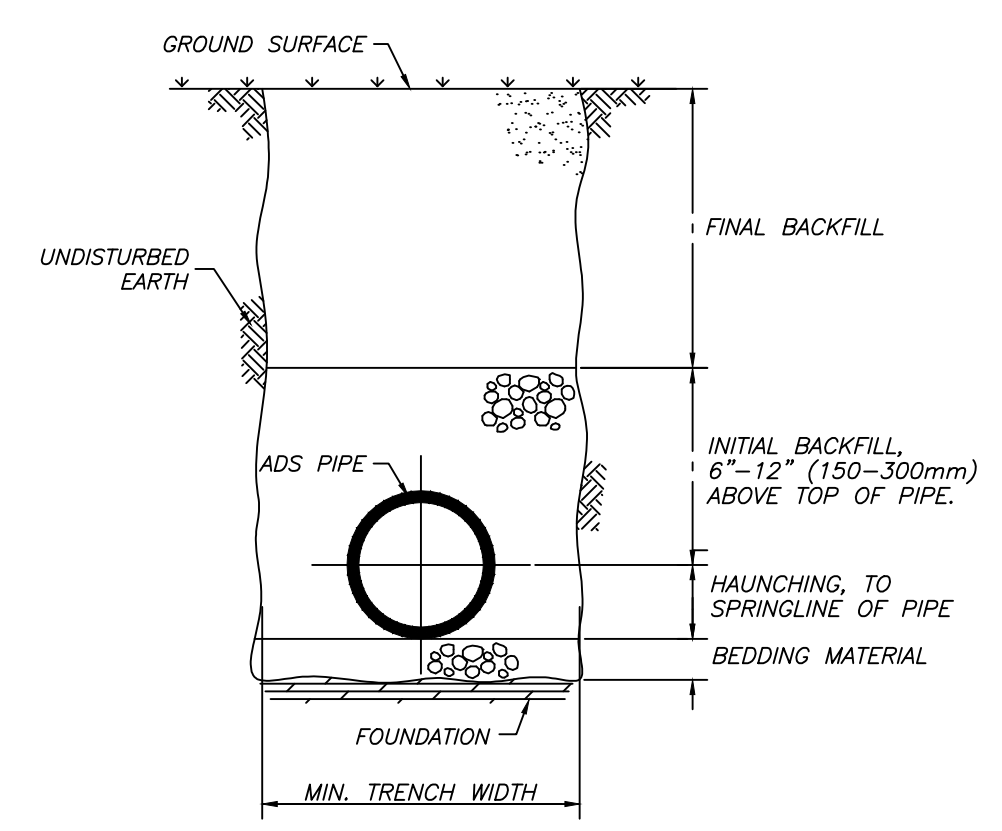
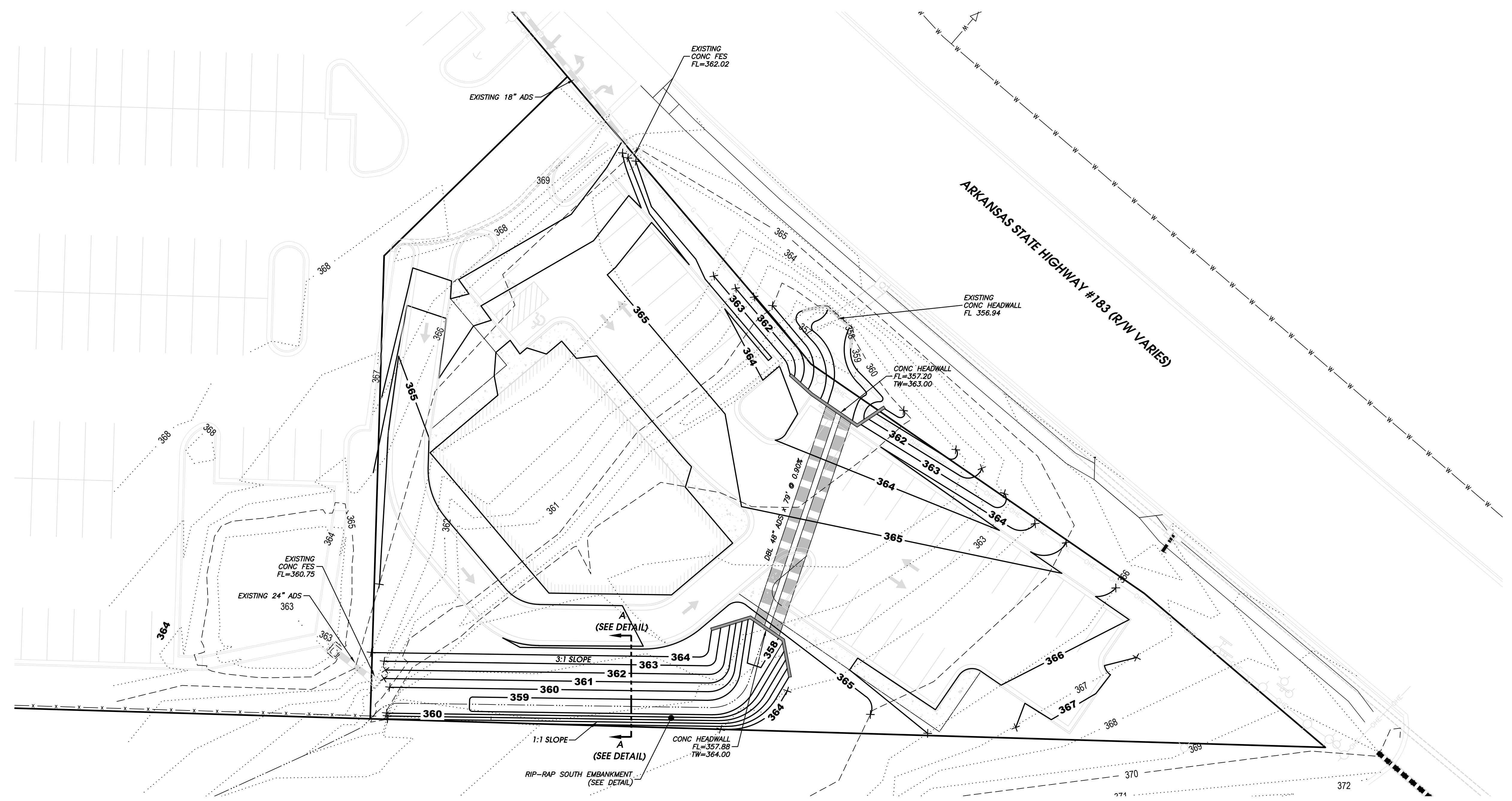
FOR UNDERGROUND UTILITY LOCATIONS CALL: THE ARKANSAS ONE-CALL SYSTEM GIVE 48 HOURS NOTICE BEFORE CONSTRUCTION BEGINS



NOTE: UNDERGROUND FACILITIES, STRUCTURES, AND UTILITIES HAVE BEEN PLOTTED FROM AVAILABLE SURVEYS AND RECORDS. THEIR LOCATIONS MUST BE CONSIDERED APPROXIMATE ONLY. THERE MAY BE OTHERS, THE EXISTENCE AND LOCATIONS OF WHICH ARE UNKNOWN. THE CONTRACTOR MUST VERIFY THE EXACT LOCATIONS OF UTILITIES WITH THE UTILITY COMPANIES PRIOR TO CONSTRUCTION.

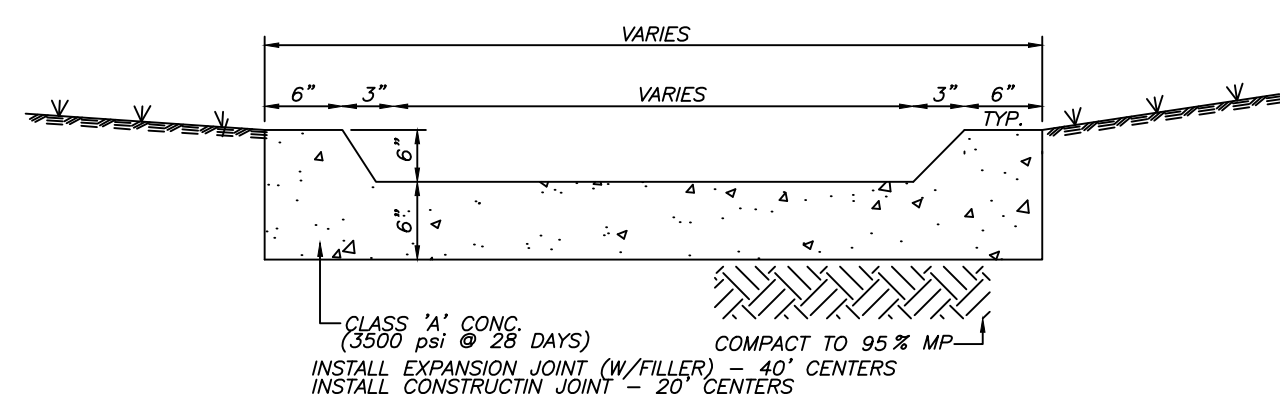


CERTIFICATE OF ENGINEERING ACCURACY
I, ADAM W. WHITLOW, HEREBY CERTIFY THAT THIS PLAN CORRECTLY REPRESENTS A PLAN MADE BY ME, OR UNDER MY SUPERVISION.
DATE: 3/23/2020
ADAM W. WHITLOW, REGISTERED PROFESSIONAL ENGINEER NO. 11431 ARKANSAS

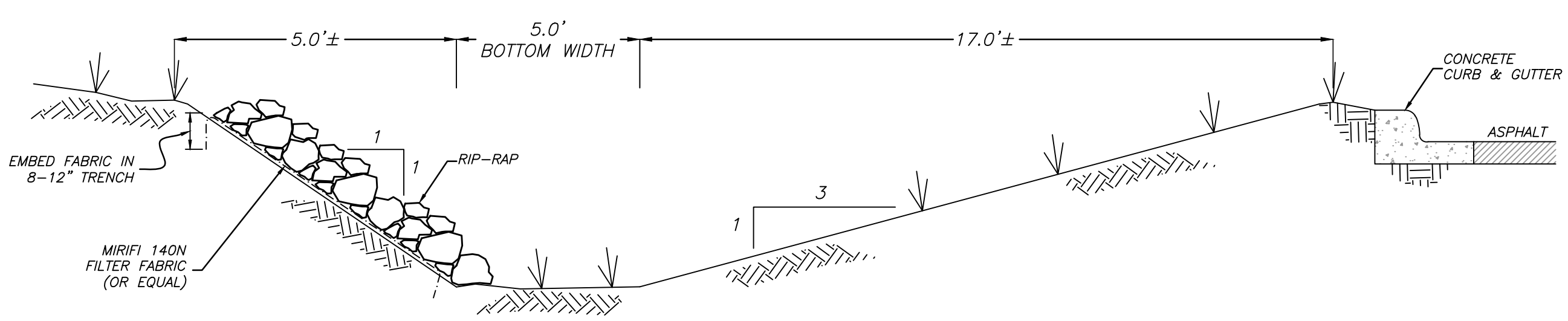


DETAIL - TRENCH X-SECTION
SCALE - NTS

- NOTES:
1. FOUNDATION: WHERE THE TRENCH BOTTOM IS UNSTABLE, THE CONTRACTOR SHALL EXCAVATE TO A DEPTH REQUIRED BY THE ENGINEER AND REPLACE WITH A FOUNDATION OF CLASS I OR II MATERIAL AS DEFINED IN ASTM D2321, "STANDARD PRACTICE FOR INSTALLATION OF THERMOPLASTIC PIPE FOR SEWERS AND OTHER GRAVITY-FLOW APPLICATIONS," LATEST EDITION, AS AN ALTERNATIVE AND AT THE DISCRETION OF THE ENGINEER THE TRENCH BOTTOM MAY BE STABILIZED USING A WOVEN GEOTEXTILE FABRIC.
 2. BEDDING: SUITABLE MATERIAL SHALL BE CLASS I, II OR III AND INSTALLED AS REQUIRED IN ASTM D2321, LATEST EDITION. UNLESS OTHERWISE SPECIFIED BY THE ENGINEER, MINIMUM BEDDING THICKNESS SHALL BE 4" (100mm) FOR 4"-24" (100-600mm) AND 42"-48" (1050-1200mm) CORRUGATED POLYETHYLENE PIPE (CPEP); 6" (150mm) FOR 30"-36" (750-900mm) CPEP.
 3. HAUNCHING AND INITIAL BACKFILL: SUITABLE MATERIAL SHALL BE CLASS I, II OR III AND INSTALLED AS REQUIRED IN ASTM D2321, LATEST EDITION.
 4. UNLESS OTHERWISE SPECIFIED BY THE ENGINEER, MINIMUM TRENCH WIDTHS SHALL BE AS FOLLOWS:
- | NOMINAL PIPE SIZE (in.) | MIN. RECOMMENDED TRENCH WIDTH (in.) |
|-------------------------|-------------------------------------|
| 4 (100) | 21 (530) |
| 6 (150) | 23 (580) |
| 8 (200) | 25 (630) |
| 10 (250) | 28 (710) |
| 12 (300) | 31 (790) |
| 15 (375) | 34 (860) |
| 18 (450) | 39 (990) |
| 24 (600) | 48 (1200) |
| 30 (750) | 66 (1680) |
| 36 (900) | 78 (1980) |
5. MINIMUM COVER: MINIMUM RECOMMENDED DEPTHS OF COVER FOR VARIOUS LIVE LOADING CONDITIONS ARE SUMMARIZED IN THE FOLLOWING TABLE. UNLESS OTHERWISE NOTED, ALL DIMENSIONS ARE TAKEN FROM THE TOP OF PIPE TO THE GROUND SURFACE.
- | SURFACE LIVE LOADING CONDITION | MINIMUM RECOMMENDED COVER (in.) |
|--------------------------------|---------------------------------|
| H25 (FLEXIBLE PAVEMENT) | 12 (300) |
| H25 (RIGID PAVEMENT) | 12 (300) |
| ERO RAILWAY | 24 (610) |
| HEAVY CONSTRUCTION | 48 (1200) |
- * TOP OF PIPE TO BOTTOM OF BITUMINOUS PAVEMENT SURFACE



DETAIL - CURB CUT & CONC. SWALE
SCALE - NTS



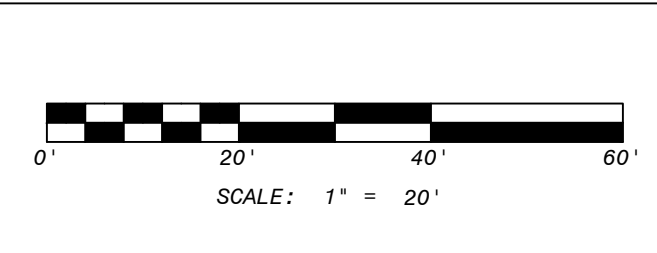
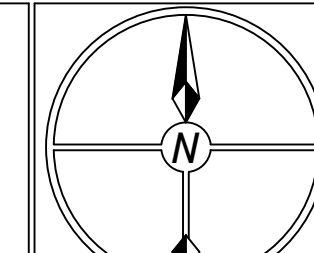
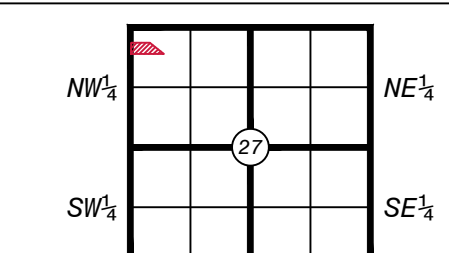
DETAIL - CROSS SECTION 'A-A'
SCALE - NTS



WHITLOW ENGINEERING SERVICES, INC.
301 EAST LINCOLN AVE #2
SEARCY, ARKANSAS 72143
(501) 279-9200 • (501) 279-9205 FAX

Prepared For:
Crescent Commercial
204 W Mulberry Avenue
Searcy, AR 72143
(501) 203-0069

GRADING PLAN
LOT 2 OF 10 FITNESS ADDITION
A Part of the NW 1/4, NW 1/4, Section 27,
City of Bryant, Saline County, Arkansas



No.	Revisions	Date	By	Date:	Project No.
		MARCH 2020			18-007

Drawn By: ANW
Sheet: 2 of 2