



Workshop:

Bryant City Hall Complex

210 SW 3rd Street

Watch Live: <https://www.youtube.com/c/BryantArkansas>

Date: August 21, 2023 - **Time:** 6:00 PM

Invocation

Pledge of Allegiance

Call to Order

Public Comments

Old Business

New Business

Parks and Recreation

1. Discussion of New A&P Option

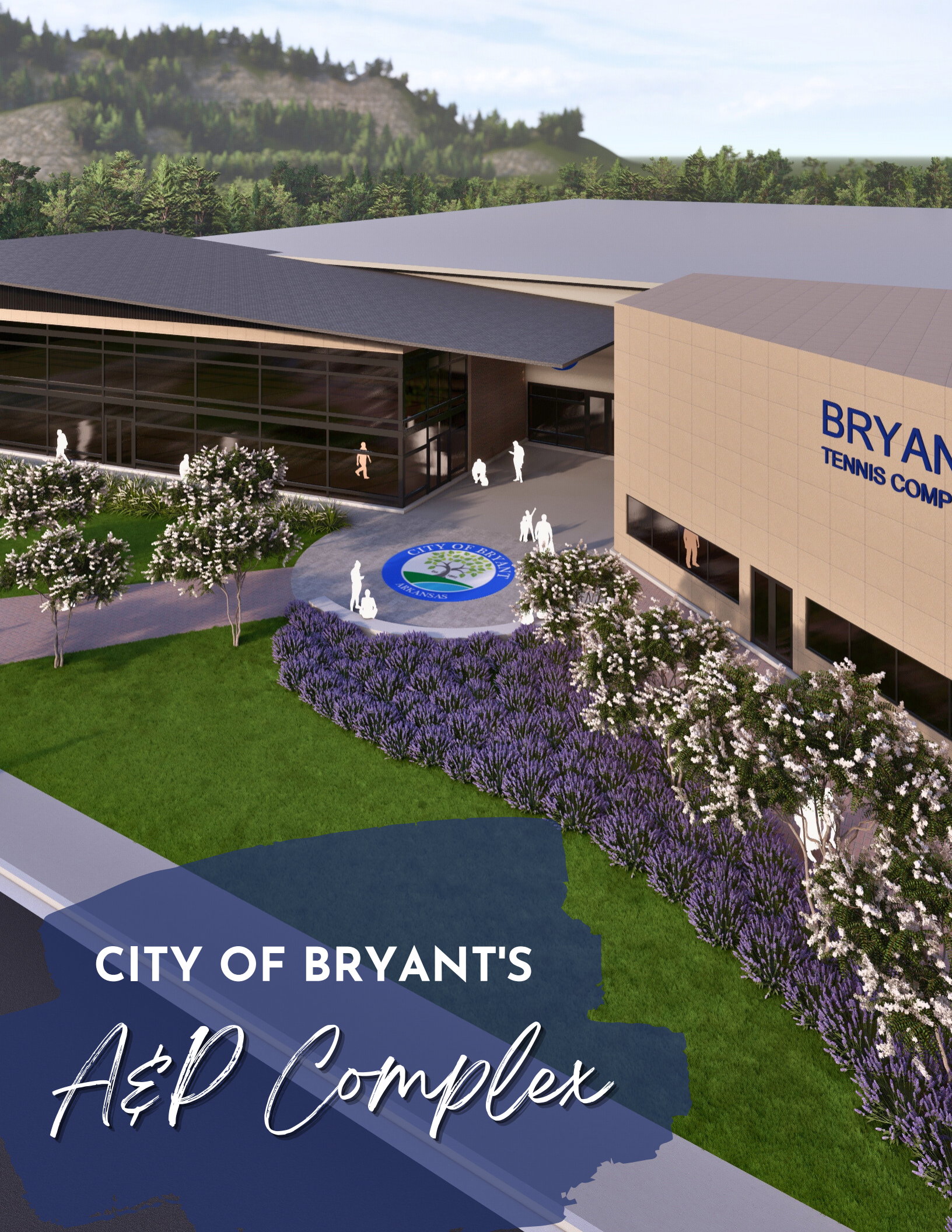
This proposal makes a much-needed investment in our parks and by bonding A&P funds to build a top-notch indoor tennis/pickleball facility will:

- 1. Provide a premier home to Bryant Hornets Tennis Team*
- 2. Broaden the economic impact of sports tourism in Bryant*
- 3. Accomplish one of the major projects proposed in the Parks master plan*
- 4. Give the voters a concrete vision of what they are voting for in November*

- [AP Complex Proposal.pdf](#)

Council Comments

Mayor Comments



CITY OF BRYANT'S

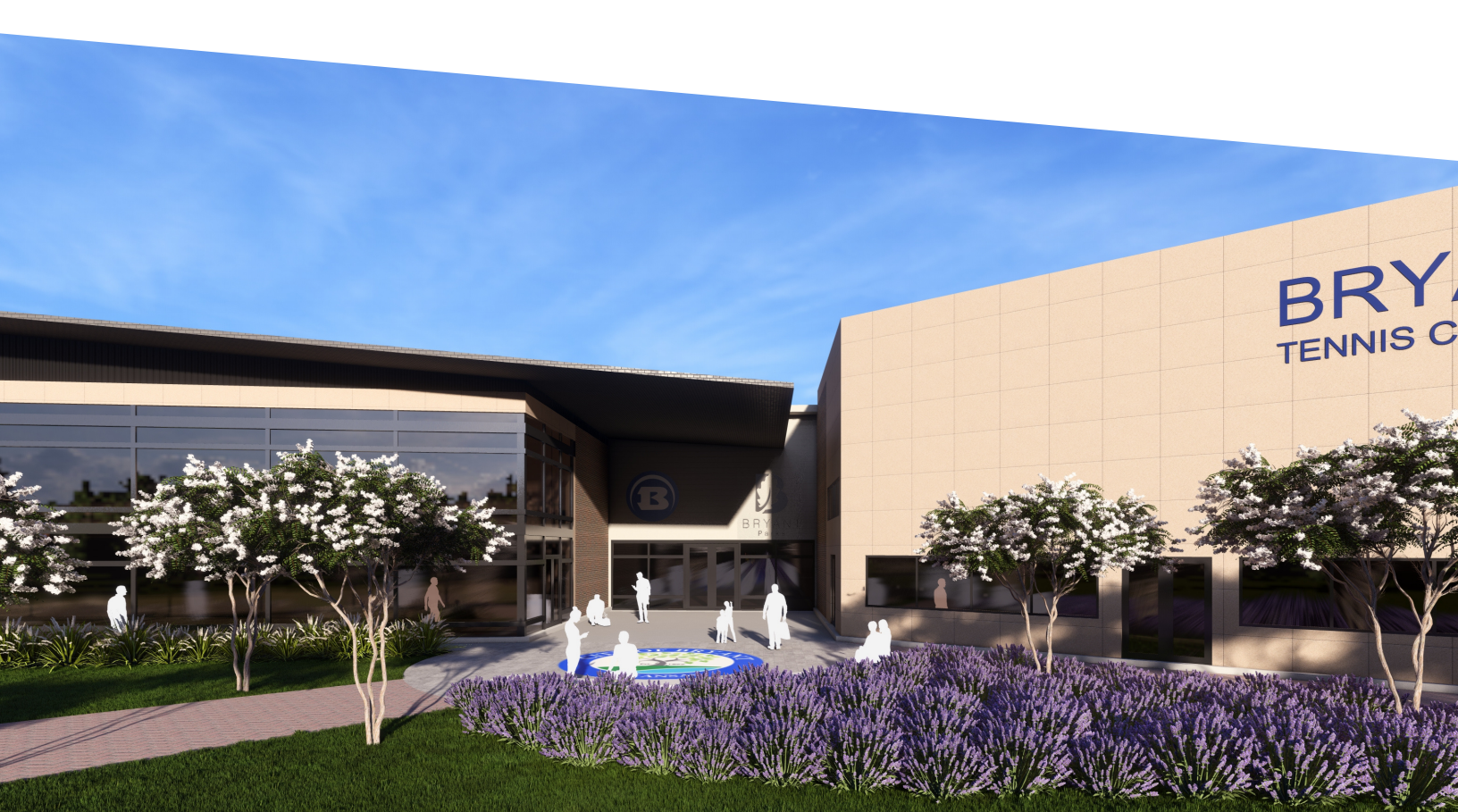
A&P Complex



The Proposal

After careful brainstorming and discussion, we have come up with a solution that benefits all parties. This solution includes a 50/50 A&P split between the Parks department and the future A&P Commission, bonding a bulk of their percentage to building an A&P Facility. Why?

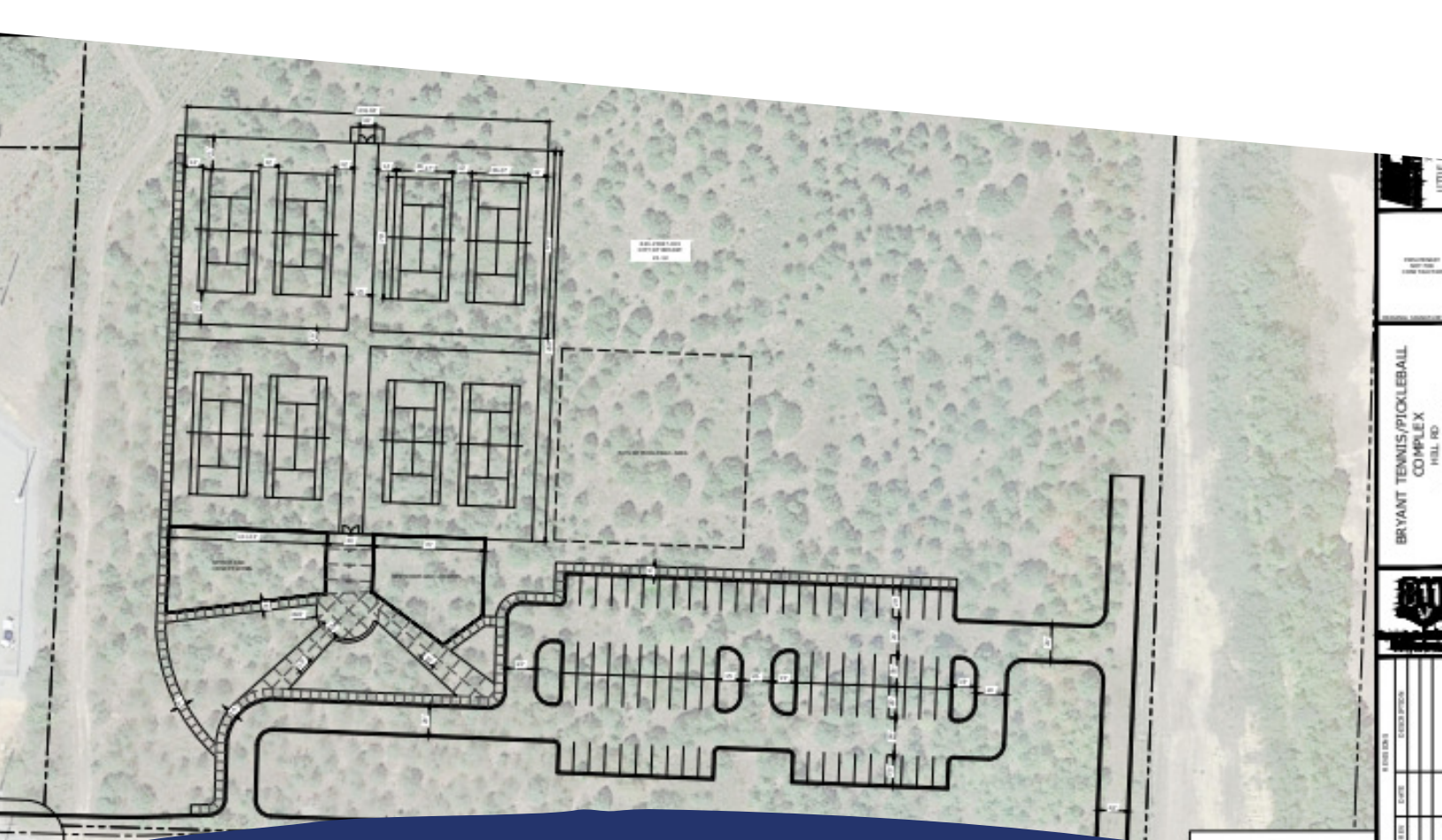
- **This satisfies the Council's desire to give the A&P Commission enough funding to bring visitors and events to Bryant that show off our great community.**
- **It satisfies the Parks advocates by making a significant investment in our current Parks system and builds one of the foundational pieces of the master plan.**
- **It gives voters the assurance that the future A&P Commission will deliver on promises to the voters.**



Tennis/Pickleball Complex

Why is the Tennis/Pickleball complex the right project in the master plan to bond right now?

- It gives the A&P the best chance of passing with the school district, business community, and Parks advocates mobilized.
- It leans into our already strong sports tourism economy. We already have an experienced team of professionals and systems in place to maximize the economic impact of the facility.
- The flexibility of this complex allows it to serve more than just sports tourism.
- Its location on the Parkway will anchor future economic development opportunities that will further grow the sales tax base.



The Conceptual Drawing

Crafted by McClelland Consulting Engineers, this concept includes a generous-sized parking lot, a restroom and locker room, an office and concessions area, a future pickleball area, and 8 courts.

